



Community Weekly Update for February 2-February 8, 2013

A Love Note from Me to You...

Dear Neighbors,

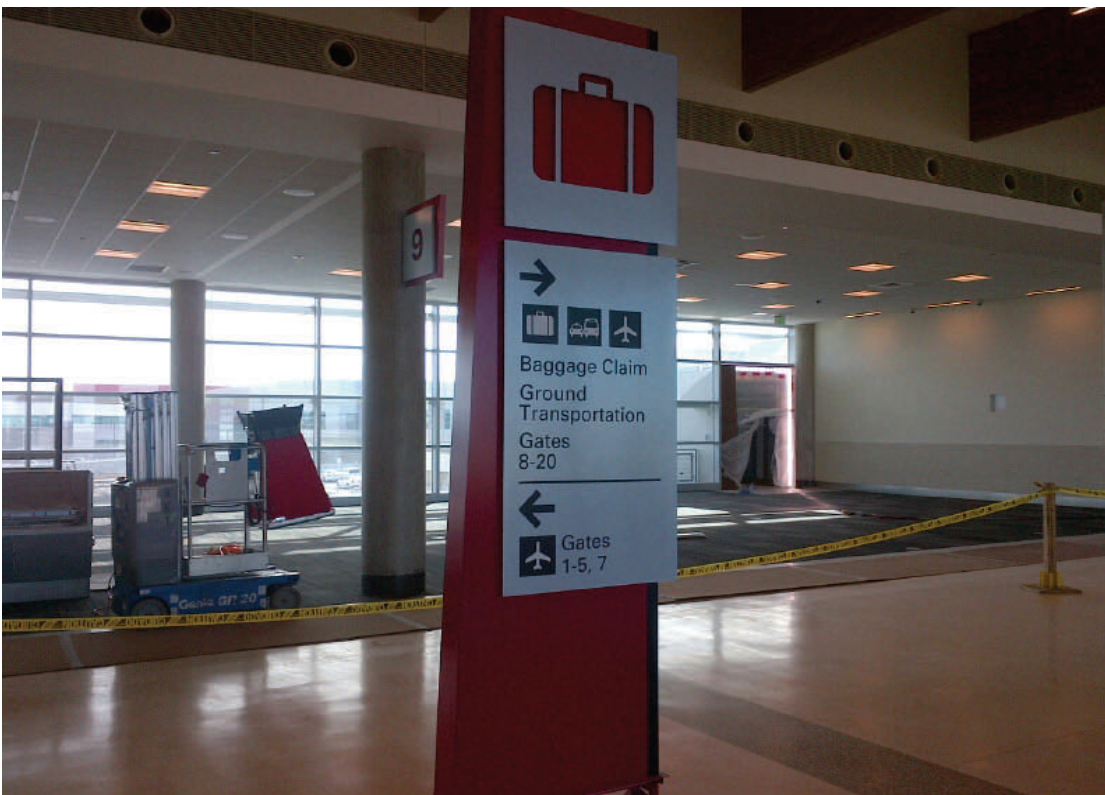
The Dallas Stars will have one home game this week on Friday February 8th. The Dallas Mavericks will also have one home game this week on Wednesday February 6th. Please be advised that there could be an increase in general aviation traffic due to these games.

We are excited about the progress and changes that are taking place here at Dallas Love Field and we want you to be excited as well! If you are interested in some area that we are currently monitoring for our quarterly meetings of the LFEAC or if you have some particular interest in a time frame to be monitored, please let me know and I will try to accommodate that suggestion.

-Ms. Courtenay Shorter

Contents

Construction Updates	Pg.2
Runway Closures	Pg.2
Airport Diagram	Pg.3
Airport Operations Report	Pg.4 & 5



It's a Sign of Love! Informational signage is placed throughout the new concourse to help guide passengers through the airport as smoothly as possible.

For more information and updates about the Love Field Modernization Project (LFMP) please visit: <http://www.lovefieldmodernizationprogram.com/>

Want to get involved?

The Love Field Environmental Advisory Council (LFEAC) meets once every quarter. Please join us for round-table discussion and updates!!!

Upcoming LFEAC Meetings:

- ◆ April 11, 2013
- ◆ July 11, 2013
- ◆ October 10, 2013

Everyday Environmental Tip

When at work, skip printing out your emails or any other documents unless you really need to. If you must print your documents, be sure to recycle them afterwards.



Construction Activities

Runway Safety Area (RSA)

In order to meet current FAA requirements, modifications to RWY 13L/31R must be made to have the appropriate amount of safety area (1,000 feet) at the north end of the runway. In order for the Runway Safety Area (RSA) Project to begin construction, it is necessary for construction elements to be completed on Taxiway Bravo to allow the Love Field Modernization Program (LFMP) to remain on schedule.

As of December 21, 2012, Taxiway Bravo has been reopened.

The RSA project is currently scheduled to begin in February 2013. Once the project has begun, there is an expected closure of RWY 13L/31R (Lemmon) for approximately 60 to 90 days beginning tentatively late February 2013.

If you would like to learn more about the LFMP please visit:

http://www.dallas-lovefield.com/pdf/LFMP_Newsletter_0412.pdf



Water Main Replacement

DWU has contracted with Atkins Brothers Construction to install a 48" water line around Love Field from the Shorecrest Weiss Street intersection to approximately the 8000 block of Lemmon Avenue. Shorecrest is currently closed from Webb Chapel Road to Lemmon Avenue as construction continues. Work continues on the eastbound side of Lemmon Ave from the intersection at Shorecrest to Lovers Lane. All work will be completed in phases. Estimated completion for the project is Spring 2013.

Runway Closures

Scheduled Runway Closures for Routine Maintenance

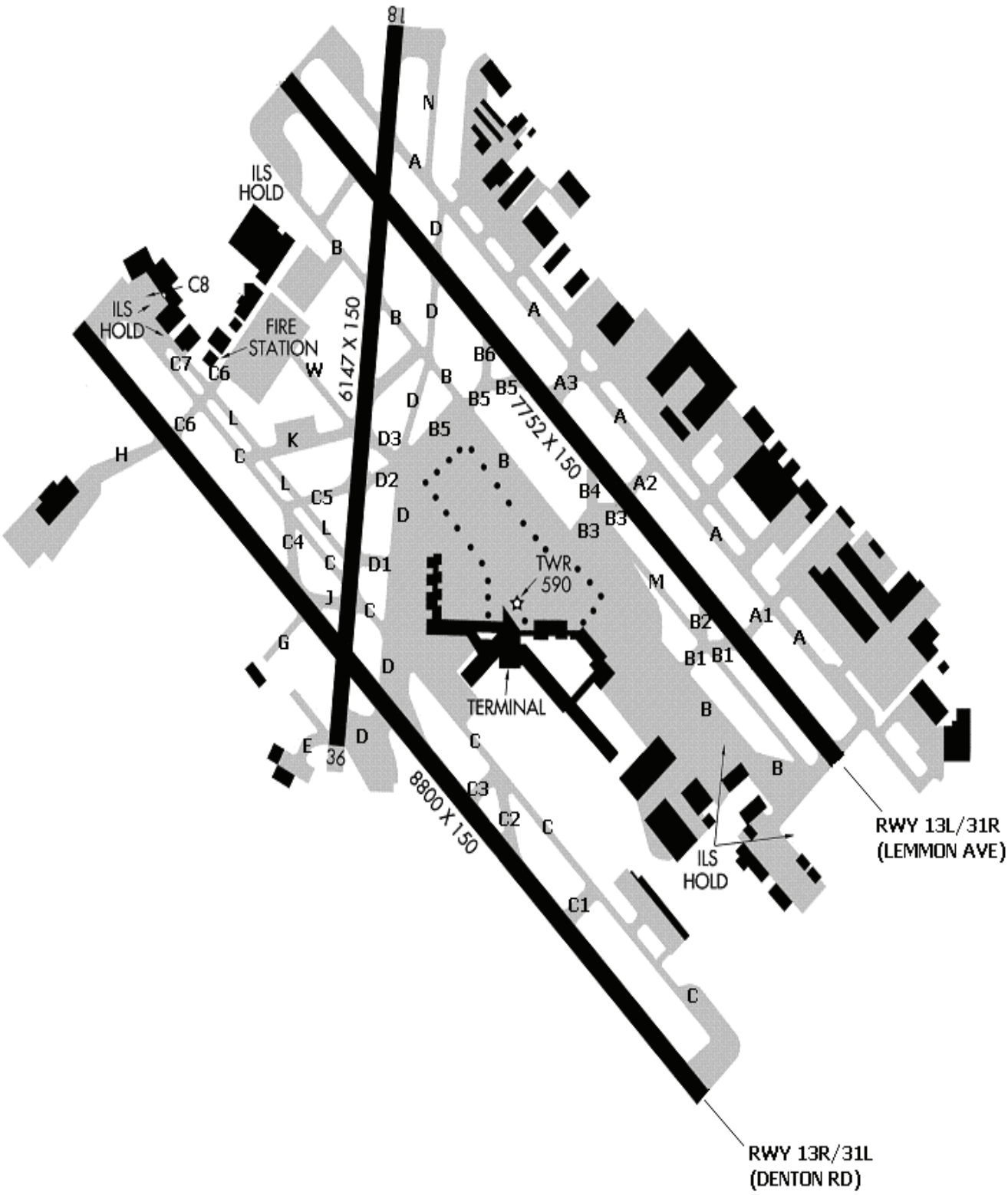
Runway 13L/31R (Lemmon) will be closed Saturday February 2, 2013 from 8:00AM until 5:00PM.



Ongoing Airfield Closures

- ◆ RWY 18/36 to remain closed, but will be available for taxiing.
- ◆ TWY A3 will be closed Saturday February 2, 2013 from 8:00AM until 5:00PM.
- ◆ TWYS B5, B6, B (between TWY D and TWY B3) are expected to be closed on Sunday January 27, 2013 from 8:00AM until 5:00PM.
- ◆ TWY B expected to be closed nightly from TWY B3 to TWY D, from 10:00pm until 5:00am until January 27, 2013. This closure may include TWY B up to TWY R.
- ◆ TWY C4 will be closed Saturday February 2, 2013 from 8:00 until 5:00 PM
- ◆ TWY M will remain closed for construction.

Airport Diagram



Airport Operations Report

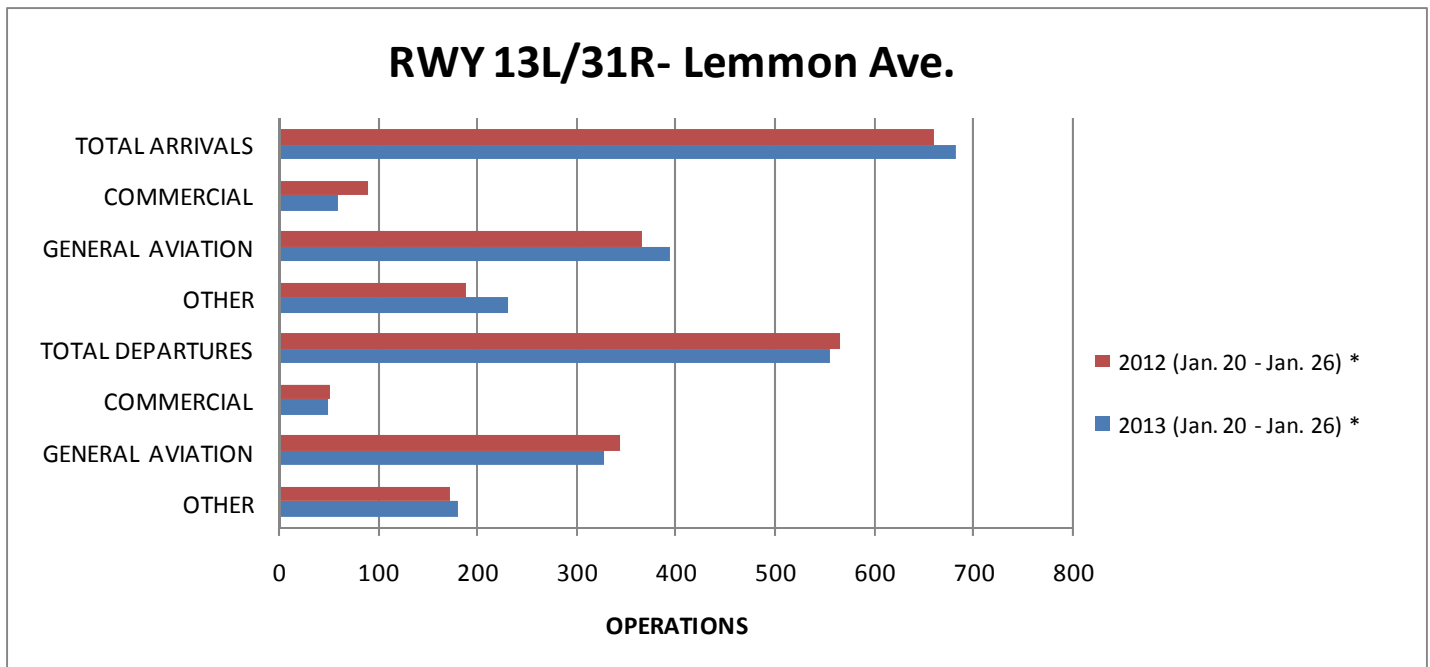
Total Operations for the Week of January 20– January 26, 2013

13L / 31R (Lemmon)

13R / 31L (Denton)

Jan. 20–Jan. 26	Total	Avg per Day		Total	Avg per Day
Arrivals	683	98		Arrivals	963
Commercial	59	8		Commercial	779
GA	394	56		GA	128
Other	230	33		Other	56
Departures	556	79		Departures	889
Commercial	48	7		Commercial	723
GA	328	47		GA	115
Other	180	26		Other	51

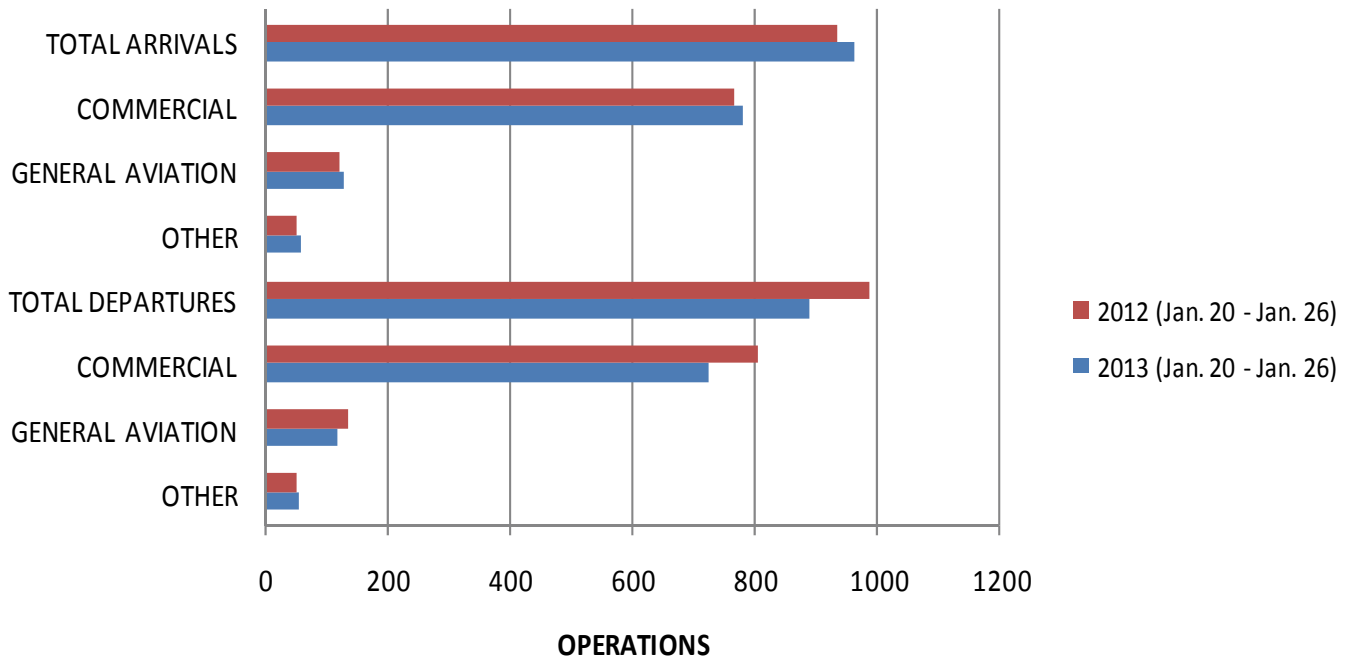
Annual Comparison



- ◆ RWY 13L/31R (Lemmon) was closed Friday January 20, 2012 at 10:00PM until Saturday January 21, 2012 at 2:00PM.
- ◆ RWY 13L/31R (Lemmon) was closed Sunday January 22, 2012 at 10:00PM until Monday January 23, 2012 at 4:00AM.
- ◆ RWY 13L/31R (Lemmon) was closed Monday January 23, 2012 at 10:00PM until Tuesday January 24, 2012 at 4:00AM.
- ◆ RWY 13L/31R (Lemmon) was closed Tuesday January 24, 2012 at 10:00PM until Wednesday January 25, 2012 at 4:00AM.
- ◆ RWY 13L/31R (Lemmon) was closed Wednesday January 25, 2012 at 10:00PM until Thursday January 26, 2012 at 4:00AM.
- ◆ RWY 13L/31R (Lemmon) was closed Thursday January 26, 2012 at 10:00PM until Friday January 27, 2012 at 4:00AM.
- ◆ RWY 13L/31R (Lemmon) was closed Monday January 21, 2013 from 8:00AM until 1:00PM.

Airport Operations Report (Continued)

RWY 13R/31L- Denton Rd.



**Community Weekly Update
February 2- February 8, 2013**

Visit us at
www.dallas-lovefield.com/



For questions or concerns please
contact:

Courtenay Shorter
Aircraft Noise Coordinator
City of Dallas-Department of
Aviation
Phone: 214-670-6673

