



Community Weekly Update for February 9-February 15, 2013

A Love Note from Me to You...

Dear Neighbors,

The Dallas Mavericks will have three home games this week on Saturday February 9th, Monday February 11th, and Wednesday February 13th. The Dallas Stars will have one home game this week on Friday February 8th. Please be advised that there could be an increase in general aviation traffic due to these games.

There is also a chance of thunderstorms in the forecast for the weekend. Please be advised that this could cause later than normal or increased air traffic due to delays or diversions.

We are excited about the progress and changes that are taking place here at Dallas Love Field and we want you to be excited as well! If you are interested in some area that we are currently monitoring for our quarterly meetings of the LFEAC or if you have some particular interest in a time frame to be monitored, please let me know and I will try to accommodate that suggestion.

-Ms. Courtenay Shorter

Contents	
Construction Updates	Pg.2
Runway Closures	Pg.2
Airport Diagram	Pg.3
Airport Operations Report	Pg.4 & 5

Want to get involved?

The Love Field Environmental Advisory Council (LFEAC) meets once every quarter. Please join us for round-table discussion and updates!!!

Upcoming LFEAC Meetings:

- ◆ April 11, 2013
- ◆ July 11, 2013
- ◆ October 10, 2013



View from diamond concession area into the east wing of the new concourse for gates 1-10.

For more information and updates about the Love Field Modernization Project (LFMP) please visit: <http://www.lovefieldmodernizationprogram.com/>

Everyday Environmental Tip

Looking for the perfect gift for your Valentine? Have a green Valentine's Day this year and try shopping at the local farmer's market. Start with the beautiful array of locally-grown flowers and artisan candy/chocolates. Then purchase locally grown fresh ingredients for a nice dinner at home. Visit www.dallasfarmersmarket.org to plan your celebration with love.



Construction Activities

Runway Safety Area (RSA)

In order to meet current FAA requirements, modifications to RWY 13L/31R must be made to have the appropriate amount of safety area (1,000 feet) at the north end of the runway.

As of December 21, 2012, Taxiway Bravo has been re-opened and the RSA project is scheduled to begin February 11, 2013.

To complete the modifications needed all work will be done in phases. Phase 1 of the project requires a closure of RWY 13L/31R (Lemmon) for approximately 60 days beginning February 18, 2013 followed by a 120 day period of over-night closures as needed.

If you would like to learn more about the LFMP please visit:

http://www.dallas-lovefield.com/pdf/LFMP_Newsletter_0412.pdf



Water Main Replacement

DWU has contracted with Atkins Brothers Construction to install a 48" water line around Love Field from the Shorecrest Weiss Street intersection to approximately the 8000 block of Lemmon Avenue. Shorecrest is currently closed from Webb Chapel Road to Lemmon Avenue as construction continues. Work continues on the eastbound side of Lemmon Ave from the intersection at Shorecrest to Lovers Lane. All work will be completed in phases. Estimated completion for the project is Spring 2013.

Runway Closures

Scheduled Runway Closures for Routine Maintenance

Runway 13R/31L (Denton) will be closed Saturday February 9, 2013 from 6:00AM until 5:00PM

Runway 13L/31R (Lemmon) will be closed Sunday February 10, 2013 from 7:00AM until 2:00PM.

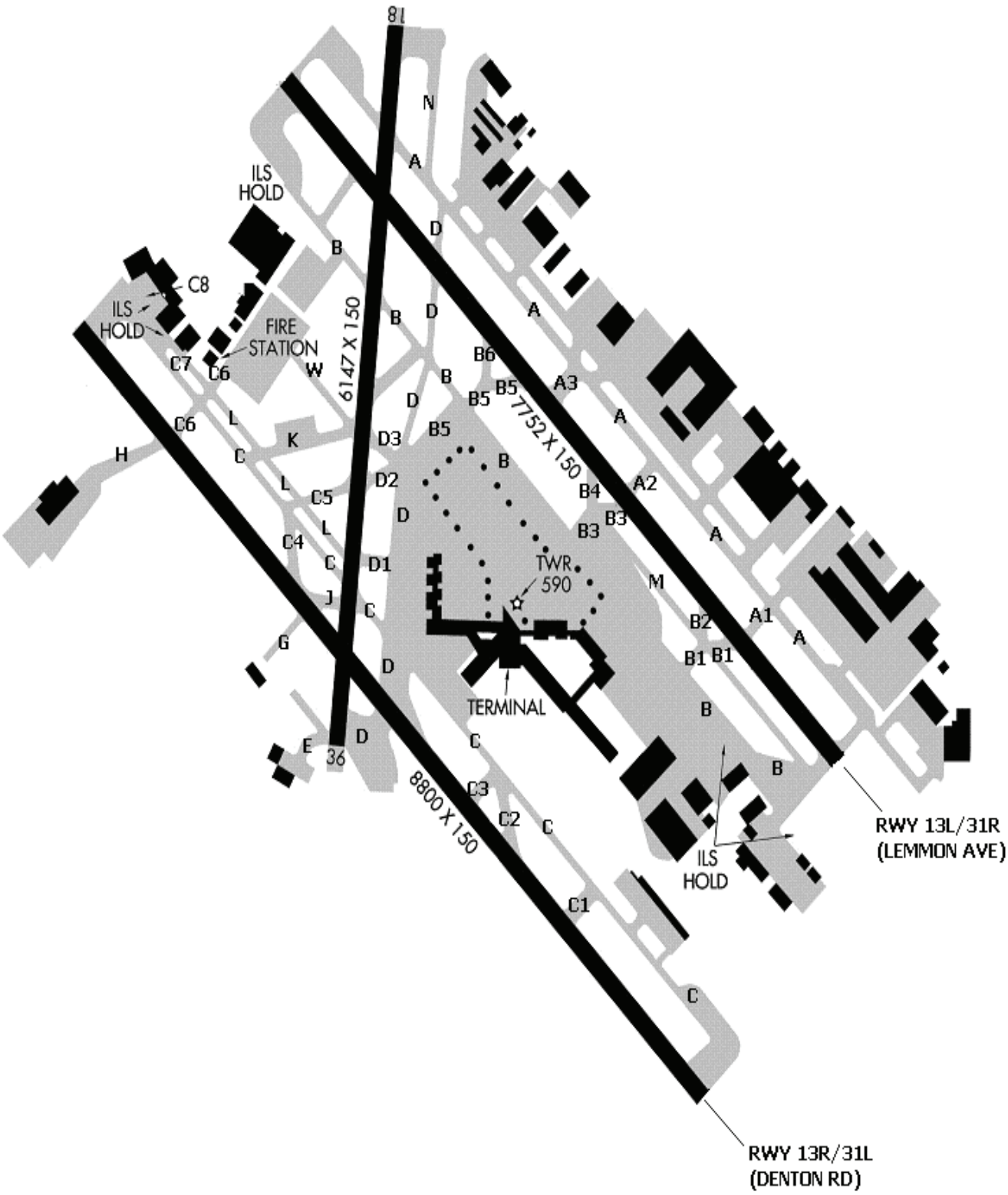


Ongoing Airfield Closures

- ◆ RWY 18/36 to remain closed, but will be available for taxiing.
- ◆ TWYS B (between TWY D and TWY B3), B5 and B6 are expected to be closed on Sunday February 10, 2013 from 7:00AM until 2:00PM.
- ◆ TWY M will remain closed for construction.

****Please see the airport diagram on the next page for the locations of runways and taxiways.***

Airport Diagram



Airport Operations Report

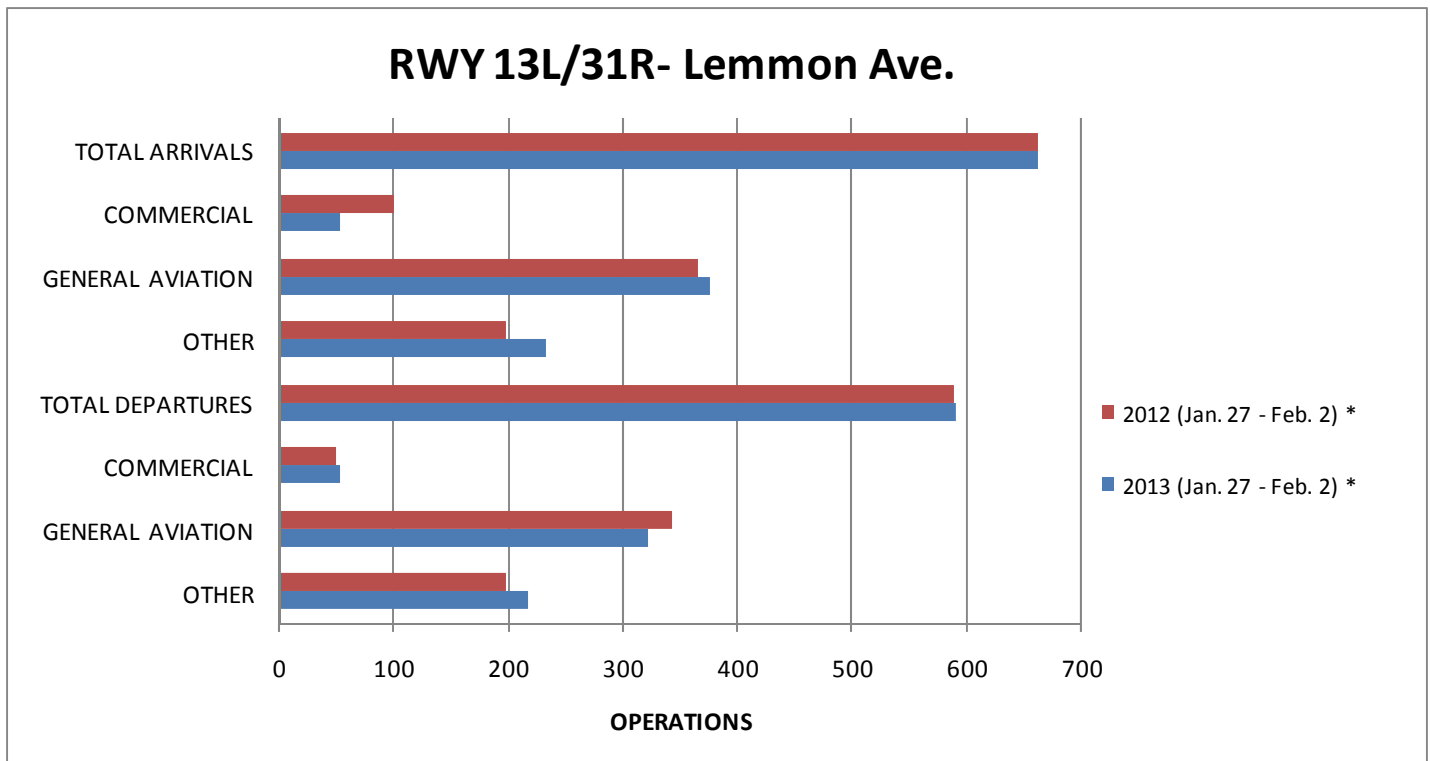
Total Operations for the Week of January 27– February 2, 2013

13L / 31R (Lemmon)

13R / 31L (Denton)

Jan. 27–Feb. 2	Total	Avg per Day		Total	Avg per Day
Arrivals	661	94	Arrivals	968	141
Commercial	53	8	Commercial	777	111
GA	376	54	GA	144	21
Other	232	33	Other	65	9
Departures	590	84	Departures	864	123
Commercial	52	7	Commercial	660	94
GA	321	46	GA	143	20
Other	217	31	Other	61	9

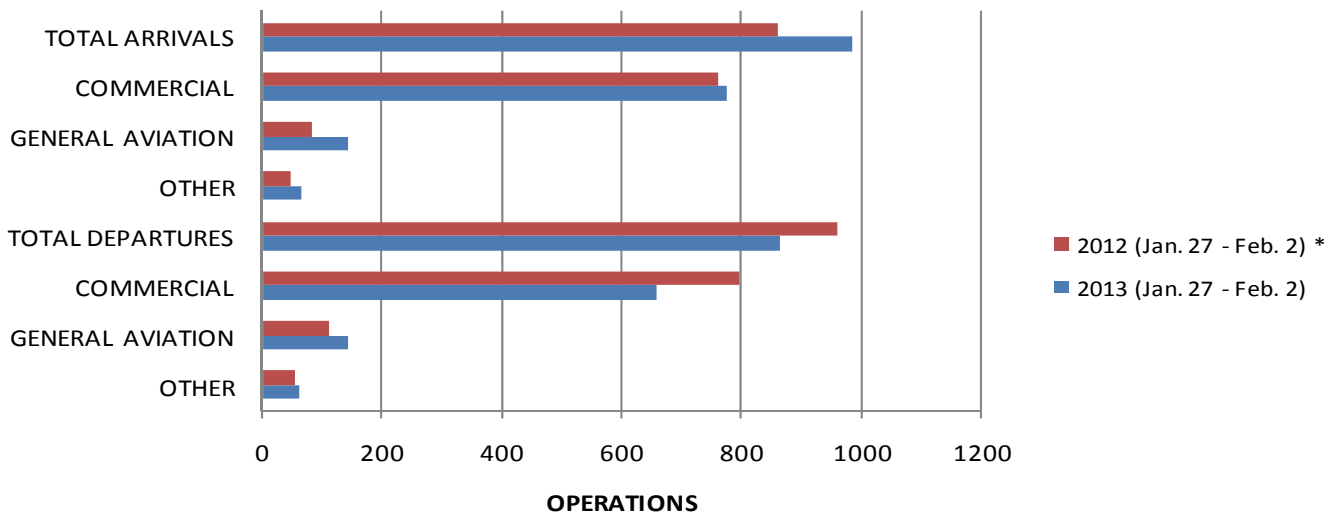
Annual Comparison



- ◆ RWY 13L/31R (Lemmon) was closed Friday January 27, 2012 at 10:00PM until Saturday January 28, 2012 at 1:00PM.
- ◆ RWY 13L/31R (Lemmon) was closed Saturday January 28, 2012 at 7:00AM until 3:00PM.
- ◆ RWY 13L/31R (Lemmon) was closed Saturday February 2, 2013 from 8:00AM until 5:00PM.

Airport Operations Report (Continued)

RWY 13R/31L- Denton Rd.



- ◆ RWY 13R/31L (Denton) was closed Sunday January 29, 2012 at 10:00PM until Monday January 30, 2012 at 4:00AM.
- ◆ RWY 13R/31L (Denton) was closed Monday January 30, 2012 at 10:00PM until Tuesday January 31, 2012 at 4:00AM.
- ◆ RWY 13R/31L (Denton) was closed Tuesday January 31, 2012 at 10:00PM until Wednesday February 1, 2012 at 4:00AM.
- ◆ RWY 13R/31L (Denton) was closed Wednesday February 1, 2012 at 10:00PM until Thursday February 2, 2012 at 4:00AM.
- ◆ RWY 13R/31L (Denton) was closed Thursday February 2, 2012 at 10:00PM until Friday February 3, 2012 at 4:00AM.

Community Weekly Update February 9- February 15, 2013

Visit us at
www.dallas-lovefield.com/



For questions or concerns please
contact:

Courtenay Shorter
Aircraft Noise Coordinator
City of Dallas-Department of
Aviation
Phone: 214-670-6673

