



**Community
Weekly Update
for
June 15 -
June 21, 2013**

Message from the Director:

Since the beginning of the weekly newsletter in 2011, the Department of Aviation has endeavored to keep all of our neighbors as informed as possible to developments on and around Dallas Love Field, part of this information, specifically the runway usage was derived from software systems the airport uses for a number of tasks. Regrettably, the Department experienced issues with this system, and was unable to provide the information we previously included in the weekly update. Those issues have been resolved and as you may have noticed in last week's update we are again reporting runway usage.

Over the next week, we will post the usage from the past few months. As always, the City attempts to provide you with the most up to date information and remains committed to be the best neighbor we can be.

We do realize that as we continue with improvements, including the opening of the new terminal gates, there will be shifts in runway usage and that these shifts will result in changes to the number of aircraft that use either of our two active runways. Until the construction is complete we do not know for certain what the ultimate activity will be. The airport is maintaining an open dialogue with all of our users as well as the FAA to make them aware that their actions do have impact on our neighbors.

The Department of Aviation strives diligently to gain compliance with our voluntary noise control program, and will continue to do so. Thank you for your patience and for your continued participation in helping make Dallas Love Field better.

-Mark Duebner

A Love Note from Me to You...

Dear Neighbors,

We are excited about the progress and changes that are taking place here at Dallas Love Field and we want you to be excited as well! If you are interested in some area that we are currently monitoring for our quarterly meetings of the LFEAC or if you have some particular interest in a time frame to be monitored, please let me know and I will try to accommodate that suggestion.

-Ms. Courtenay Shorter

Contents

Construction Updates	Pg.2
Runway Closures	Pg.2
Airport Diagram	Pg.3
Airport Operations Report	Pg.4 & 5

Want to get involved?

The Love Field Environmental Advisory Council (LFEAC) meets once every quarter. Please join us for round-table discussion and updates!!!

Upcoming LFEAC Meetings:

- ♦ **July 11, 2013**
- ♦ *October 10, 2013*
- ♦ *January 9, 2014*

Construction Activities

Runway Safety Area (RSA)

The Runway Safety Area (RSA) project has now been completed.

Work continues on taxiways A, B, and D. As work continues along these taxiways, there will be some limitations on the access to the approach ends of RWY 13L/31R (Lemmon).

Taxiway D between Taxiway C and Taxiway P was closed Tuesday May 28, 2013 as work continues for the next phase of the Love Field Modernization Project (LFMP).

This phase of the project is expected to be completed in Spring of 2014 and it includes the demolition of Gates 4 through 15 of the west concourse and the baggage claim wing.

If you would like to learn more about the LFMP please visit:



http://www.dallas-lovefield.com/pdf/LFMP_Newsletter_0412.pdf

Runway Closures

Scheduled Runway Closures for Routine Maintenance

RWY 13L/31R will be closed Saturday June 15, 2013 from 6:00am to 2:00pm.



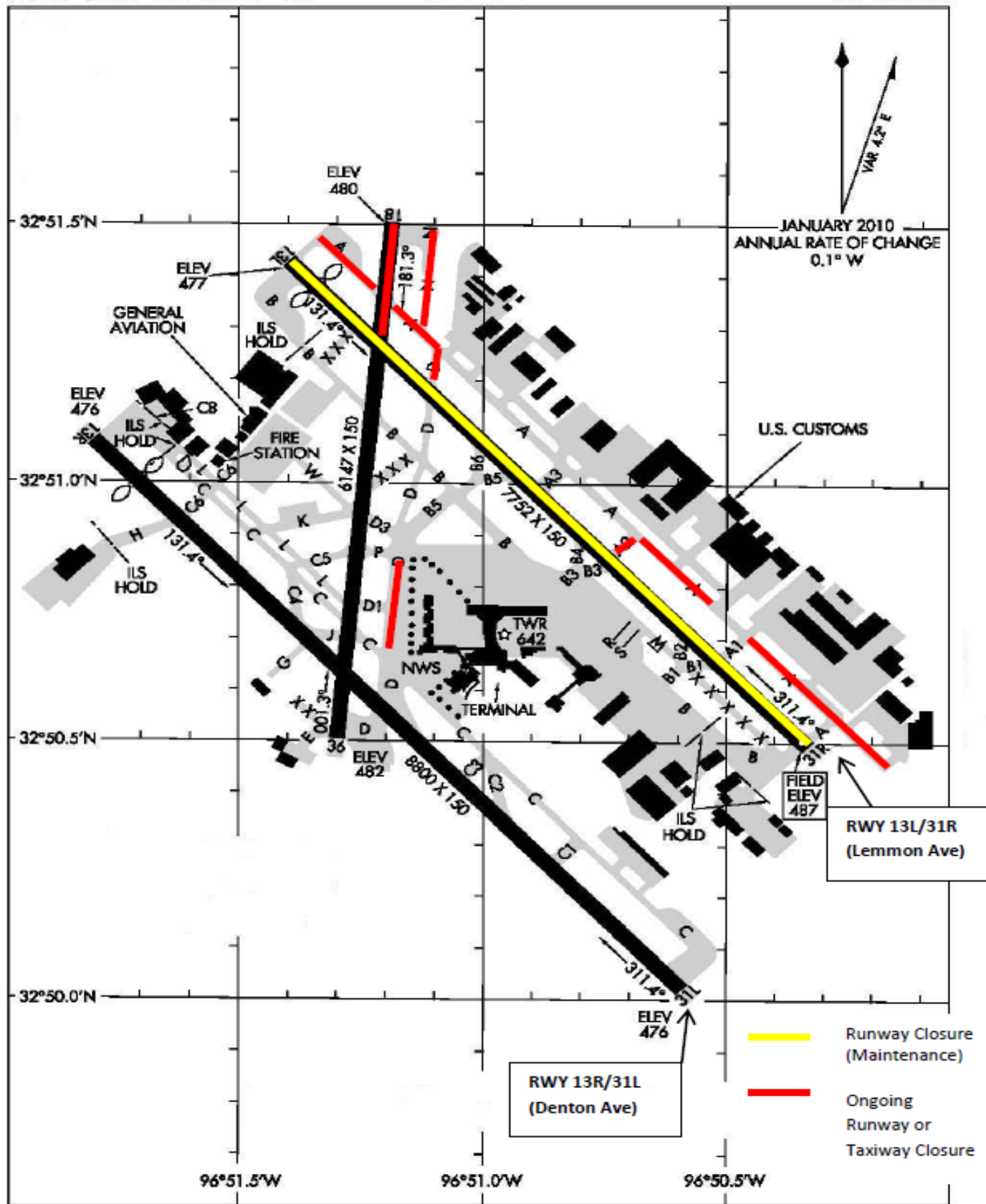
Ongoing Airfield Closures

- ◆ RWY 18/36 to remain closed, but will be available for taxiing south of RWY 13L/31R.
- ◆ TWY A closed between 460ft west of TWY A1 and 260ft west of TWY A2 on May 9th for approximately 4 weeks.
- ◆ TWY A2 closed for approximately 4 weeks beginning May 9th.
- ◆ TWY D closed from TWY P to TWY C until March 2014.
- ◆ **The following taxiways will remain closed until further notice:**
 - TWY A closed from TWY D to the approach end of RWY 13L.
 - TWY A closed 150ft SE at approach end of RWY 31R.
 - TWY C between C2 and D closed to aircraft with wingspan more than 118ft.
 - TWY D closed between RWY 13L/31R to TWY A.
 - TWY D1 closed.
 - TWY N closed.

**Please see the airport diagram on the next page for the locations of runways and taxiways.*

AIRPORT DIAGRAM

DALLAS-LOVE FIELD (DAL)
DALLAS, TEXAS



AIRPORT DIAGRAM

DALLAS, TEXAS
DALLAS-LOVE FIELD (DAL)

Airport Operations Report

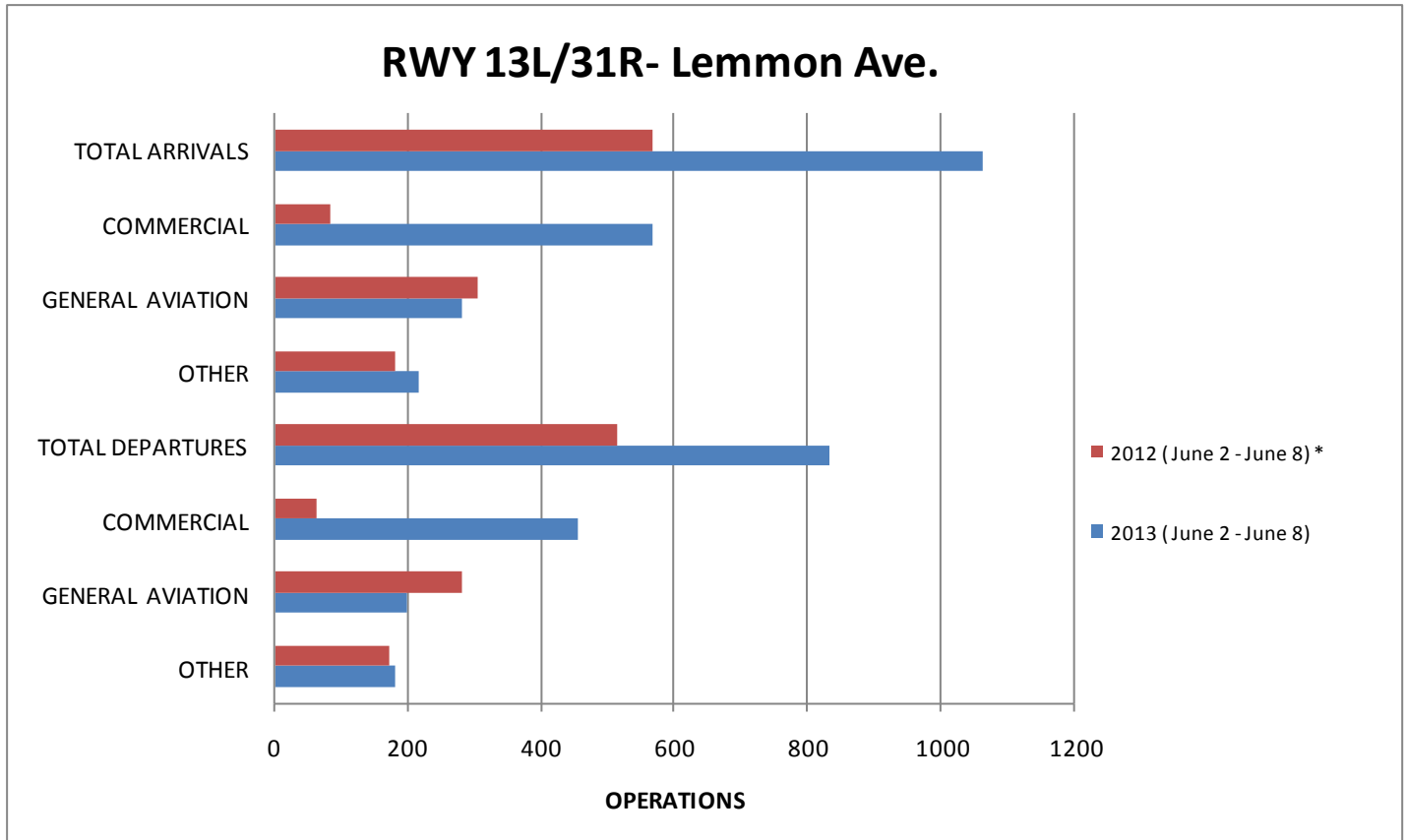
Total Operations for the Week of June 2– June 8, 2013

13L / 31R (Lemmon)

13R / 31L (Denton)

June 2–June 8	Total	Avg per Day			Total	Avg per Day
Arrivals	1063	152		Arrivals	383	55
Commercial	567	81		Commercial	223	32
GA	280	40		GA	102	15
Other	216	31		Other	58	8
Departures	834	119		Departures	250	36
Commercial	456	65		Commercial	132	19
GA	199	28		GA	75	11
Other	179	26		Other	43	6

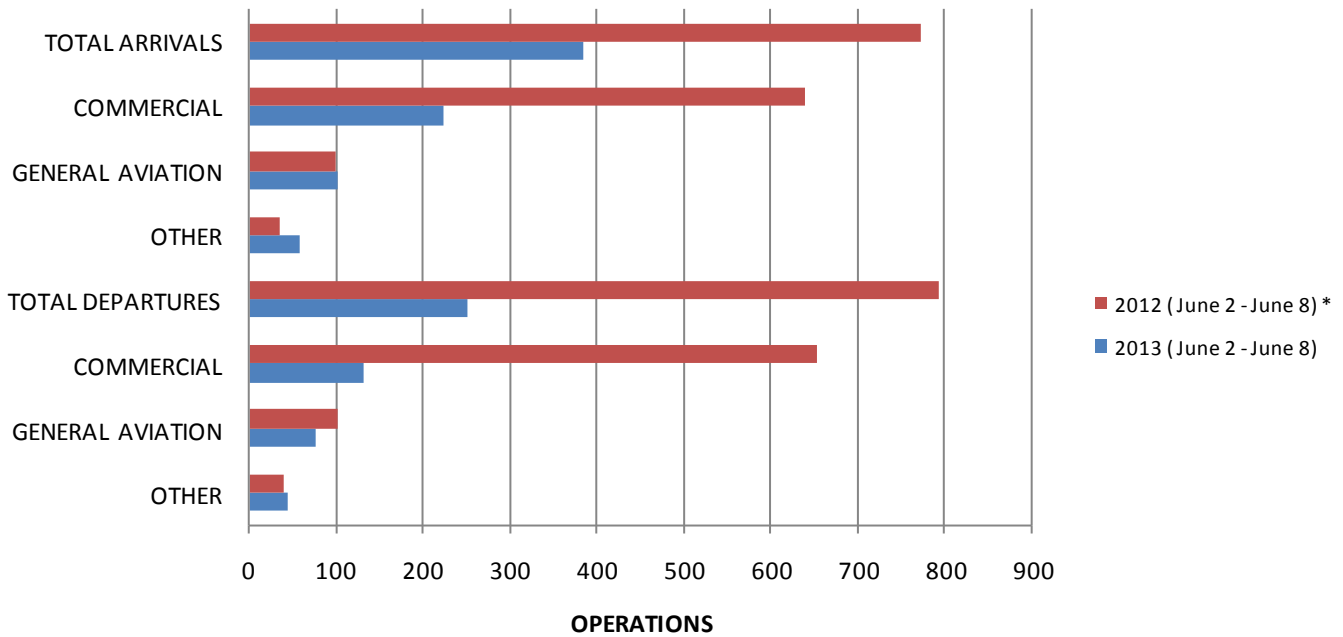
Annual Comparison



* RWY 13L/31R (Lemmon) was Saturday June 2, 2012 from 12:00 p.m. until 5:00 p.m.

Airport Operations Report (Continued)

RWY 13R/31L- Denton Rd.



* Rwy 13R/31L (Denton) was closed Saturday June 2, 2012 from 7:00 a.m. until 12:00 p.m.

Community Weekly Update
June 15- June 21, 2013

Visit us at
www.dallas-lovefield.com/



For questions or concerns please
contact:

Courtenay Shorter
Aircraft Noise Coordinator
City of Dallas-Department of
Aviation
Phone: 214-670-6673

