



**DALLAS LOVE FIELD**  
Leading the **EVOLUTION** of the Airport Experience



**Community  
Weekly Update  
for  
June 22 -  
June 28, 2013**

## A Love Note from Me to You...

Dear Neighbors,

We are excited about the progress and changes that are taking place here at Dallas Love Field and we want you to be excited as well! If you are interested in some area that we are currently monitoring for our quarterly meetings of the LFEAC or if you have some particular interest in a time frame to be monitored, please let me know and I will try to accommodate that suggestion.

-Ms. Courtenay Shorter

### Contents

Construction Updates	Pg.2
Runway Closures	Pg.2
Airport Diagram	Pg.3
Airport Operations Report	Pg.4 & 5

### Want to get involved?

The Love Field Environmental Advisory Council (LFEAC) meets once every quarter. Please join us for round-table discussion and updates!!!

### Upcoming LFEAC Meetings:

- ◆ **July 11, 2013**
- ◆ **October 10, 2013**
- ◆ **January 9, 2014**



"Untitled, 2003" by artists Phillip Lamb and Susan Magilow.

The art piece pictured above is part of the Love Field Art Program and is located in the pedestrian walkway that connects passengers to the garages from the terminal.

For more information and updates about the Love Field Modernization Project (LFMP) please visit: <http://www.lovefieldmodernizationprogram.com/>

# Construction Activities

## Runway Safety Area (RSA)

The Runway Safety Area (RSA) project has now been completed.

Work continues on taxiways A, B, and D. As work continues along these taxiways, there will be some limitations on the access to the approach ends of RWY 13L/31R (Lemmon).

Taxiway D between Taxiway C and Taxiway P was closed Tuesday May 28, 2013 as work continues for the next phase of the Love Field Modernization Project (LFMP).

This phase of the project is expected to be completed in Spring of 2014 and it includes the demolition of Gates 4 through 15 of the west concourse and the baggage claim wing.

If you would like to learn more about the LFMP please visit:



[http://www.dallas-lovefield.com/pdf/LFMP\\_Newsletter\\_0412.pdf](http://www.dallas-lovefield.com/pdf/LFMP_Newsletter_0412.pdf)

## Runway Closures

### Scheduled Runway Closures for Routine Maintenance

RWY 13L/31R will be closed Saturday June 22, 2013 from 7:00am to 5:00pm.

### Ongoing Airfield Closures

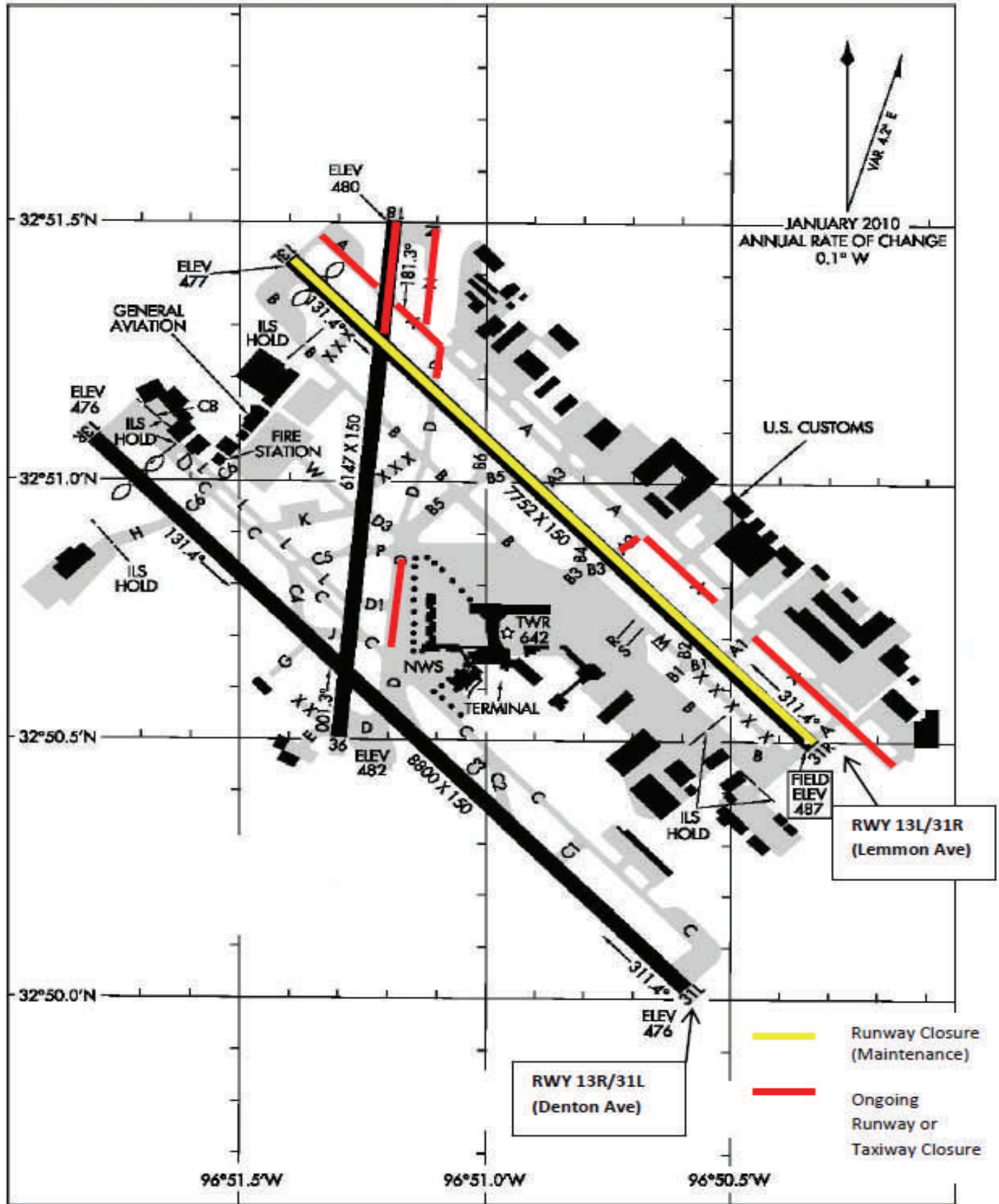
- ◆ RWY 18/36 to remain closed, but will be available for taxiing south of RWY 13L/31R.
- ◆ TWY A closed between 460ft west of TWY A1 and 260ft west of TWY A2 on May 9th for approximately 4 weeks.
- ◆ TWY A2 closed for approximately 4 weeks beginning May 9th.
- ◆ TWY D closed from TWY P to TWY C until March 2014.
- ◆ **The following taxiways will remain closed until further notice:**
  - TWY A closed from TWY D to the approach end of RWY 13L.
  - TWY A closed 150ft SE at approach end of RWY 31R.
  - TWY C between C2 and D closed to aircraft with wingspan more than 118ft.
  - TWY D closed between RWY 13L/31R to TWY A.
  - TWY D1 closed.
  - TWY N closed.



***\*Please see the airport diagram on the next page for the locations of runways and taxiways.***

# AIRPORT DIAGRAM

DALLAS-LOVE FIELD (DAL)  
DALLAS, TEXAS



# AIRPORT DIAGRAM

DALLAS, TEXAS  
DALLAS-LOVE FIELD (DAL)

# Airport Operations Report

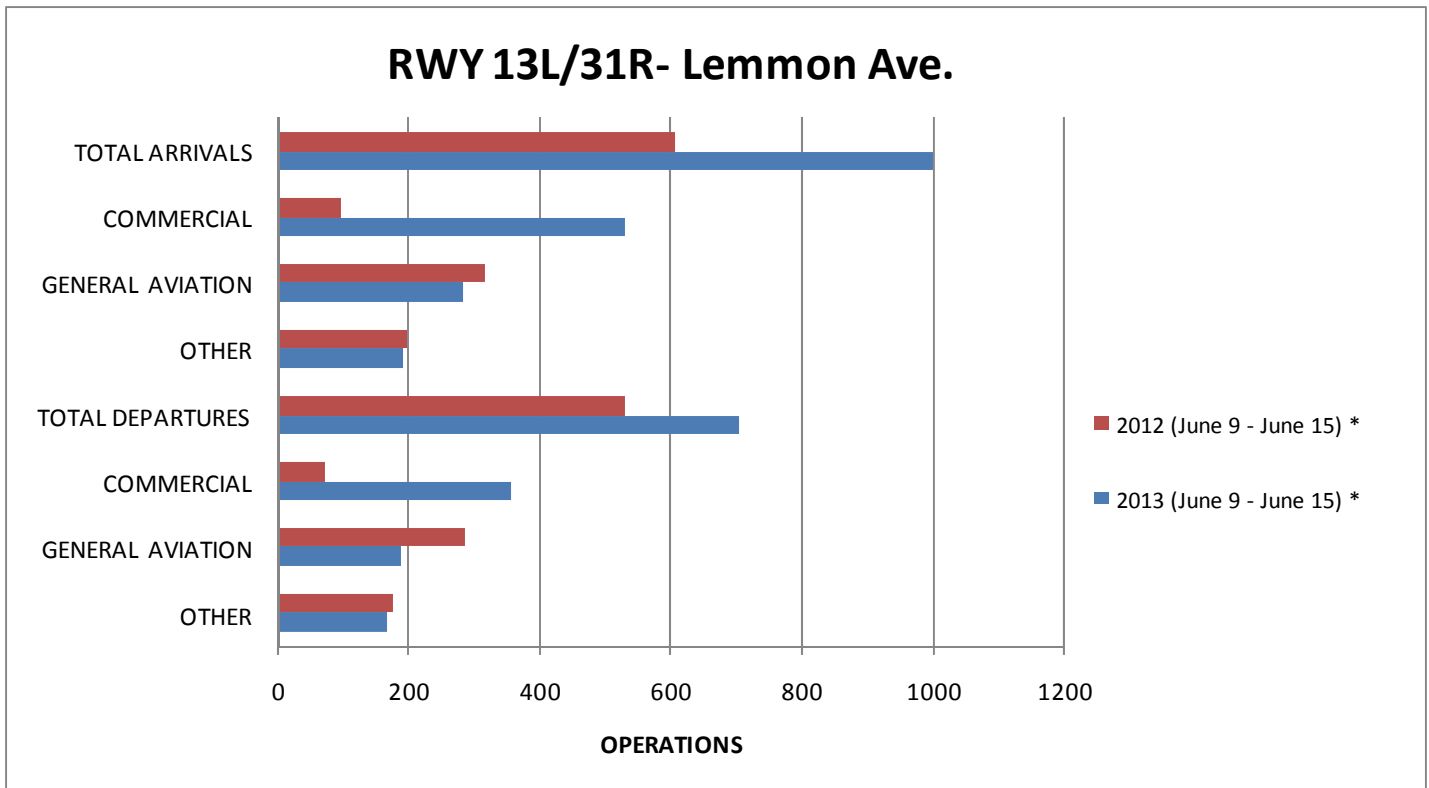
## Total Operations for the Week of June 9– June 15, 2013

13L / 31R (Lemmon)

13R / 31L (Denton)

June 9–June 15	Total	Avg per Day		Total	Avg per Day
<b>Arrivals</b>	1002	143	<b>Arrivals</b>	431	62
Commercial	530	76	Commercial	256	37
GA	283	40	GA	127	18
Other	189	27	Other	48	7
<b>Departures</b>	704	101	<b>Departures</b>	310	44
Commercial	354	51	Commercial	174	25
GA	186	27	GA	91	13
Other	164	23	Other	45	6

### Annual Comparison



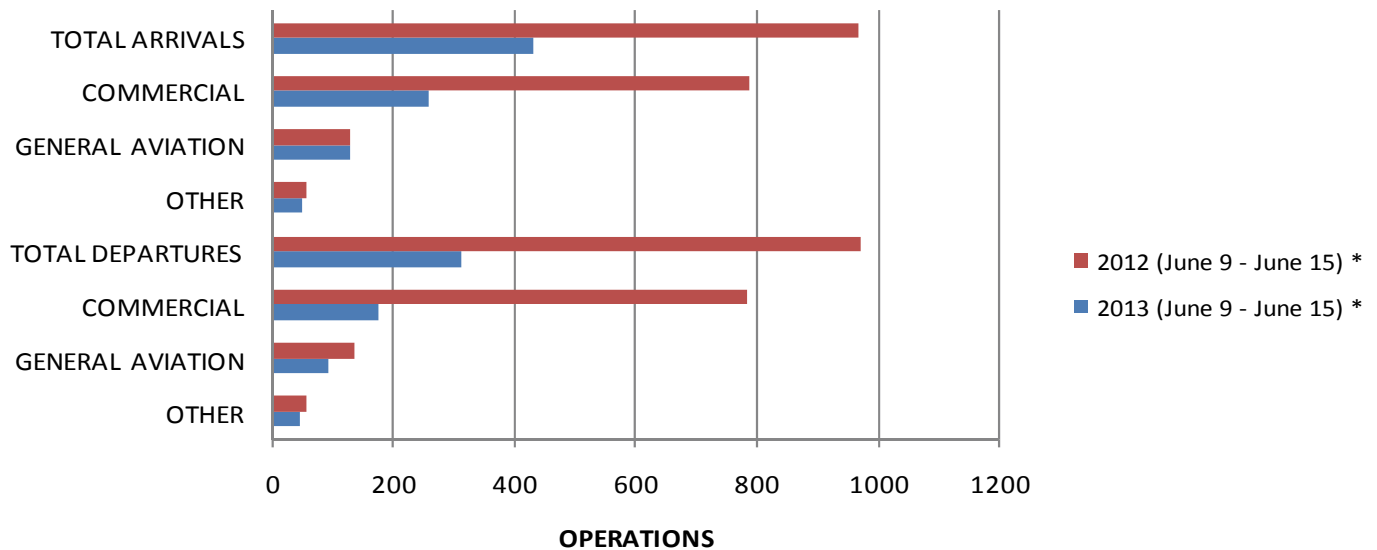
\* RWY 13L/31R (Lemmon) was closed Saturday June 9, 2012 from 7:00 a.m. until 8:00 p.m.

\* RWY 13L/31R (Lemmon) was closed Thursday June 14, 2012 at 10:00 p.m. until Friday June 15, 2012 at 4:00 a.m.

\* RWY 13L/31R (Lemmon) was closed Saturday June 15, 2013 from 6:00 a.m. until 2:00 p.m.

# Airport Operations Report (Continued)

## RWY 13R/31L- Denton Rd.



\* Rwy 13R/31L (Denton) was closed Sunday June 10, 2012 from 7:00 a.m. until 12:00 p.m.

\* Rwy 13R/31L (Denton) was closed Thursday June 13, 2013 at 11:00 p.m. until Friday June 14, 2013 at 12:00 a.m.

**Community Weekly Update**  
**June 22- June 28, 2013**

Visit us at  
[www.dallas-lovefield.com/](http://www.dallas-lovefield.com/)



For questions or concerns please contact:

Courtenay Shorter  
 Aircraft Noise Coordinator  
 City of Dallas-Department of  
 Aviation  
 Phone: 214-670-6673

