



Community Weekly Update for March 30 – April 5, 2013

A Love Note from Me to You...

Dear Neighbors,

The next LFEAC meeting will be held April 11, 2013 at 6pm in Conference Room B of the Aviation Department Administration Building. The physical address is 7610 Aviation Place Dallas, Texas 75235. We are planning a tour of the new terminal during this meeting so please come prepared to view the new facility. **If you are planning to join us at the April LFEAC meeting please contact me via email at courtenay.shorter@dallascityhall.com by Monday April 8th as we will need to have a headcount for this event.**

The Dallas Mavericks will have one home game this week on Saturday March 30th. The Dallas Stars will also have three home games this week on Friday March 29th, Sunday March 31st, and Monday April 1st. Please be advised that there could be an increase in general aviation traffic due to these games.

There is also a chance of thunderstorms in the forecast for this weekend. Please be advised that this could result in later than normal or increased air traffic due to delays or diversions.

We are excited about the progress and changes that are taking place here at Dallas Love Field and we want you to be excited as well! If you are interested in some area that we are currently monitoring for our quarterly meetings of the LFEAC or if you have some particular interest in a time frame to be monitored, please let me know and I will try to accommodate that suggestion.

-Ms. Courtenay Shorter

Contents

Construction Updates	Pg.2
Runway Closures	Pg.2
Airport Diagram	Pg.3
Airport Operations Report	Pg.4 & 5

Want to get involved?

The Love Field Environmental Advisory Council (LFEAC) meets once every quarter. Please join us for round-table discussion and updates!!!

Upcoming LFEAC Meetings:

- ◆ **April 11, 2013**
- ◆ July 11, 2013
- ◆ October 10, 2013



The above piece is entitled: *Sky, 2013* by artist Brower Hatcher. This piece is a part of the Dallas Love Field Art Program and is located in the Concessions Diamond of the new terminal.

For more information and updates about the Love Field Modernization Project (LFMP) please visit: <http://www.lovefieldmodernizationprogram.com/>

Construction Activities

Runway Safety Area (RSA)

In order to meet current FAA requirements, modifications to RWY 13L/31R must be made to have the appropriate amount of safety area (1,000 feet) at the north end of the runway.

As of December 21, 2012, Taxiway Bravo has been re-opened and the RSA project is scheduled to begin February 11, 2013.

To complete the modifications needed all work will be done in phases. Phase 1 of the project requires a closure of RWY 13L/31R (Lemmon) for approximately 60 days beginning February 18, 2013 followed by a 120 day period of overnight closures as needed.

If you would like to learn more about the LFMP please visit:

http://www.dallas-lovefield.com/pdf/LFMP_Newsletter_0412.pdf



Water Main Replacement

DWU has contracted with Atkins Brothers Construction to install a 48" water line around Love Field from the Shorecrest Weiss Street intersection to approximately the 8000 block of Lemmon Avenue. Shorecrest is currently closed from Reeves Street to Webb Chapel Road as construction continues. Work continues on the eastbound side of Lemmon Ave from the intersection at Shorecrest to Lovers Lane. All work will be completed in phases. Estimated completion for the project is Spring 2013.

Runway Closures

Scheduled Runway Closures for Routine Maintenance

Runway 13L/31R (Lemmon) will remain closed until approximately April 18, 2013.

Ongoing Airfield Closures

- ◆ RWY 18/36 to remain closed, but will be available for taxiing south of TWY B.
- ◆ The following taxiways will remain closed until further notice:
 - TWY A closed from TWY D to the approach end of RWY 13L.
 - TWYs A3, B2, B4, B6, and N.
 - TWY B5 closed from TWY B to RWY 13L.
 - TWY D closed from TWY B to TWY A.
 - TWY M closed between TWY R and B1.

**Please see the airport diagram on the next page for the locations of runways and taxiways.*

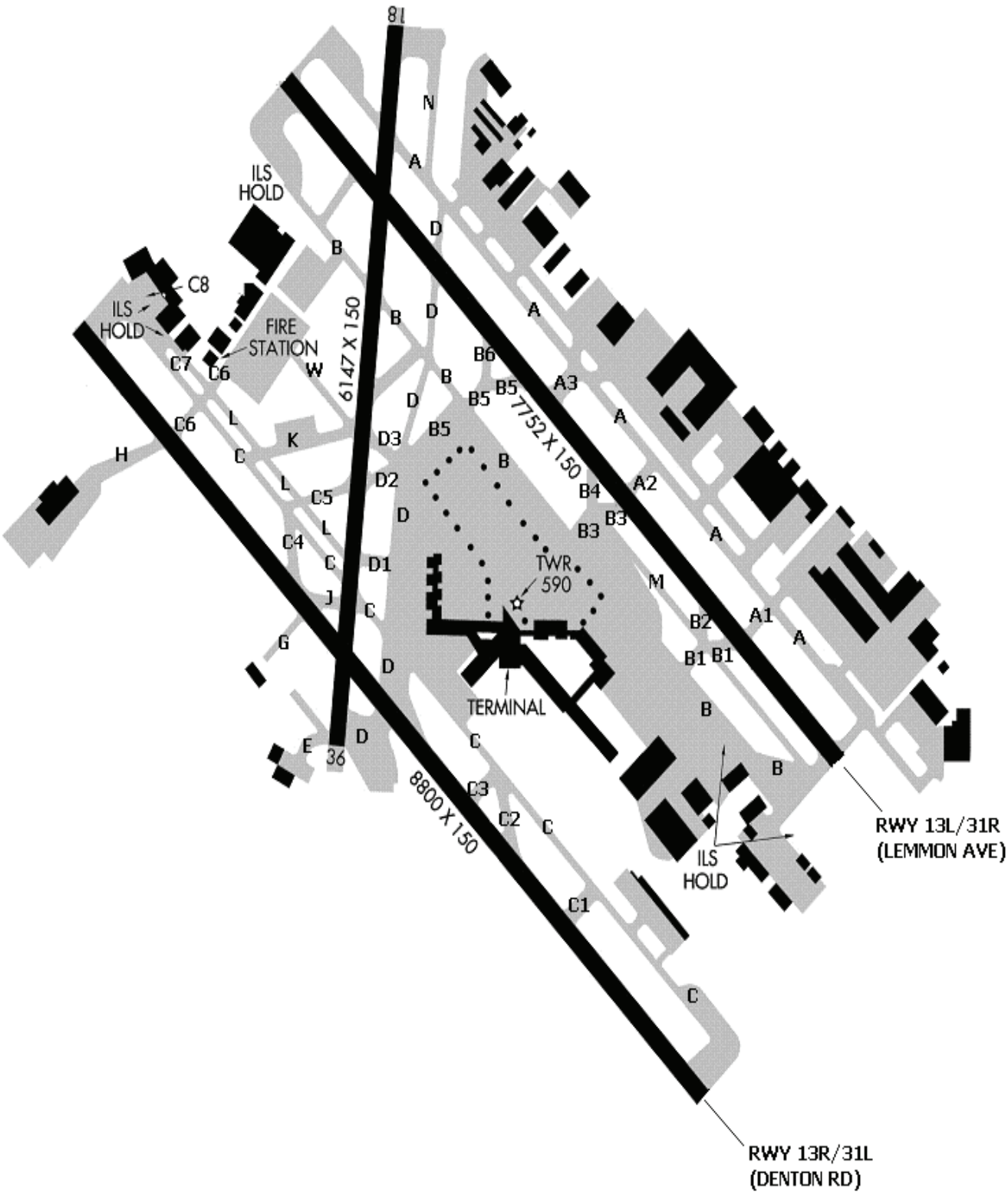


Everyday Environmental Tip



Be sure to clean your dryer's lint filter before each washload. By doing so you can reduce your energy usage by as much as 30%. You will also help extend your dryer's life by operating it more efficiently and prevent a fire hazard.

Airport Diagram



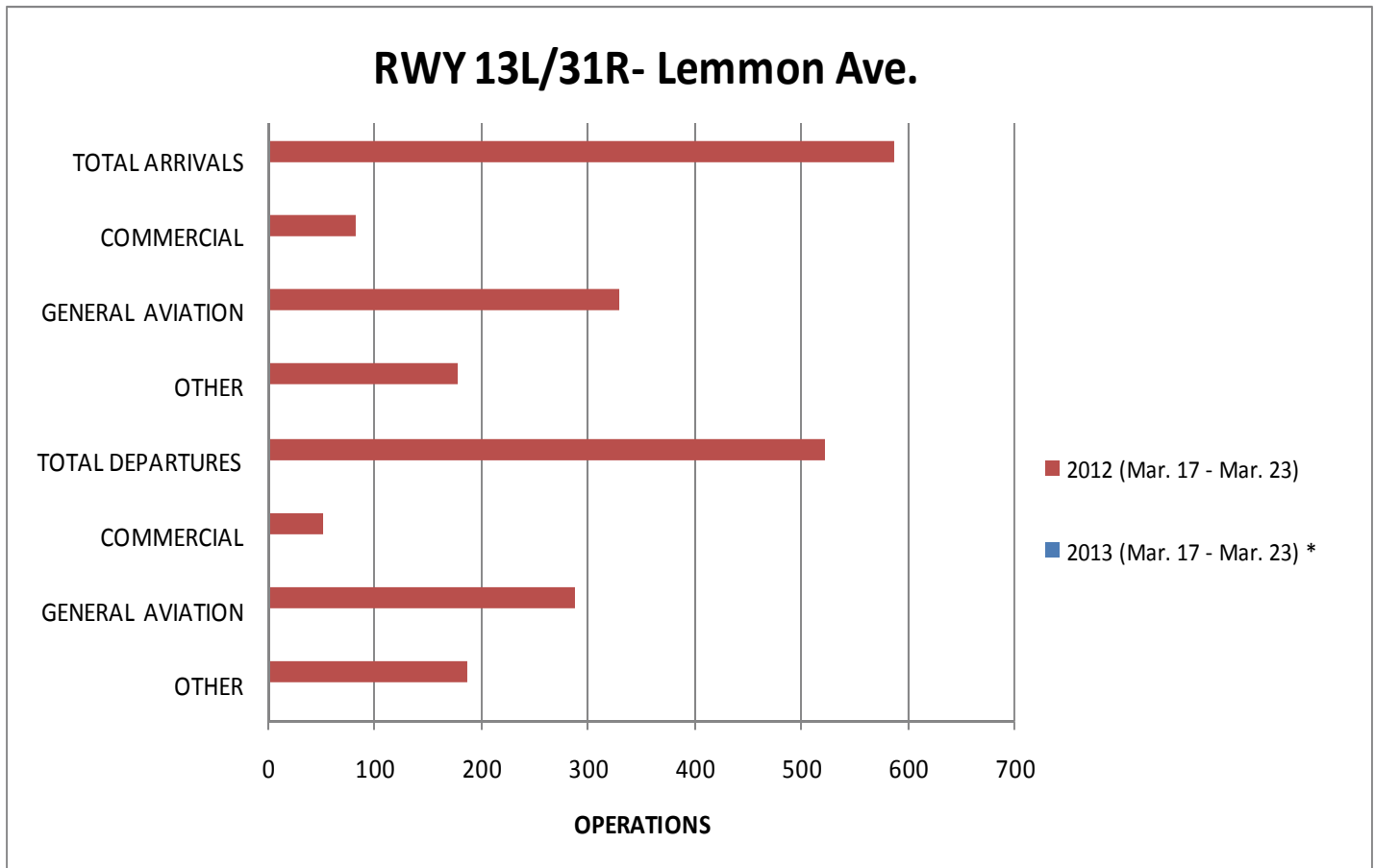
Airport Operations Report

Total Operations for the Week of March 17– March 23, 2013

13L / 31R (Lemmon)

13R / 31L (Denton)

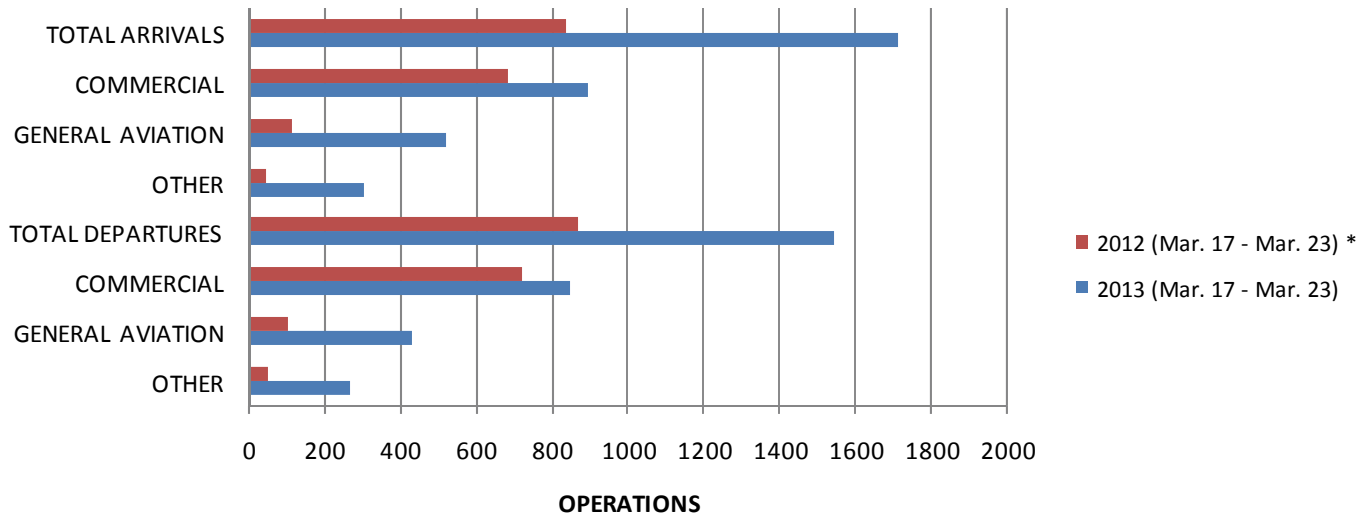
Mar. 17–Mar. 23	Total	Avg per Day		Total	Avg per Day
Arrivals	0	0	Arrivals	1716	245
Commercial	0	0	Commercial	894	128
GA	0	0	GA	519	74
Other	0	0	Other	303	43
Departures	0	0	Departures	1543	220
Commercial	0	0	Commercial	845	121
GA	0	0	GA	431	62
Other	0	0	Other	267	38



◆ Rwy 13L/31R (Lemmon) closed Monday February 18, 2013 at 8:00AM and will remain closed until approximately April 18, 2013.

Airport Operations Report (Continued)

RWY 13R/31L- Denton Rd.



- ◆ **Rwy 13R/31L (Denton) was closed Sunday March 18, 2012 at 10 p.m. until Monday March 19, 2012 at 4:00 a.m.**
- ◆ **Rwy 13R/31L (Denton) was closed Monday March 19, 2012 at 10 p.m. until Tuesday March 20, 2012 at 4:00 a.m.**
- ◆ **Rwy 13R/31L (Denton) was closed Tuesday March 20, 2012 at 10 p.m. until Wednesday March 21, 2012 at 4:00 a.m.**
- ◆ **Rwy 13R/31L (Denton) was closed Wednesday March 21, 2012 at 10 p.m. until Thursday March 22, 2012 at 4:00 a.m.**
- ◆ **Rwy 13R/31L (Denton) was closed Thursday March 22, 2012 at 10 p.m. until Friday March 23, 2012 at 4:00 a.m.**

**Community Weekly Update
March 30- April 5, 2013**

Visit us at
www.dallas-lovefield.com/



For questions or concerns please contact:

Courtenay Shorter
Aircraft Noise Coordinator
City of Dallas-Department of
Aviation
Phone: 214-670-6673

