



**Community Weekly Update for January 5- January 11, 2013**

## A Love Note from Me to You...

Dear Neighbors,

We hope that all of you had a wonderful holiday! There are many great things in store for 2013!

**Our next quarterly LFEAC meeting will be January 10, 2013 at 6pm in the Department of Aviation Building.** The physical address is 7610 Aviation Place Dallas, Texas 75235 and we will be in Conference Room B. We hope to see you all there! The Dallas Mavericks will have one home game during this week on Saturday January 5th . Please be advised that there could be an increase in general aviation traffic due to this game.

We are excited about the progress and changes that are taking place here at Dallas Love Field and we want you to be excited as well! If you are interested in some area that we are currently monitoring for our quarterly meetings of the LFEAC or if you have some particular interest in a time frame to be monitored, please let me know and I will try to accommodate that suggestion.

-Ms. Courtenay Shorter

Contents	
Construction Updates	Pg.2
Runway Closures	Pg.2
Airport Diagram	Pg.3
Airport Operations Report	Pg.4 & 5

### Want to get involved?

*The Love Field Environmental Advisory Council (LFEAC) meets once every quarter. Please join us for round-table discussion and updates!!!*

### Upcoming LFEAC Meetings:

- ◆ **January 10, 2013**
- ◆ *April 11, 2013*
- ◆ *July 11, 2013*



Entrance into Terminal 2 via curbside check-in.

For more information and updates about the Love Field Modernization Project (LFMP) please visit: <http://www.lovefieldmodernizationprogram.com/>

## Everyday Environmental Tip

If you must purchase new appliances or electronics, make sure they are ENERGY STAR-certified models. These models are designed to use less energy for everyday tasks.



## Construction Activities

### Runway Safety Area (RSA)

In order to meet current FAA requirements, modifications to RWY 13L/31R must be made to have the appropriate amount of safety area (1,000 feet) at the north end of the runway. In order for the Runway Safety Area (RSA) Project to begin construction, it is necessary for construction elements to be completed on Taxiway Bravo to allow the Love Field Modernization Program (LFMP) to remain on schedule.

As of December 21, 2012, Taxiway Bravo has been reopened. The RSA project is currently in the final design and bid phases. The construction dates and schedule are pending. Once the project has begun, there is an expected closure of RWY 13L/31R (Lemmon) for approximately 60 to 90 days while the RSA project is under construction.

If you would like to learn more about the LFMP please visit:

[http://www.dallas-lovefield.com/pdf/LFMP\\_Newsletter\\_0412.pdf](http://www.dallas-lovefield.com/pdf/LFMP_Newsletter_0412.pdf)



### Water Main Replacement

DWU has contracted with Atkins Brothers Construction to install a 48" water line around Love Field from the Shorecrest Weiss Street intersection to approximately the 8000 block of Lemmon Avenue. Shorecrest is currently closed from Webb Chapel Road to Lemmon Avenue as construction continues. Work continues on the eastbound side of Lemmon Ave from the intersection at Shorecrest to Lovers Lane. All work will be completed in phases. Estimated completion for the project is Spring 2013.

## Runway Closures

### Scheduled Runway Closures for Routine Maintenance

RWY 13R/31L (Denton) will be closed Friday January 4, 2013 at 10:00 p.m. until Saturday January 5, 2013 at 6:00 a.m. for airfield maintenance.

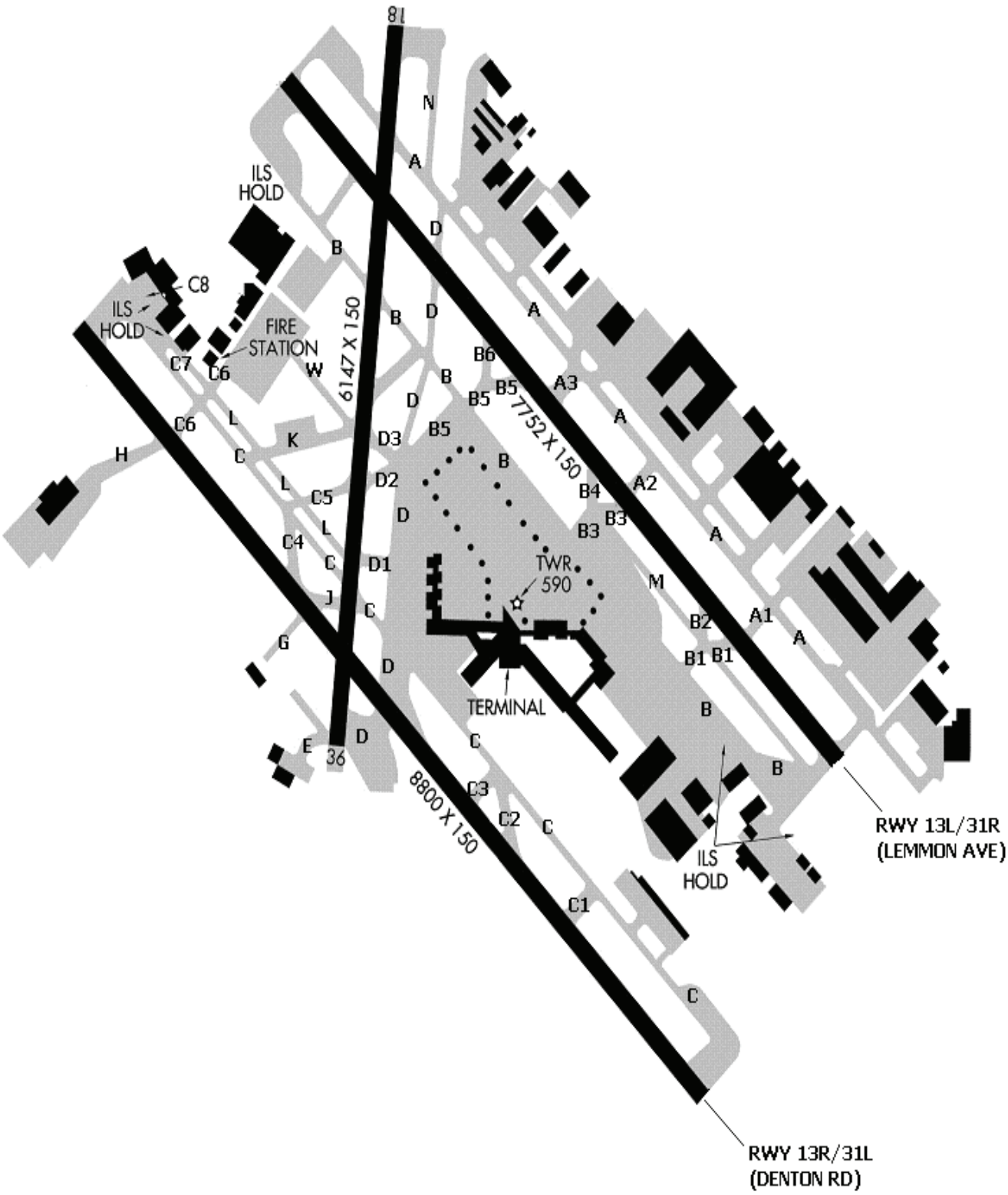


### Ongoing Airfield Closures

- ◆ RWY 18/36 to remain closed, but will be available for taxiing.
- ◆ TWY B1 and TWY B2 will be closed January 5, 2013 from 8:00 AM to 5:00 PM.
- ◆ TWY B5 and TWY B6 will be closed January 7, 2013 from 8:00 AM to 5:00 PM.
- ◆ TWY B from TWY B3 to TWY D, to be closed nightly from 10:00 PM to 5:00 AM beginning January 8, 2013 through January 11, 2013.
- ◆ TWY B5 from TWY D to TWY B, is currently closed for construction.
- ◆ TWY M will remain closed for construction.

***\*Please see the airport diagram on the next page for the locations of runways and taxiways.***

# Airport Diagram



# Airport Operations Report

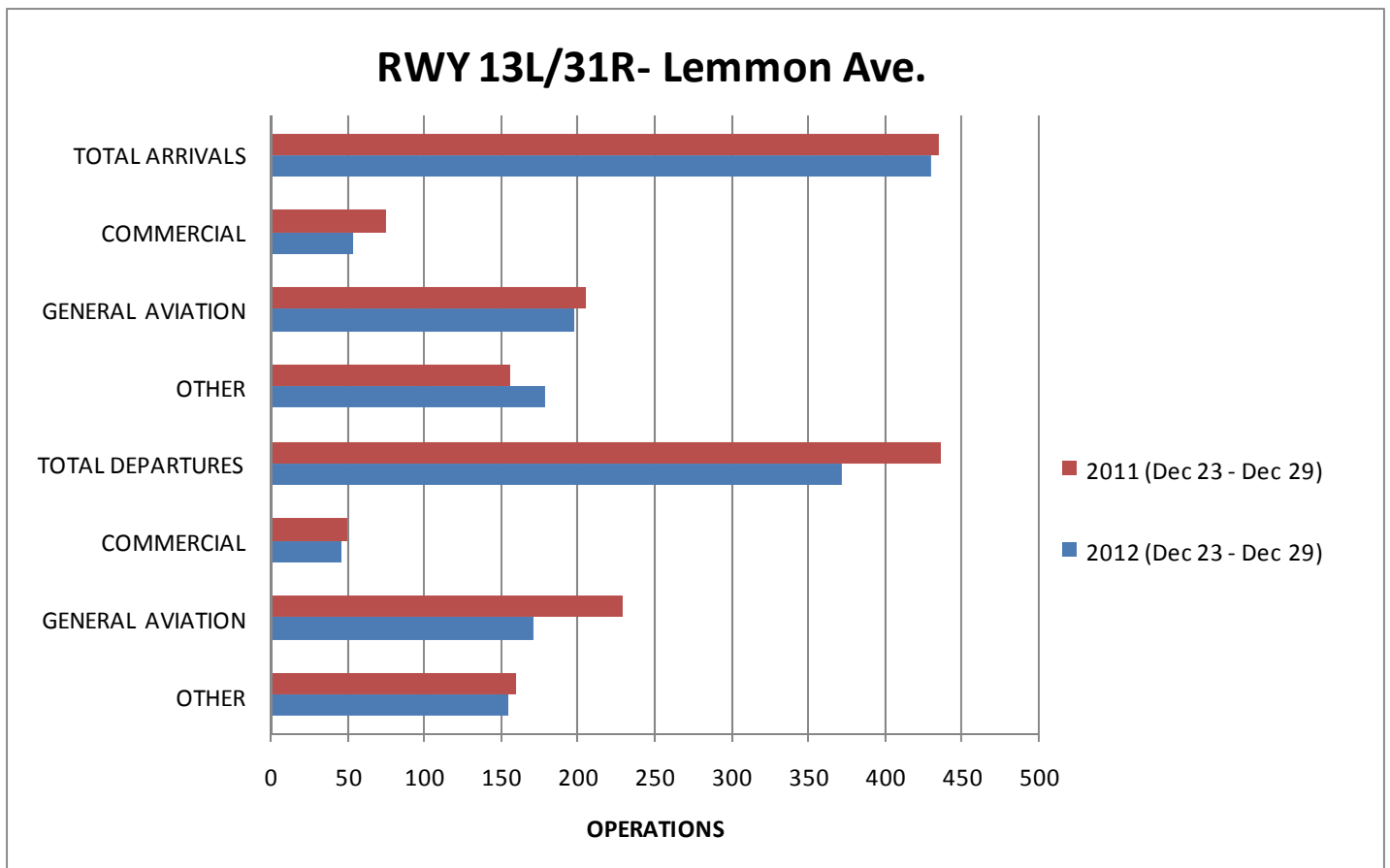
## Total Operations for the Week of December 23– December 29, 2012

13L / 31R (Lemmon)

13R / 31L (Denton)

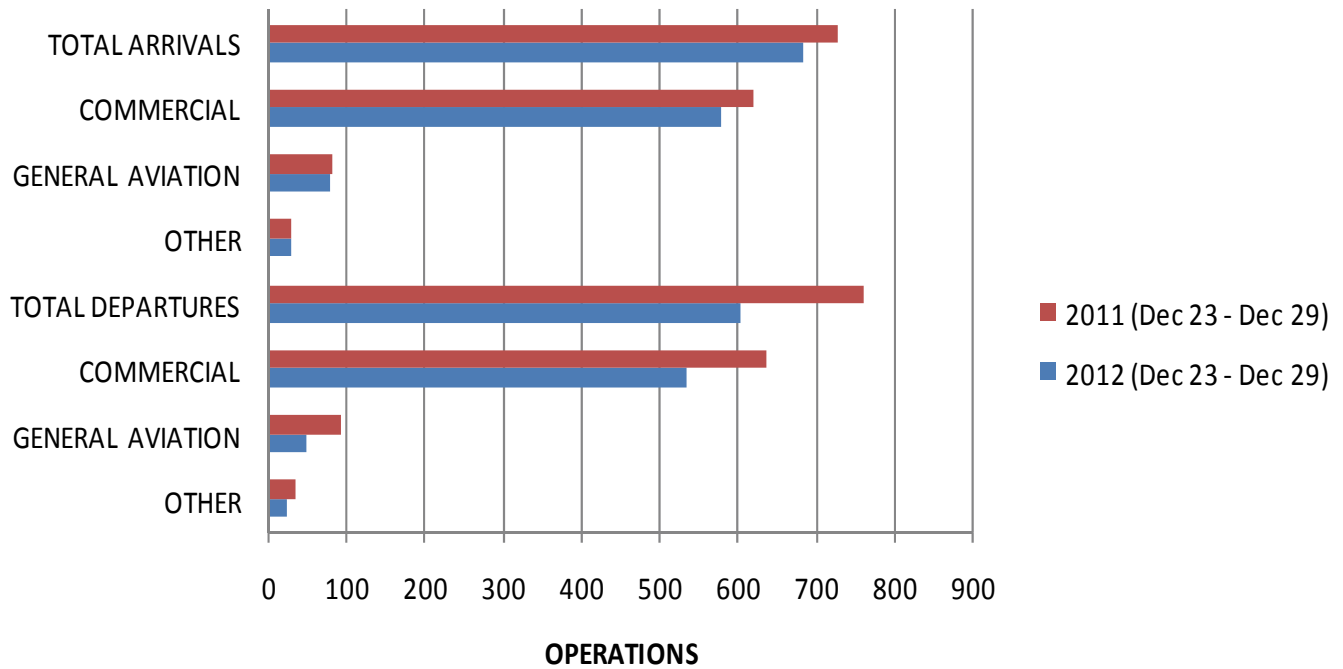
Dec 23–Dec 29	Total	Avg per Day		Total	Avg per Day
<b>Arrivals</b>	430	61		<b>Arrivals</b>	685
Commercial	53	8		Commercial	580
GA	198	28		GA	78
Other	179	26		Other	27
<b>Departures</b>	372	53		<b>Departures</b>	605
Commercial	46	7		Commercial	534
GA	171	24		GA	48
Other	155	22		Other	23

### Annual Comparison



## Airport Operations Report (Continued)

### RWY 13R/31L- Denton Rd.



**Community Weekly Update**  
**January 5 – January 11, 2013**

Visit us at  
[www.dallas-lovefield.com/](http://www.dallas-lovefield.com/)



For questions or concerns please  
contact:

Courtenay Shorter  
Aircraft Noise Coordinator  
City of Dallas-Department of  
Aviation  
Phone: 214-670-6673

