

PRESERVED HISTORIC STAINED GLASS WINDOW CREATED BY ARTIST OCTAVIO MEDELLIN

# Dallas Love Field Community Weekly Update

## IN THIS ISSUE



## A Love Note from Me to You...

by Ms. Courtenay Shorter

### Academy of Country Music Awards in Arlington, TX April 17-19, 2015

The Academy of Country Music Awards will be hosting a variety of events in Arlington, TX on April 17<sup>th</sup> through 19<sup>th</sup>. Please be advised that there could be an increase in air traffic due to participants attending various events.

### Sports Outlook for the Week

The Dallas Mavericks will have one home game this week on Friday April 24<sup>th</sup>. Please be advised that there could be an increase in general aviation air traffic due to these games.

### Want to get involved?

The Love Field Environmental Advisory Committee (LFEAC) meets quarterly. Please join us for roundtable discussion and updates!

The Airport Communications Center (ACC) is staffed 24 hours a day to direct your airport related concerns. If you are submitting an aircraft noise complaint please call the ACC at 214-670-**LOVE** (5683). Complaints may also be submitted through the airport's aircraft noise and operations portal, PublicVue. To submit complaints through the PublicVue module, please visit [www.dallas-lovefield.com](http://www.dallas-lovefield.com) and click on "Aircraft Noise Complaints".

### Construction Updates

Page 2

### Runway Closures

Page 2

### Airport Diagram

Page 3

### Airport Operations Report

Pages 4-5

### Upcoming LFEAC Meetings...

Thursday July 9, 2015

Thursday October 8, 2015

Thursday January 14, 2016



# Construction Updates

**\*UPDATE\*** Construction on portions of Taxiway C which hindered operations on departures in the north flow on 31R and arrivals in

the south flow on 13R was completed on April 6, 2015 and are now open for use.



## Runway Closures

### Scheduled Runway Closures for Routine Maintenance

All closures will be coordinated through Airport Operations and will be permitted based on weather and operational impact.

- ❖ Runway 13L/31R will be closed Wednesday April 22<sup>nd</sup> at 11:00pm until Thursday April 23<sup>rd</sup> at 5:30am for airfield maintenance.

### Scheduled Taxiway Closures for Routine Maintenance

- ❖ Taxiway C will be closed between Taxiway D and Runway 18/36 on Sunday April 19th at 11:59pm until Monday April 20<sup>th</sup> at 5:00am.
- ❖ Taxiway C will be closed between Taxiway D and Runway 18/36 on Monday April 20th at 11:59pm until Tuesday April 21<sup>st</sup> at 5:00am.
- ❖ Taxiway A will be closed between Taxiway A2 and approach end Runway 31R on Monday April 20th at 11:00pm until Tuesday April 21<sup>st</sup> at 5:00am
- ❖ Taxiway B will be closed between Taxiway B3 and Taxiway R on Tuesday April 21<sup>st</sup> at 11:00pm until Wednesday April 22<sup>nd</sup> at 5:00am
- ❖ Taxiway A will be closed between Taxiway A2 and Taxiway A3 on Thursday April 23<sup>rd</sup> at 11:00pm until Friday April 24<sup>th</sup> at 5:00am

### Ongoing Airfield Closures

The following taxiways will remain closed until further notice:

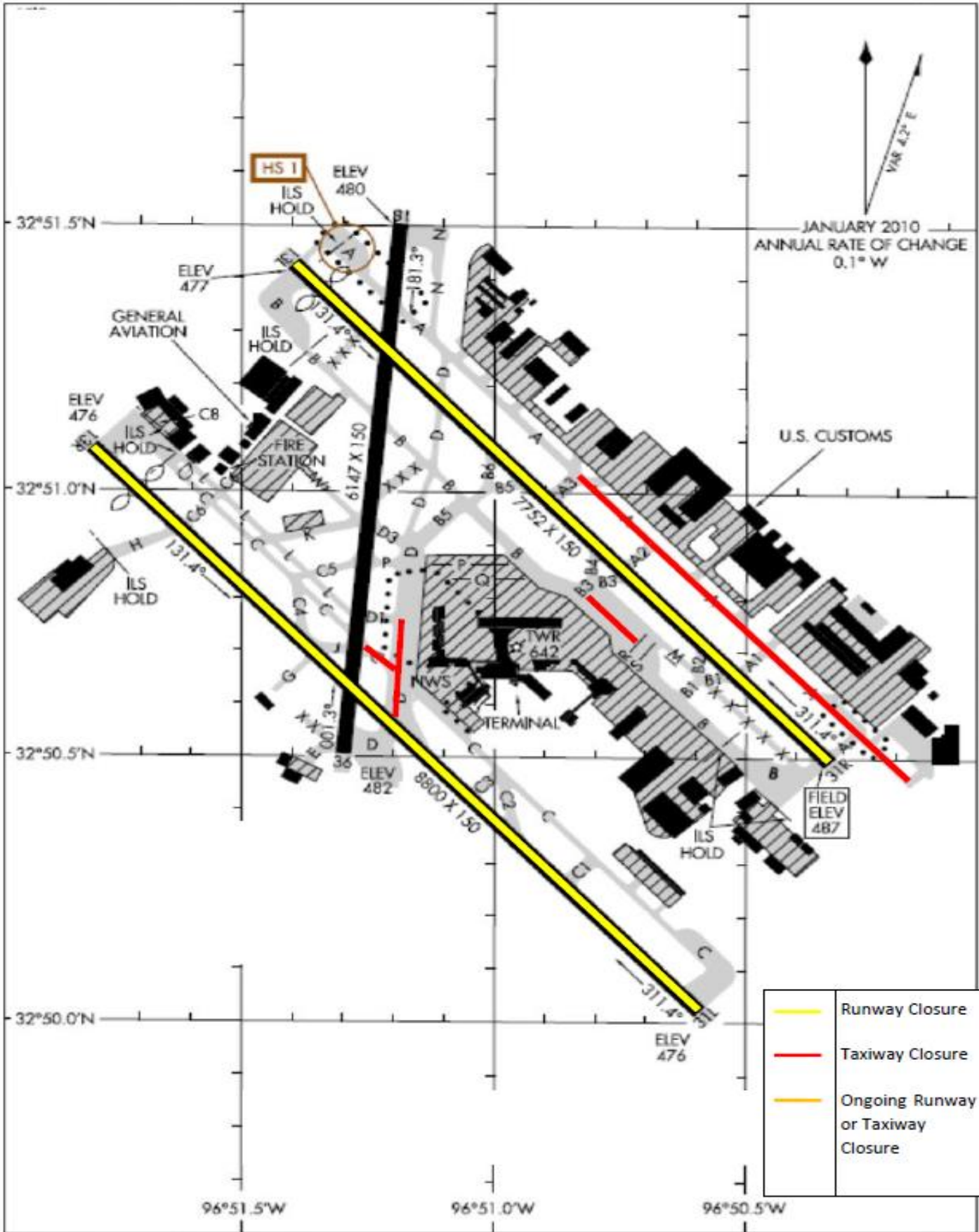
- ❖ Taxiway D closed lighted and barricaded between TWY D1 and RWY 13R/31L until Spring 2015.

\* Please see the airport diagram on the next page for locations of runways and taxiways.

14093

# AIRPORT DIAGRAM

DALLAS-LOVE FIELD (DAL)  
DALLAS, TEXAS



# AIRPORT DIAGRAM

14093

DALLAS, TEXAS  
DALLAS-LOVE FIELD (DAL)

# Airport Operations Report

Total Operations for the Week of April 5, 2015– April 11, 2015

	13L/31R (Lemmon)			13R/31L (Denton)	
Apr. 5 - Apr. 11					
<b>Arrivals</b>	1509	216	<b>Arrivals</b>	472	67
Commerical	924	132	Commerical	279	40
GA	402	57	GA	149	21
Other	183	26	Other	43	6
<b>Departures</b>	1140	163	<b>Departures</b>	864	123
Commerical	554	79	Commerical	646	92
GA	406	58	GA	154	22
Other	180	26	Other	63	9

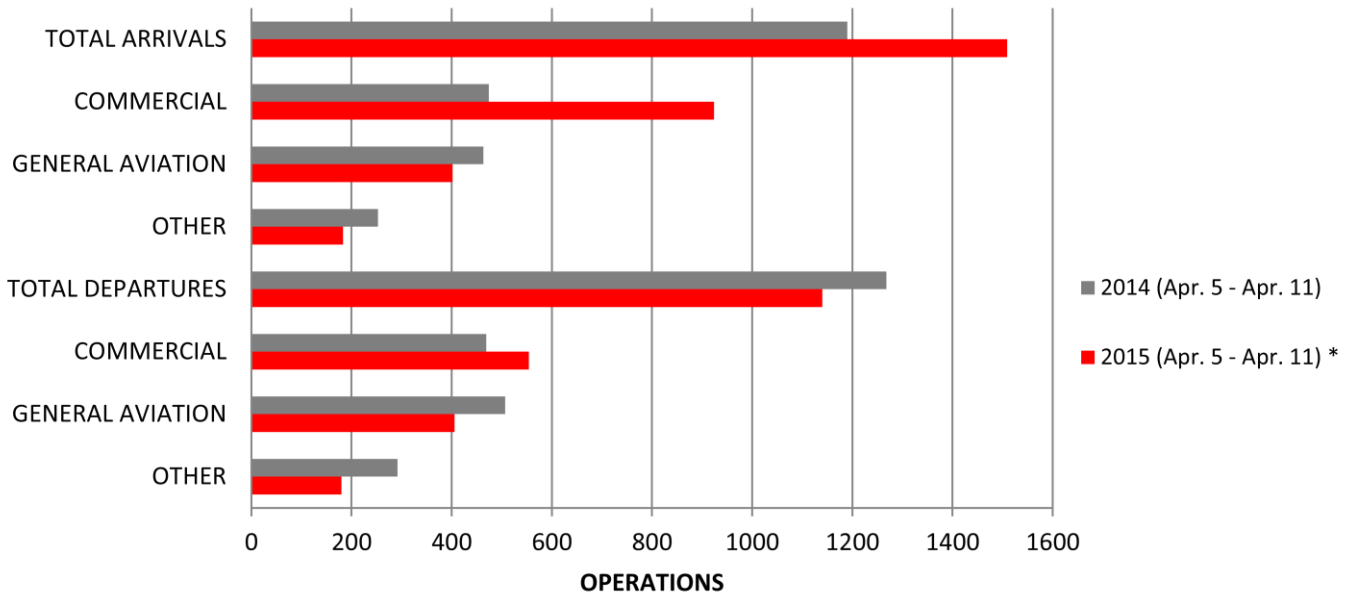
Total Arrivals for the week of Apr 5, 2015–Apr 11, 2015: 1992\*

Total Departures for the week of Apr 5, 2015–Apr 11, 2015: 2029\*

\*Total arrival and departure counts include operations that are listed as "unknown" in the system due to radar coverage that doesn't correlate them with a runway in the Noise and Operations Monitoring System.

\*\*Aircraft classified as other include military operations, non-scheduled commercial operations such as charter flights/air taxi, and helicopter operations.

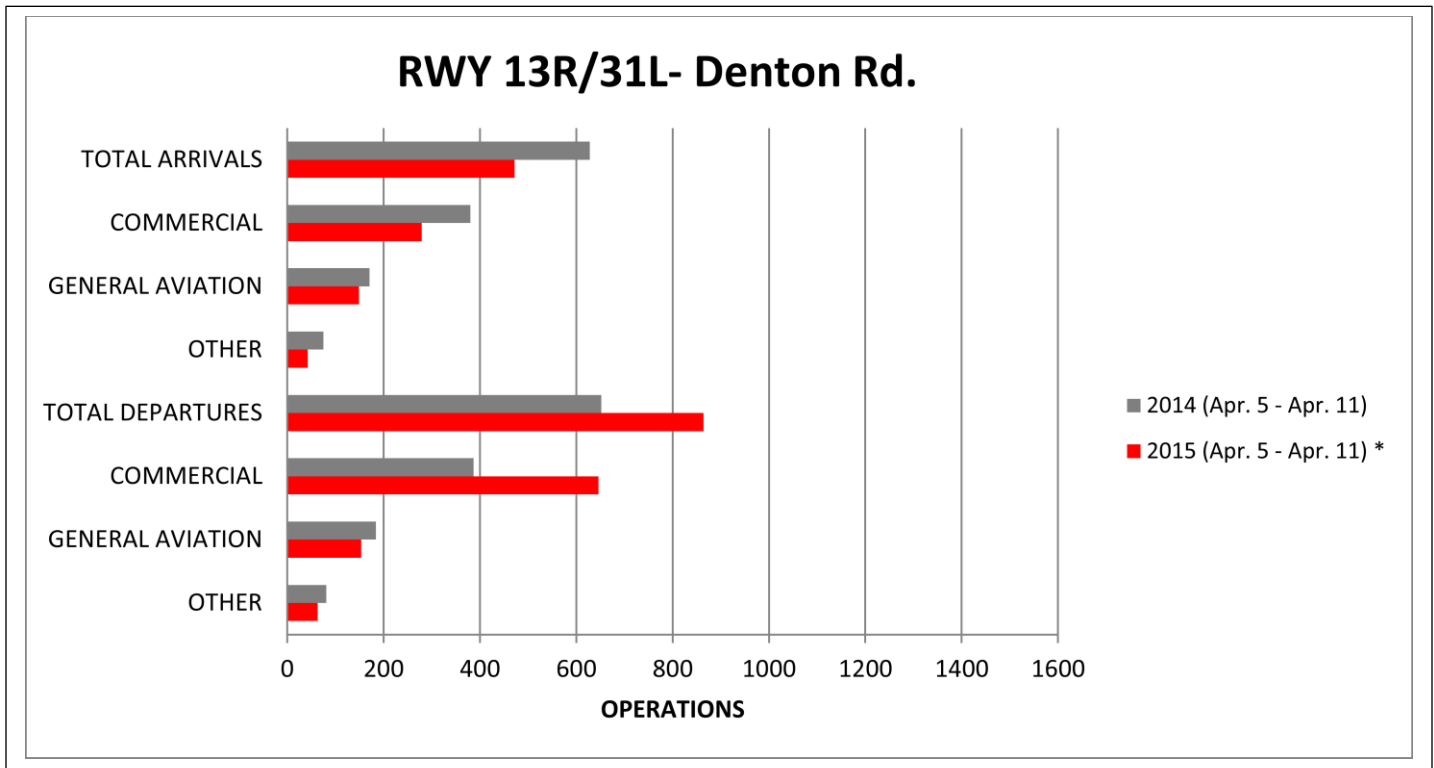
## RWY 13L/31R- Lemmon Ave.



❖ Runway 13L/31R was closed Wednesday Apr 8<sup>th</sup> at 11:00pm – Thursday Apr 9<sup>th</sup> at 5:30am.

# Airport Operations Report

Total Operations for the Week of April 5, 2015– April 11, 2015



- ❖ Runway 13R/31L was closed Sunday Apr 5<sup>th</sup> at 6:00 am – 12:00 pm.
- ❖ Runway 13R/31L was closed Sunday Apr 5<sup>th</sup> at 11:00 pm until Monday Apr 6<sup>th</sup> at 5:30 am.

## Dallas Love Field

8008 Cedar Springs Rd. LB 16

Dallas, Texas 75235

For questions or concerns please contact:

Courtenay Shorter

Aircraft Noise Coordinator

214-670-6673

courtenay.shorter@dallascityhall.com



DALLAS LOVE FIELD  
**AIRPORT  
COMMUNICATION  
CENTER**

**ANSWERING ALL YOUR  
QUESTIONS AT LOVE FIELD**

**EMAIL 214670LOVE@DALLASCITYHALL.COM  
PHONE 214-670-LOVE (5683)**

In an effort to serve you better, Dallas Love Field has opened the Airport Communications Center (ACC) for your use. The ACC is staffed 24 hours a day to direct your airport related concerns. If you are submitting an aircraft noise complaint please call the ACC at 214-670-LOVE (5683). Complaints may also be submitted through the airport’s aircraft noise and operations portal, PublicVue. To submit complaints through the PublicVue module, please visit [www.dallas-lovefield.com](http://www.dallas-lovefield.com) and click on “Aircraft Noise Complaints”.