



Community Weekly Update for August 10- August 16, 2013

A Love Note from Me to You...

Dear Neighbors,

We are excited about the progress and changes that are taking place here at Dallas Love Field and we want you to be excited as well! If you are interested in some area that we are currently monitoring for our quarterly meetings of the LFEAC or if you have some particular interest in a time frame to be monitored, please let me know and I will try to accommodate that suggestion.

-Ms. Courtenay Shorter

Contents

Construction Updates	Pg.2
Runway Closures	Pg.2
Airport Diagram	Pg.3
Airport Operations Report	Pg.4 & 5



"Untitled, 2003" by artists Phillip Lamb and Susan Magilow.

The piece is located along the pedestrian walkway to the terminal on the third level of the parking garage. The piece is divided into 5 sections along the walkway and it features visuals representative of Texas.

For more information and updates about the Love Field Modernization Project (LFMP) please visit: <http://www.lovefieldmodernizationprogram.com/>

Want to get involved?

The Love Field Environmental Advisory Committee (LFEAC) meets once every quarter. Please join us for round-table discussion and updates!!!

Upcoming LFEAC Meetings:

- ◆ October 10, 2013
- ◆ January 9, 2014
- ◆ April 10, 2014

Construction Activities

Runway Safety Area (RSA)

The Runway Safety Area (RSA) project has now been completed.

Work continues on taxiways A, B, and D. As work continues along these taxiways, there will be some limitations on the access to the approach ends of RWY 13L/31R (Lemmon).

Taxiway D between Taxiway C and Taxiway P was closed Tuesday May 28, 2013 as work continues for the next phase of the Love Field Modernization Project (LFMP).

This phase of the project is expected to be completed in Spring of 2014 and it includes the demolition of Gates 4 through 15 of the west concourse and the baggage claim wing.

If you would like to learn more about the LFMP please visit:



http://www.dallas-lovefield.com/pdf/LFMP_Newsletter_0412.pdf

Runway Closures

Scheduled Runway Closures for Routine Maintenance

Runway 13L/31R (Lemmon) will be closed Saturday August 10, 2013 from 7:00 am until 3:00 pm

Ongoing Airfield Closures

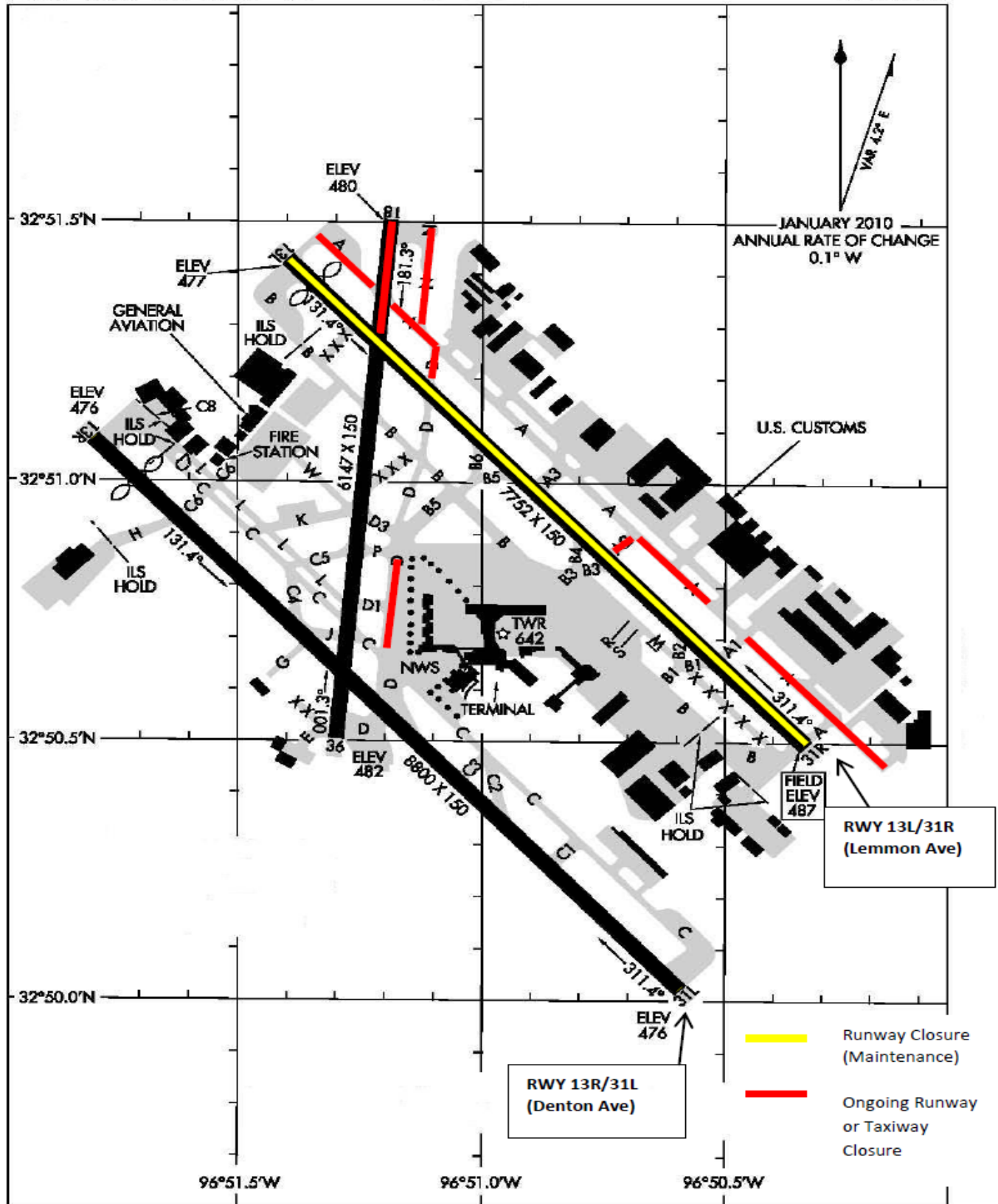
- ◆ RWY 18/36 to remain closed, but will be available for taxiing south of RWY 13L/31R.
- ◆ TWY A closed between 460ft west of TWY A1 and 260ft west of TWY A2 on May 9th for approximately 4 weeks.
- ◆ TWY A2 closed for approximately 4 weeks beginning May 9th.
- ◆ TWY D closed from TWY P to TWY C until March 2014.
- ◆ TWY A closed between TWY A1 and the approach end of 31R for 4 months
- ◆ **The following taxiways will remain closed until further notice:**
 - TWY A closed from TWY D to the approach end of RWY 13L.
 - TWY A closed 150ft SE at approach end of RWY 31R.
 - TWY C between C2 and D closed to aircraft with wingspan more than 118ft.
 - TWY D closed between RWY 13L/31R to TWY A.
 - TWY D1 closed.
 - TWY N closed.



**Please see the airport diagram on the next page for the locations of runways and taxiways.*

AIRPORT DIAGRAM

DALLAS-LOVE FIELD (DAL)
DALLAS, TEXAS



AIRPORT DIAGRAM

DALLAS, TEXAS
DALLAS-LOVE FIELD (DAL)

Airport Operations Report

Total Operations for the Week of July 28– August 3, 2013

13L / 31R (Lemmon)

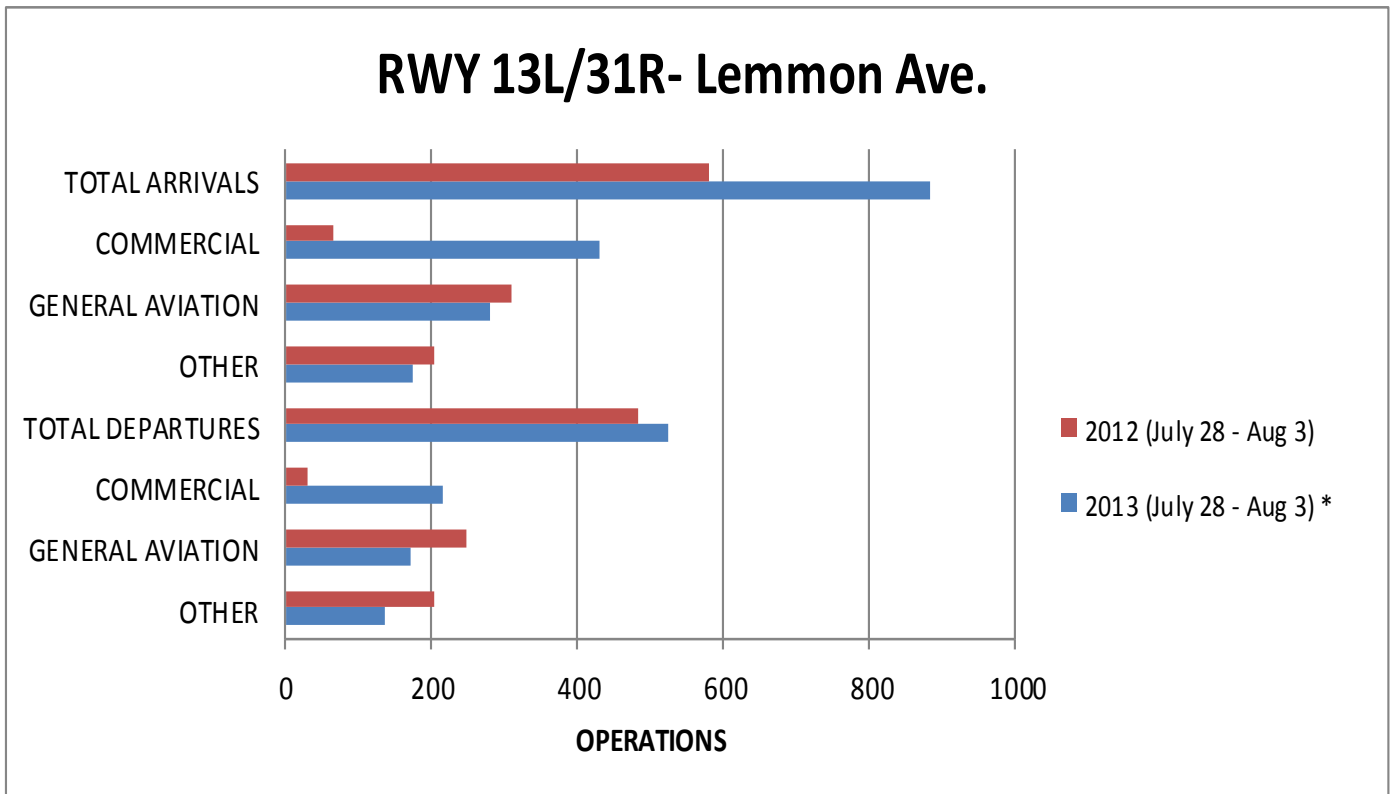
13R / 31L (Denton)

July 28–August 3		Avg per Day			Avg per Day
	Total	Avg per Day			
Arrivals	884	126		Arrivals	80
Commercial	430	61		Commercial	54
GA	279	40		GA	17
Other	175	25		Other	8
Departures	523	75		Departures	62
Commercial	217	31		Commercial	44
GA	170	24		GA	12
Other	136	19		Other	7

Total Arrivals for the week of July 28– August 3, 2013: 1557* Total Departures for the week of July 28- August 3, 2013: 1658*

*Total arrival and departure counts include operations that are listed as “unknown” in the system due to radar coverage that doesn't correlate them with a runway in the Noise and Operations Monitoring System.

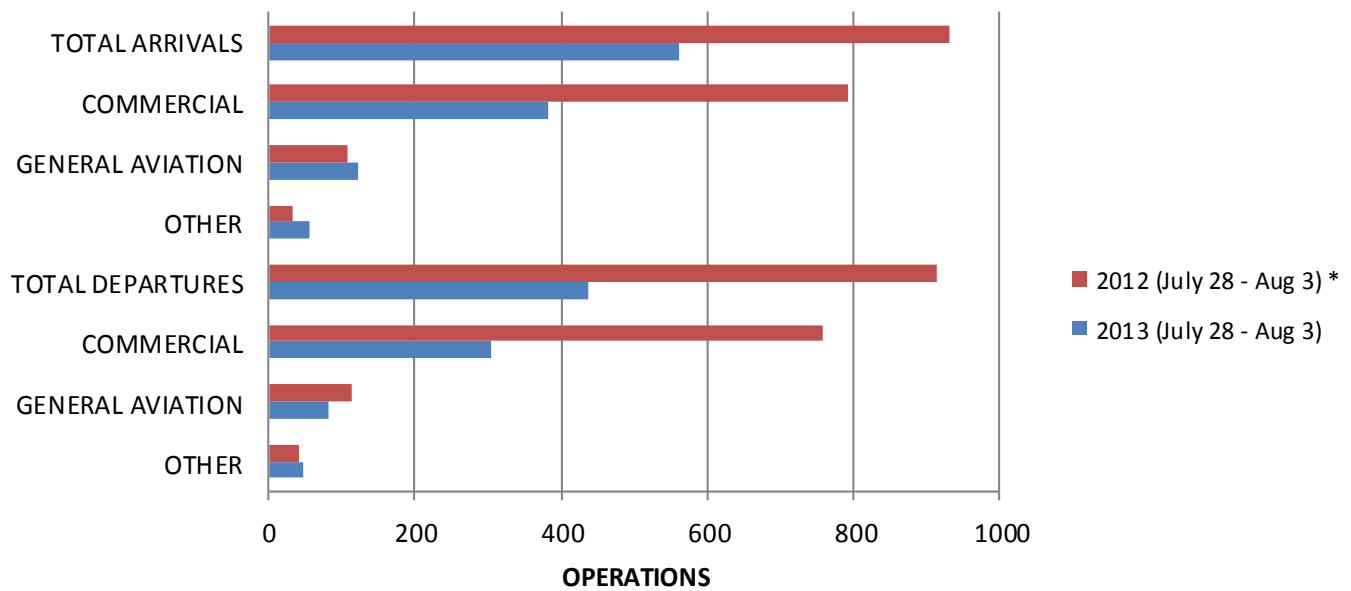
Annual Comparison



* Runway 13L/31R (Lemmon) was closed Saturday July 27, 2013 from 12:00 PM until 4:00 PM

Airport Operations Report (Continued)

RWY 13R/31L- Denton Rd.



* Runway 13R/31L (Denton) was closed Saturday July 28, 2012 at 7:00 PM until Sunday July 29, 2012 at 7:00 AM

* Runway 13R/31L (Denton) was closed Friday August 3, 2012 at 10:00 PM until Saturday August 4, 2012 at 5:00 AM

Community Weekly Update
August 10- August 16, 2013

Visit us at
www.dallas-lovefield.com/



For questions or concerns please
 contact:

Courtenay Shorter
 Aircraft Noise Coordinator
 City of Dallas-Department of
 Aviation
 Phone: 214-670-6673

