



**DALLAS LOVE FIELD**  
 Leading the **EVOLUTION** of the Airport Experience



*We can't wait for you to see what's in store.*

LOVE|EVOLUTION

**Community Weekly Update for August 17- August 23, 2013**

**A Love Note from Me to You...**

Dear Neighbors,

We are excited about the progress and changes that are taking place here at Dallas Love Field and we want you to be excited as well! If you are interested in some area that we are currently monitoring for our quarterly meetings of the LFEAC or if you have some particular interest in a time frame to be monitored, please let me know and I will try to accommodate that suggestion.

-Ms. Courtenay Shorter

<b>Contents</b>	
Construction Updates	Pg.2
Runway Closures	Pg.2
Airport Diagram	Pg.3
Airport Operations Report	Pg.4 & 5

**Want to get involved?**

*The Love Field Environmental Advisory Committee (LFEAC) meets once every quarter. Please join us for round-table discussion and updates!!!*

**Upcoming LFEAC Meetings:**

- ◆ October 10, 2013
- ◆ January 9, 2014
- ◆ April 10, 2014



*As passengers wait for their flights, they can tap into their artistic side by visiting the Love Field Art Gallery. Guest can view all of the art pieces featured at the airport and learn about their artists. The Love Field Art Gallery is located in the main terminal near the diamond concessions area.*

For more information and updates about the Love Field Modernization Project (LFMP) please visit: <http://www.lovefieldmodernizationprogram.com/>

## Construction Activities

### Runway Safety Area (RSA)

The Runway Safety Area (RSA) project has now been completed.

Work continues on taxiways A, B, and D. As work continues along these taxiways, there will be some limitations on the access to the approach ends of RWY 13L/31R (Lemmon).

Taxiway D between Taxiway C and Taxiway P was closed Tuesday May 28, 2013 as work continues for the next phase of the Love Field Modernization Project (LFMP).

This phase of the project is expected to be completed in Spring of 2014 and it includes the demolition of Gates 4 through 15 of the west concourse and the baggage claim wing.

If you would like to learn more about the LFMP please visit:



[http://www.dallas-lovefield.com/pdf/LFMP\\_Newsletter\\_0412.pdf](http://www.dallas-lovefield.com/pdf/LFMP_Newsletter_0412.pdf)

## Runway Closures

### Scheduled Runway Closures for Routine Maintenance

There are no scheduled runway closures for the upcoming week.



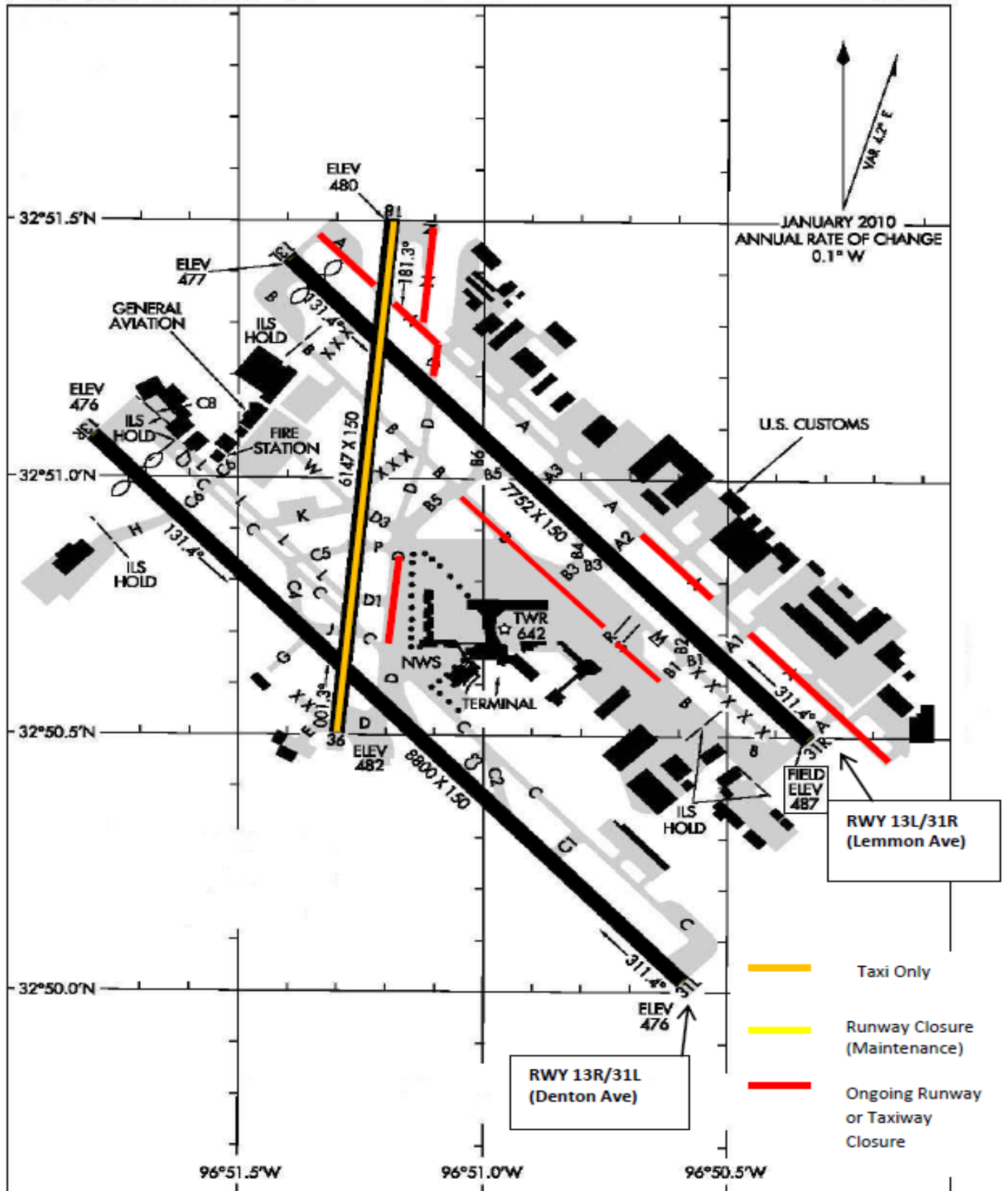
### Ongoing Airfield Closures

- ◆ RWY 18/36 closed, available for taxiing.
- ◆ TWY A closed between 460ft west of TWY A1 and 260ft west of TWY A2.
- ◆ TWY D closed from TWY P to TWY C until March 2014.
- ◆ TWY A closed between TWY A1 and the approach end of 31R for 4 months
- ◆ **The following taxiways will remain closed until further notice:**
  - TWY A closed from TWY D to the approach end of RWY 13L.
  - TWY A closed 150ft SE at approach end of RWY 31R.
  - TWY C between C2 and D closed to aircraft with wingspan more than 118ft.
  - TWY D closed between RWY 13L/31R to TWY A.
  - TWY D1 closed.
  - TWY N closed.

***\*Please see the airport diagram on the next page for the locations of runways and taxiways.***

# AIRPORT DIAGRAM

DALLAS-LOVE FIELD (DAL)  
DALLAS, TEXAS



# AIRPORT DIAGRAM

DALLAS, TEXAS  
DALLAS-LOVE FIELD (DAL)

# Airport Operations Report

Total Operations for the Week of August 4– August 10, 2013

13L / 31R (Lemmon)

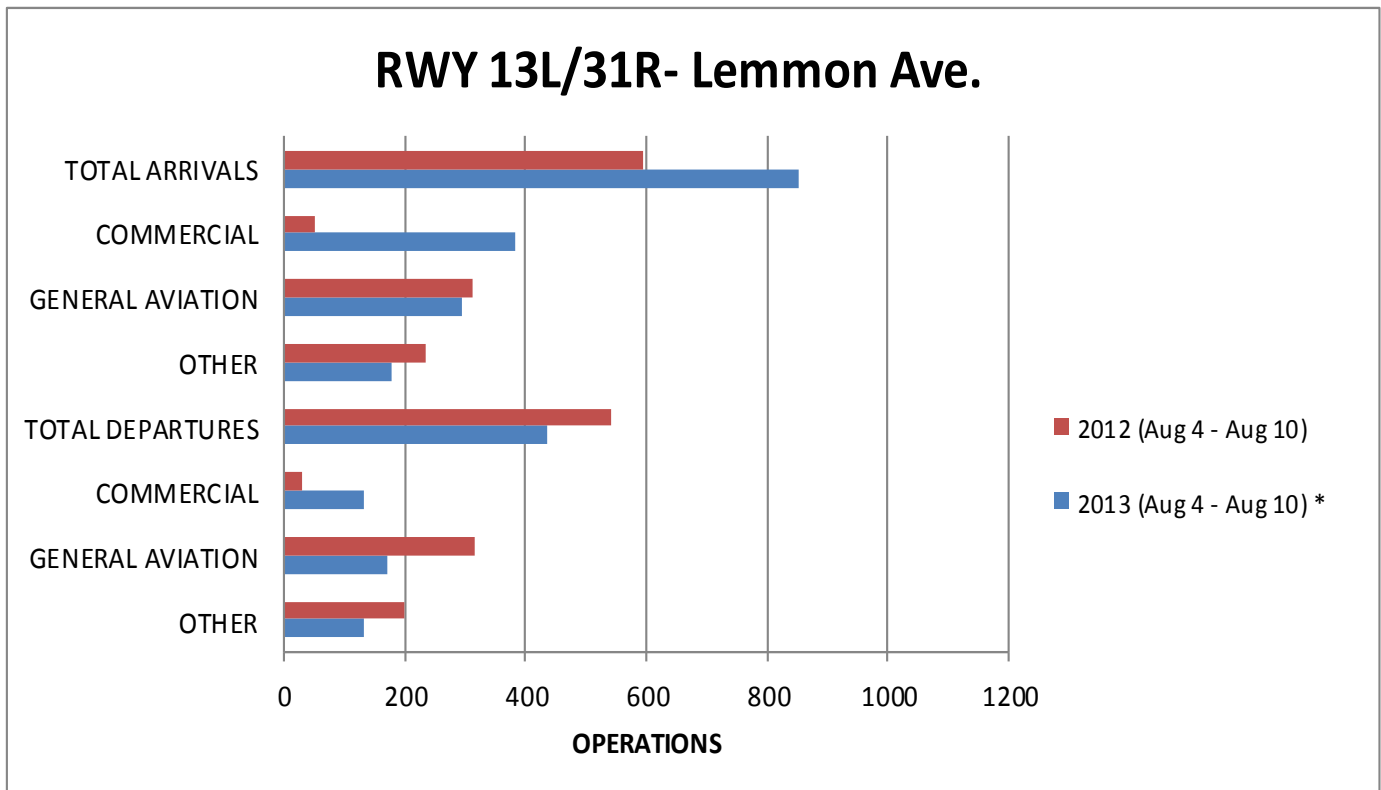
13R / 31L (Denton)

August 4–August 10	Total	Avg per Day			Total	Avg per Day
<b>Arrivals</b>	854	122		<b>Arrivals</b>	634	91
Commercial	382	55		Commercial	432	62
GA	294	42		GA	135	19
Other	178	25		Other	66	9
<b>Departures</b>	437	62		<b>Departures</b>	525	75
Commercial	133	19		Commercial	368	53
GA	172	25		GA	104	15
Other	132	19		Other	53	8

Total Arrivals for the week of August 4– August 10, 2013: 1619\* Total Departures for the week of August 4- August 10, 2013: 1670\*

\*Total arrival and departure counts include operations that are listed as “unknown” in the system due to radar coverage that doesn't correlate them with a runway in the Noise and Operations Monitoring System.

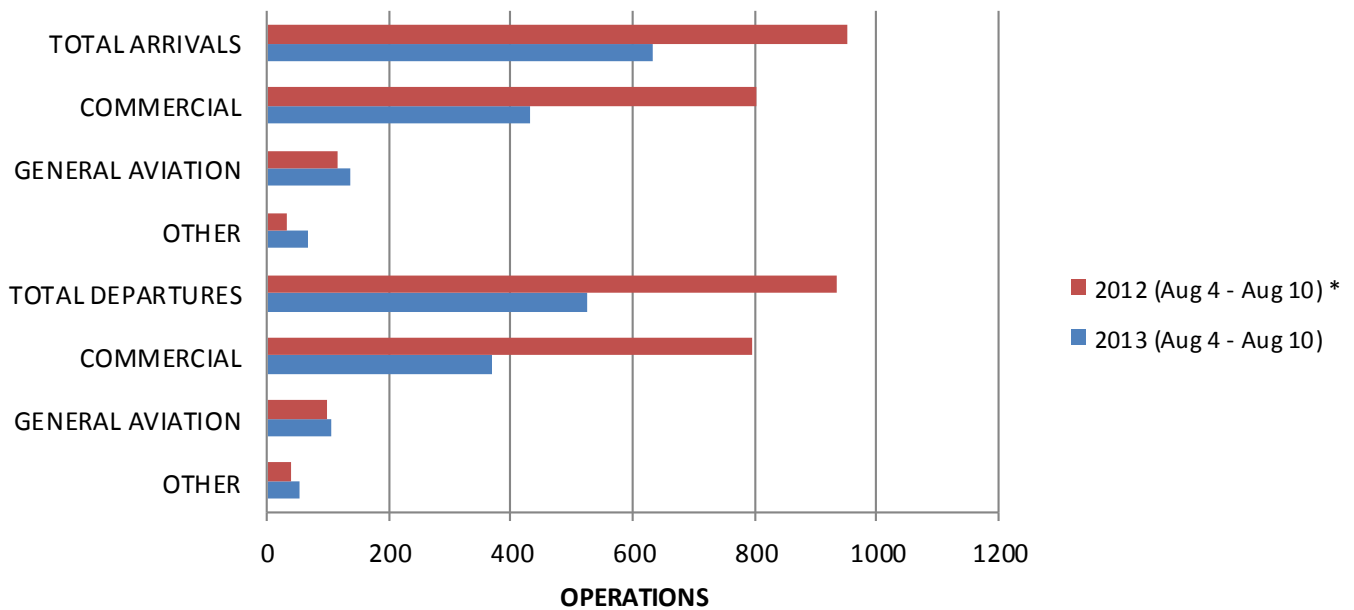
## Annual Comparison



\* Runway 13L/31R (Lemmon) was closed Saturday August 10, 2013 from 7:00 AM until 3:00 PM

# Airport Operations Report (Continued)

## RWY 13R/31L- Denton Rd.



\* Runway 13R/31L (Denton) was closed Friday August 10, 2012 at 11:00 PM until Saturday August 11, 2012 at 8:00 AM

**Community Weekly Update  
August 17- August 23, 2013**

Visit us at  
[www.dallas-lovefield.com/](http://www.dallas-lovefield.com/)



For questions or concerns please  
contact:

Courtenay Shorter  
Aircraft Noise Coordinator  
City of Dallas-Department of  
Aviation  
Phone: 214-670-6673

