



Community Weekly Update for December 7-December 13, 2013

A Love Note from Me to You...

Dear Neighbors,

Please be advised that there could be irregular operations or later than normal operations due to delays and cancellations because of the weather conditions this weekend. Please be safe on the roads if you must travel and monitor the weather conditions as they change.

The Dallas Stars will have two home games this week on Saturday December 7th and Tuesday December 10th. Please be advised that there could be an increase in general aviation traffic due to these games.

In an effort to serve you better, Dallas Love Field has opened a new Airport Communication Center (ACC) for your use. The ACC is currently staffed from 5am to 11pm to answer and direct your airport related concerns. Between the hours of 11pm and 5am, all calls will be transferred to the Airport Operations Communication Center. As many of you know, in addition to submitting noise concerns online or directly to me, we also have a noise hotline number. The current noise hotline number will eventually be replaced with the ACC number, 214-670-**LOVE** (5683) so please spread the information to your neighbors and friends!

We are excited about the progress and changes that are taking place here at Dallas Love Field and we want you to be excited as well! If you are interested in some area that we are currently monitoring for our quarterly meetings of the LFEAC or if you have some particular interest in a time frame to be monitored, please let me know and I will try to accommodate that suggestion.

-Ms. Courtenay Shorter

Contents

Construction Updates	Pg.2
Runway Closures	Pg.2
Airport Diagram	Pg.3
Airport Operations Report	Pg.4 & 5

Want to get involved?

The Love Field Environmental Advisory Committee (LFEAC) meets once every quarter. Please join us for round-table discussion and updates!!!

Upcoming LFEAC Meetings:

- ◆ January 9, 2014
- ◆ April 10, 2014
- ◆ July 10, 2014



Something for Everyone! Passengers can enjoy the Wii U Gaming Lounge until December 22nd. The lounge is located in the diamond concessions area of the main terminal and is open from 8am to 8pm daily.

For more information and updates about the Love Field Modernization Project (LFMP) please visit: <http://www.lovefieldmodernizationprogram.com/>

Construction Activities

Runway Safety Area (RSA)

The Runway Safety Area (RSA) project has now been completed.

Work continues on taxiways A, B, and D. As work continues along these taxiways, there will be some limitations on the access to the approach ends of RWY 13L/31R (Lemmon).

Taxiway D between Taxiway C and Taxiway P was closed Tuesday May 28, 2013 as work continues for the next phase of the Love Field Modernization Project (LFMP).

This phase of the project is expected to be completed in Spring of 2014 and it includes the demolition of Gates 4 through 15 of the west concourse and the baggage claim wing.

If you would like to learn more about the LFMP please visit:



http://www.dallas-lovefield.com/pdf/LFMP_Newsletter_0412.pdf

Runway Closures

Scheduled Runway Closures for Routine Maintenance

RWY 13L/31R (Lemmon) will be closed Saturday December 7, 2013 from 7:00am until 5:00pm.



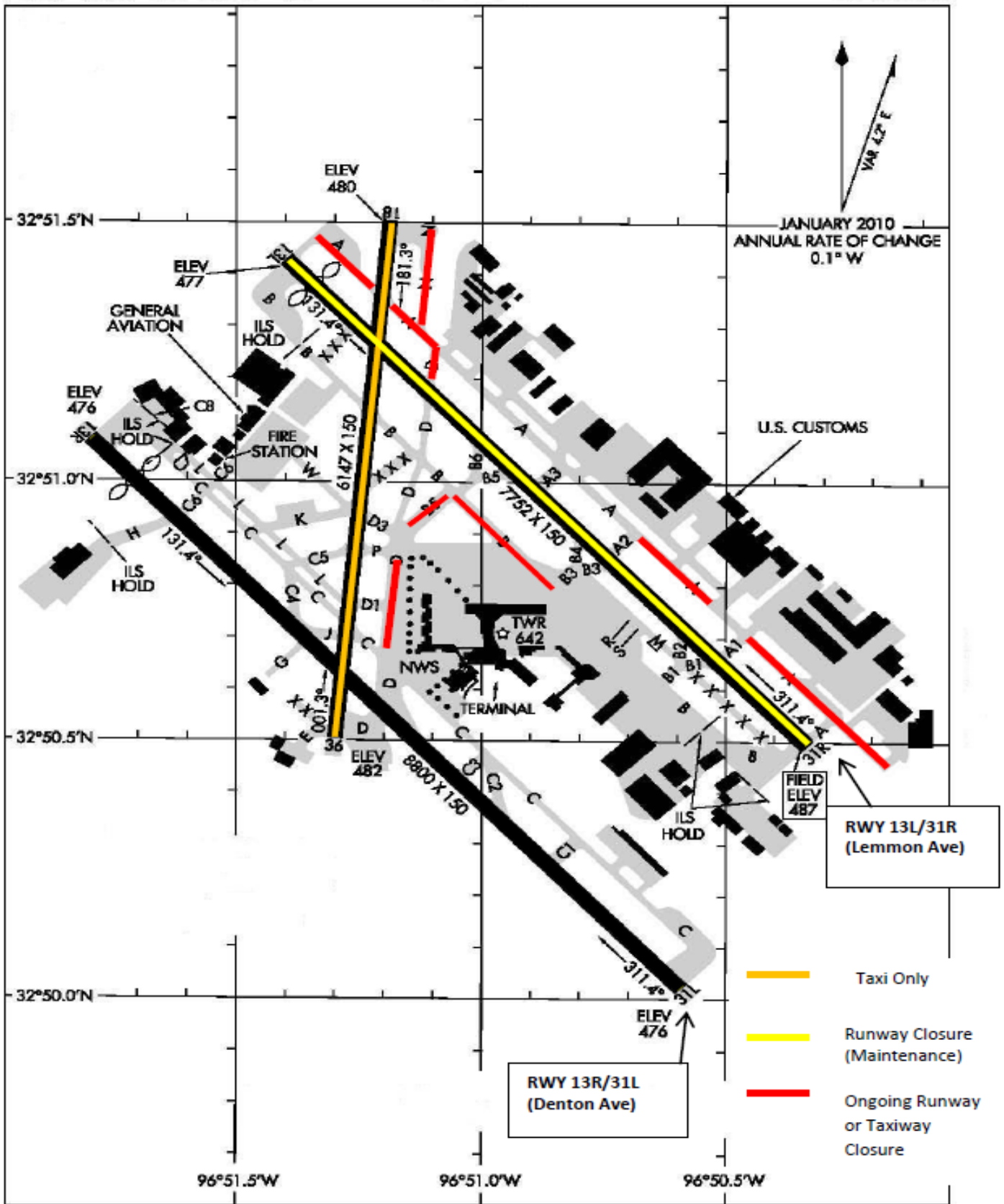
Ongoing Airfield Closures

- ◆ RWY 18/36 closed, available for taxiing.
- ◆ TWY B closed between TWY B3 and B5 Thursday December 12, 2013 at 11:00pm until Friday December 13 at 5:00am.
- ◆ TWY B5 closed between TWY D and TWY B Friday December 13, 2013 at 11:00pm until Friday December 13 at 5:00am.
- ◆ TWY A closed between 460ft west of TWY A1 and 260ft west of TWY A2.
- ◆ TWY D closed from TWY P to TWY C until March 2014.
- ◆ TWY A closed between TWY A1 and the approach end of 31R for 4 months
- ◆ **The following taxiways will remain closed until further notice:**
 - TWY A closed from TWY D to the approach end of RWY 13L.
 - TWY A closed 150ft SE at approach end of RWY 31R.
 - TWY C between C2 and D closed to aircraft with wingspan more than 118ft.
 - TWY D closed between RWY 13L/31R to TWY A.
 - TWY N closed.

**Please see the airport diagram on the next page for the locations of runways and taxiways.*

AIRPORT DIAGRAM

DALLAS-LOVE FIELD (DAL)
DALLAS, TEXAS



AIRPORT DIAGRAM

DALLAS, TEXAS
DALLAS-LOVE FIELD (DAL)

Airport Operations Report

Total Operations for the Week of November 24– November 30, 2013

13L / 31R (Lemmon)

13R / 31L (Denton)

November 24– November 30	Total	Avg per Day		Total	Avg per Day
Arrivals	892	127		Arrivals	57
Commercial	444	63		Commercial	36
GA	262	37		GA	12
Other**	186	27		Other**	8
Departures	621	89		Departures	46
Commercial	280	40		Commercial	33
GA	190	27		GA	9
Other**	151	22		Other**	4

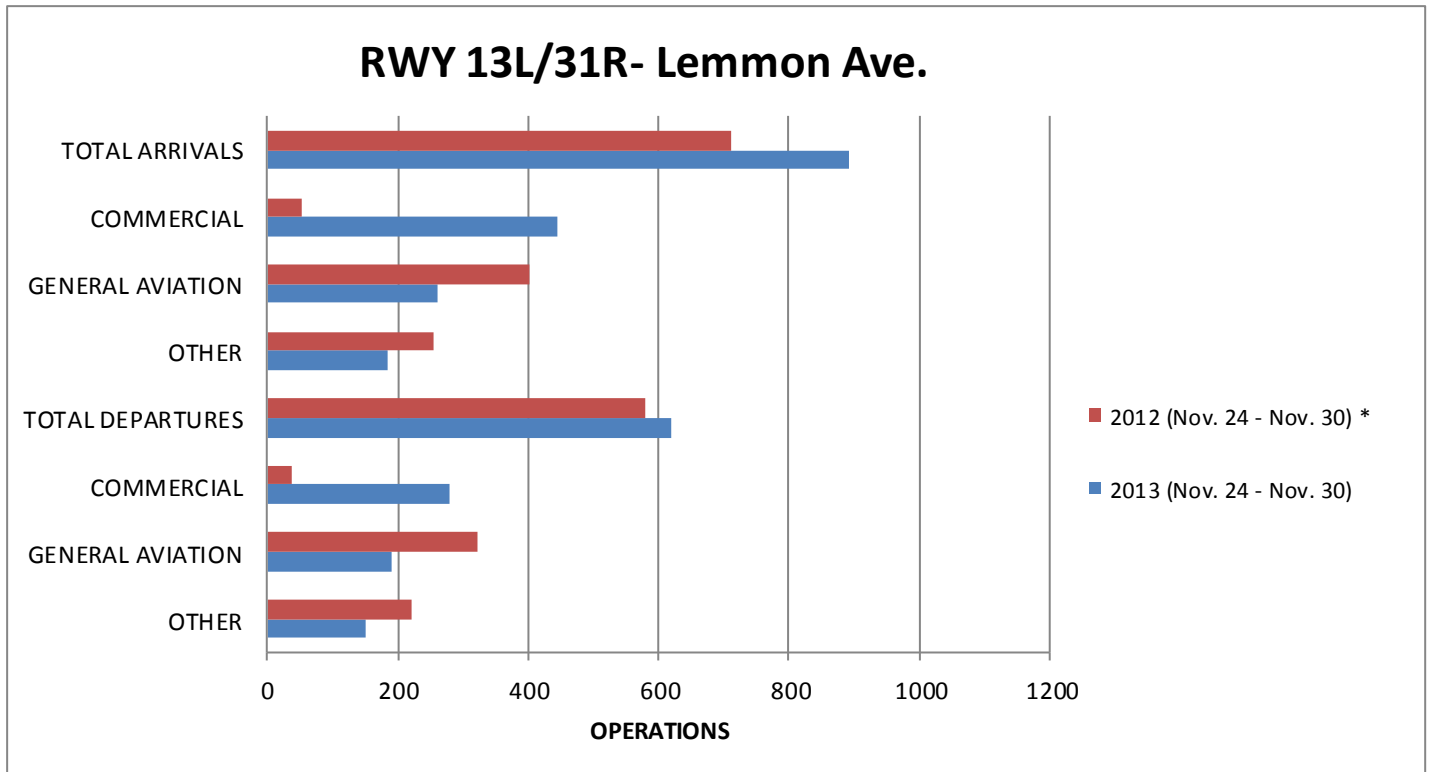
Total Arrivals for the week of November 24– November 30, 2013: 1308*

Total Departures for the week of November 24– November 30, 2013: 1345*

**Total arrival and departure counts include operations that are listed as "unknown" in the system due to radar coverage that doesn't correlate them with a runway in the Noise and Operations Monitoring System.*

***Aircraft classified as other include military operations, non-scheduled commercial operations such as charter flights/air taxi, and helicopter operations.*

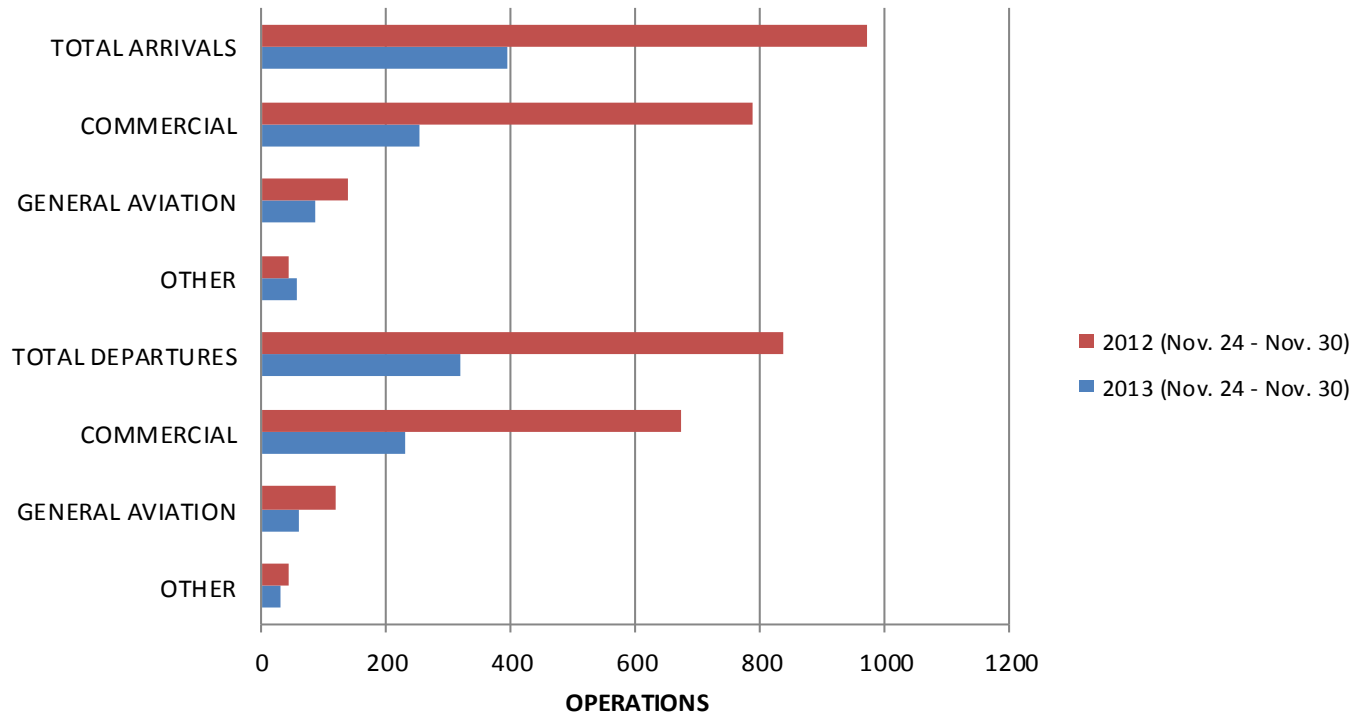
Annual Comparison



* RWY 13L/31R (Lemmon) was closed Friday November 30, 2012 at 10:00pm until Saturday December 1, 2012 at 5:00am.

Airport Operations Report (Continued)

RWY 13R/31L- Denton Rd.



**Community Weekly Update
December 7- December 13, 2013**

Visit us at
www.dallas-lovefield.com/



DALLAS LOVE FIELD
**AIRPORT
COMMUNICATION
CENTER**

ANSWERING ALL YOUR
QUESTIONS AT LOVE FIELD

EMAIL 214670LOVE@DALLASCITYHALL.COM
PHONE 214-670-LOVE (5683)

For questions or concerns please
contact:

Courtenay Shorter
Aircraft Noise Coordinator
City of Dallas-Department of
Aviation
Phone: 214-670-6673

