



**Community
Weekly Update
for
July 27-
August 2,
2013**

A Love Note from Me to You...

Dear Neighbors,

The nighttime preferential runway 13R/31L (Denton) will be closed tonight, Friday July 27, 2013 during the hours of the voluntary noise program for routine airfield maintenance. Please see the "Runway Closures" section on page 2 for more details.

There is a chance of thunderstorms in the forecast today. Please be advised that this could cause later than normal traffic due to delays or diversions.

We are excited about the progress and changes that are taking place here at Dallas Love Field and we want you to be excited as well! If you are interested in some area that we are currently monitoring for our quarterly meetings of the LFEAC or if you have some particular interest in a time frame to be monitored, please let me know and I will try to accommodate that suggestion.

-Ms. Courtenay Shorter

Contents

Construction Updates	Pg.2
Runway Closures	Pg.2
Airport Diagram	Pg.3
Airport Operations Report	Pg.4 & 5

Want to get involved?

The Love Field Environmental Advisory Committee (LFEAC) meets once every quarter. Please join us for round-table discussion and updates!!!

Upcoming LFEAC Meetings:

- ◆ October 10, 2013
- ◆ January 9, 2014
- ◆ April 10, 2014



We want you to know that we "LOVE" you every step of the way!

Photo above is taken in the Love's Landing area as you walk to parking garages A and B.

*For more information and updates about the Love Field Modernization Project (LFMP) please visit:
<http://www.lovefieldmodernizationprogram.com/>*

Construction Activities

Runway Safety Area (RSA)

The Runway Safety Area (RSA) project has now been completed.

Work continues on taxiways A, B, and D. As work continues along these taxiways, there will be some limitations on the access to the approach ends of RWY 13L/31R (Lemmon).

Taxiway D between Taxiway C and Taxiway P was closed Tuesday May 28, 2013 as work continues for the next phase of the Love Field Modernization Project (LFMP).

This phase of the project is expected to be completed in Spring of 2014 and it includes the demolition of Gates 4 through 15 of the west concourse and the baggage claim wing.

If you would like to learn more about the LFMP please visit:



http://www.dallas-lovefield.com/pdf/LFMP_Newsletter_0412.pdf

Runway Closures

Scheduled Runway Closures for Routine Maintenance

Runway 13R/31R (Denton) will be closed Friday July 26, 2013 at 11:00 PM until Saturday July 27, 2013 at 12:00 PM

Runway 13L/31R (Lemmon) will be closed Saturday July 27, 2013 from 12:00 PM until 4:00 PM

Ongoing Airfield Closures

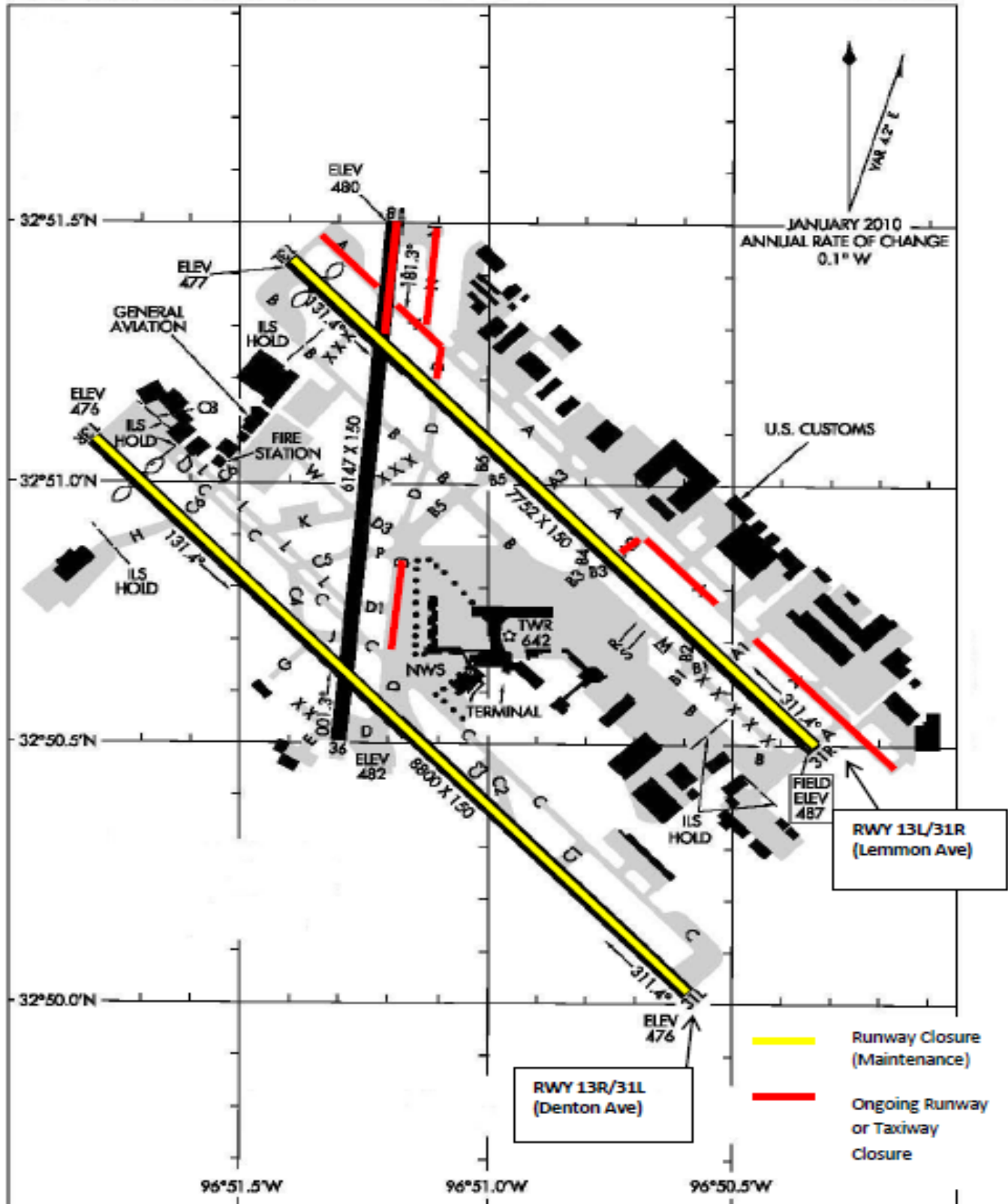
- ◆ RWY 18/36 to remain closed, but will be available for taxiing south of RWY 13L/31R.
- ◆ TWY A closed between 460ft west of TWY A1 and 260ft west of TWY A2 on May 9th for approximately 4 weeks.
- ◆ TWY A2 closed for approximately 4 weeks beginning May 9th.
- ◆ TWY D closed from TWY P to TWY C until March 2014.
- ◆ TWY A closed between TWY A1 and the approach end of 31R for 4 months
- ◆ **The following taxiways will remain closed until further notice:**
 - TWY A closed from TWY D to the approach end of RWY 13L.
 - TWY A closed 150ft SE at approach end of RWY 31R.
 - TWY C between C2 and D closed to aircraft with wingspan more than 118ft.
 - TWY D closed between RWY 13L/31R to TWY A.
 - TWY D1 closed.
 - TWY N closed.



****Please see the airport diagram on the next page for the locations of runways and taxiways.***

AIRPORT DIAGRAM

DALLAS-LOVE FIELD (DAL)
DALLAS, TEXAS



AIRPORT DIAGRAM

DALLAS, TEXAS
DALLAS-LOVE FIELD (DAL)

Airport Operations Report

Total Operations for the Week of July 14– July 20, 2013

13L / 31R (Lemmon)

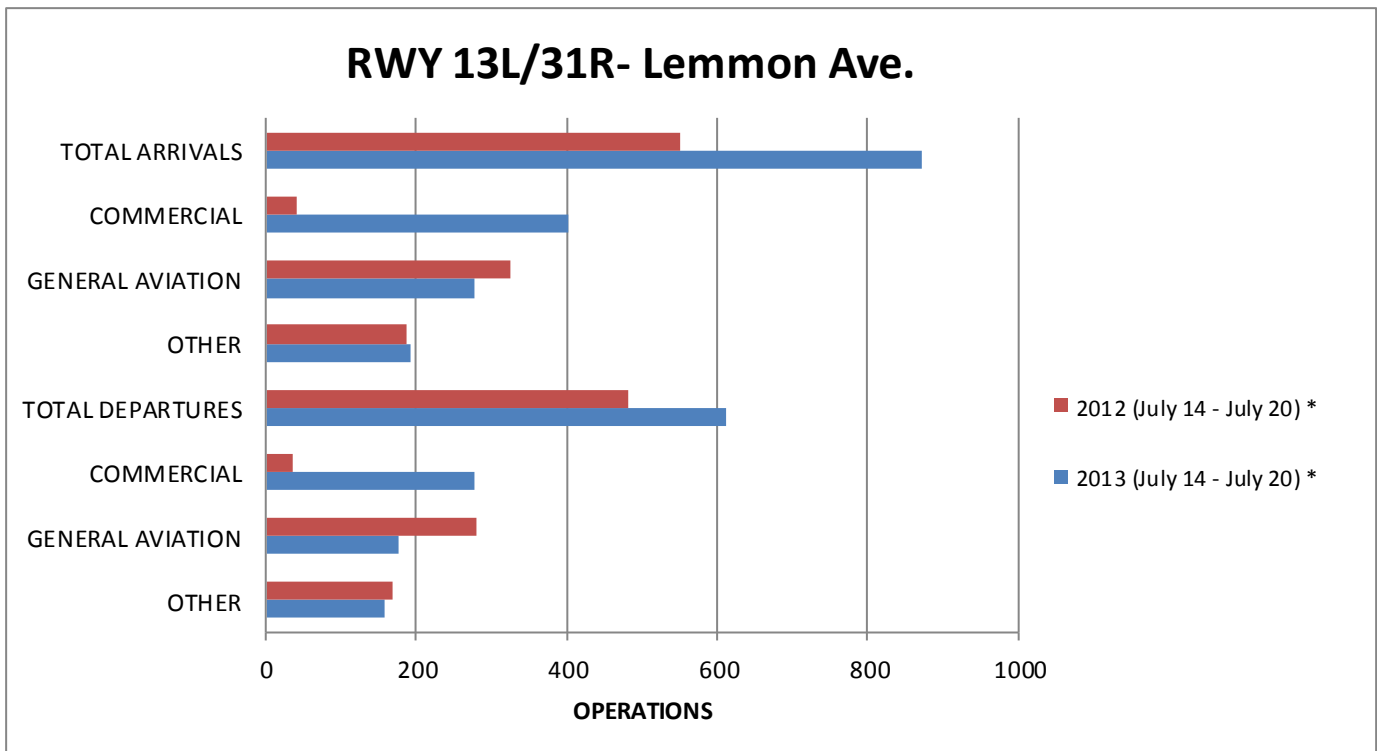
13R / 31L (Denton)

July 14–July 20	Total	Avg per Day		Total	Avg per Day
Arrivals	873	125		Arrivals	77
Commercial	403	58		Commercial	53
GA	277	40		GA	15
Other	193	28		Other	8
Departures	613	88		Departures	48
Commercial	278	40		Commercial	31
GA	177	25		GA	10
Other	158	23		Other	7

Total Arrivals for the week of July 7– July 13, 2013: 1515* Total Departures for the week of July 7–July 13, 2013: 1542*

*Total arrival and departure counts include operations that are listed as “unknown” in the system due to radar coverage that doesn't correlate them with a runway in the Noise and Operations Monitoring System.

Annual Comparison

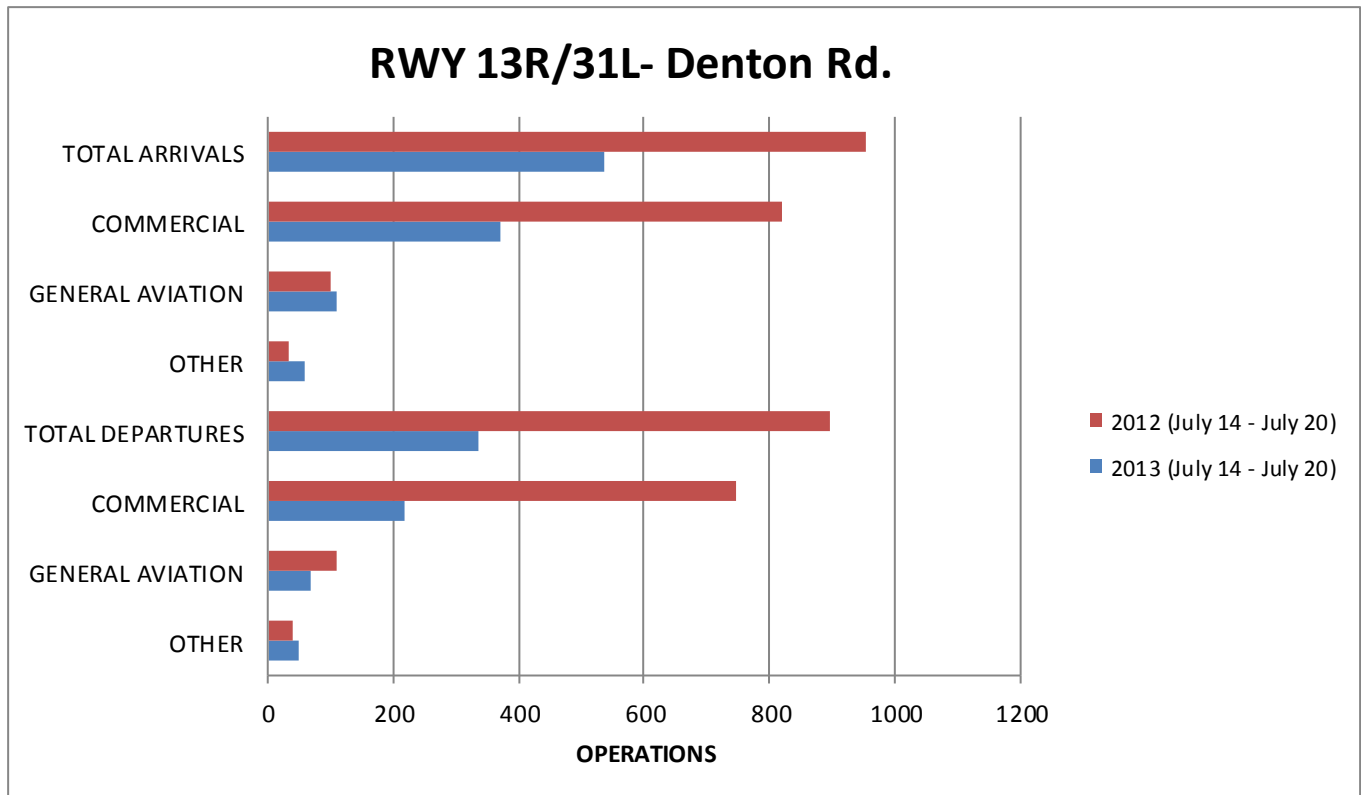


* RWY 13L/31R (Lemmon) was closed Thursday July 19, 2012 at 10:00 p.m. until Friday July 20, 2012 at 5:00 a.m.

* RWY 13L/31R (Lemmon) was closed Friday July 20, 2012 at 10:00 p.m. until Saturday July 21, 2012 at 5:00 a.m.

* RWY 13L/31R (Lemmon) was closed Saturday July 20, 2013 from 7:00 a.m. until 2:00 p.m.

Airport Operations Report (Continued)



**Community Weekly Update
July 27- August 2, 2013**

Visit us at
www.dallas-lovefield.com/



For questions or concerns please
contact:

Courtenay Shorter
Aircraft Noise Coordinator
City of Dallas-Department of
Aviation
Phone: 214-670-6673

