

Dallas Love Field Community Weekly Update



IN THIS ISSUE

A Love Note from Me to You...

by Ms. Courtenay Shorter

Important Announcement

Beginning next week, your weekly updates will be sent by Mr. Kevin Keith who will be the new acting Noise Coordinator for Aviation. I have accepted a new position within the City of Dallas and my last day at Aviation will be Tuesday June 9, 2015.

It has been my pleasure working with each of you over the last three years.

Emails sent directly to me may be delayed as I will be forwarding them to Kevin. If you need to email Kevin directly his email address is kevin.keith@dallascityhall.com.

You may still submit noise complaints to the Department of Aviation through the PublicVue portal on the Love Field website at www.dallas-lovefield.com and clicking the "Aircraft Noise Complaints" button on the right side of the screen. You may also submit

complaints via the ACC at 214-670-LOVE (5683). The Airport Communications Center (ACC) is staffed 24 hours a day to direct your airport related concerns.

Please help spread the word to members of your communities concerning the change in staff.



Construction Updates

Page 2

Runway Closures

Page 2

Airport Diagram

Page 3

Airport Operations Report

Pages 4-5

Upcoming LFEAC Meetings...

Thursday July 9, 2015

Thursday October 8, 2015

Thursday January 14, 2016

Construction Updates



Runway Closures

Scheduled Runway Closures for Routine Maintenance

All closures will be coordinated through Airport Operations and will be permitted based on weather and operational impact.

- ❖ Runway 13R/31L (Denton) will be closed Sunday June 7th at 11:30pm until Monday June 8th at 5:30am for airfield maintenance.
- ❖ Runway 13L/31R (Lemmon) will be closed Wednesday June 10th at 11:30pm until Thursday June 11th at 5:30am for airfield maintenance.

Scheduled Taxiway Closures for Routine Maintenance

- ❖ Sunday June 7th at 11:00pm – Monday June 8th at 5:30am: Runway 18/36 between Taxiway D1 and Runway 13R/31L, Taxiway C between Taxiway D and C4, and Taxiway J closed for boring/surveying operations.
- ❖ Beginning Sunday June 7th at 11:00pm for +/-60 Days: Taxiway B between Taxiway B1 and R (B1 and R will be open and available for taxi) closed for Airfield Maintenance to remove taxiway markings.
- ❖ Mon/June 8th 2300 – Tues/June 9th 0530: Taxiway A2 closed and Taxiway A between Taxiway A2 and A3 closed for Airfield Maintenance painting taxiway markings.
- ❖ Tues/June 9th 2300 – Wed/June 10th 0530: Taxiway A between Taxiway A3 and D closed for Airfield Maintenance painting taxiway markings.
- ❖ Thursday June 11th at 11:30pm – Friday June 12th 5:30am: Taxiway L between Taxiway C7 and C8 closed for Airfield Maintenance pavement repairs.

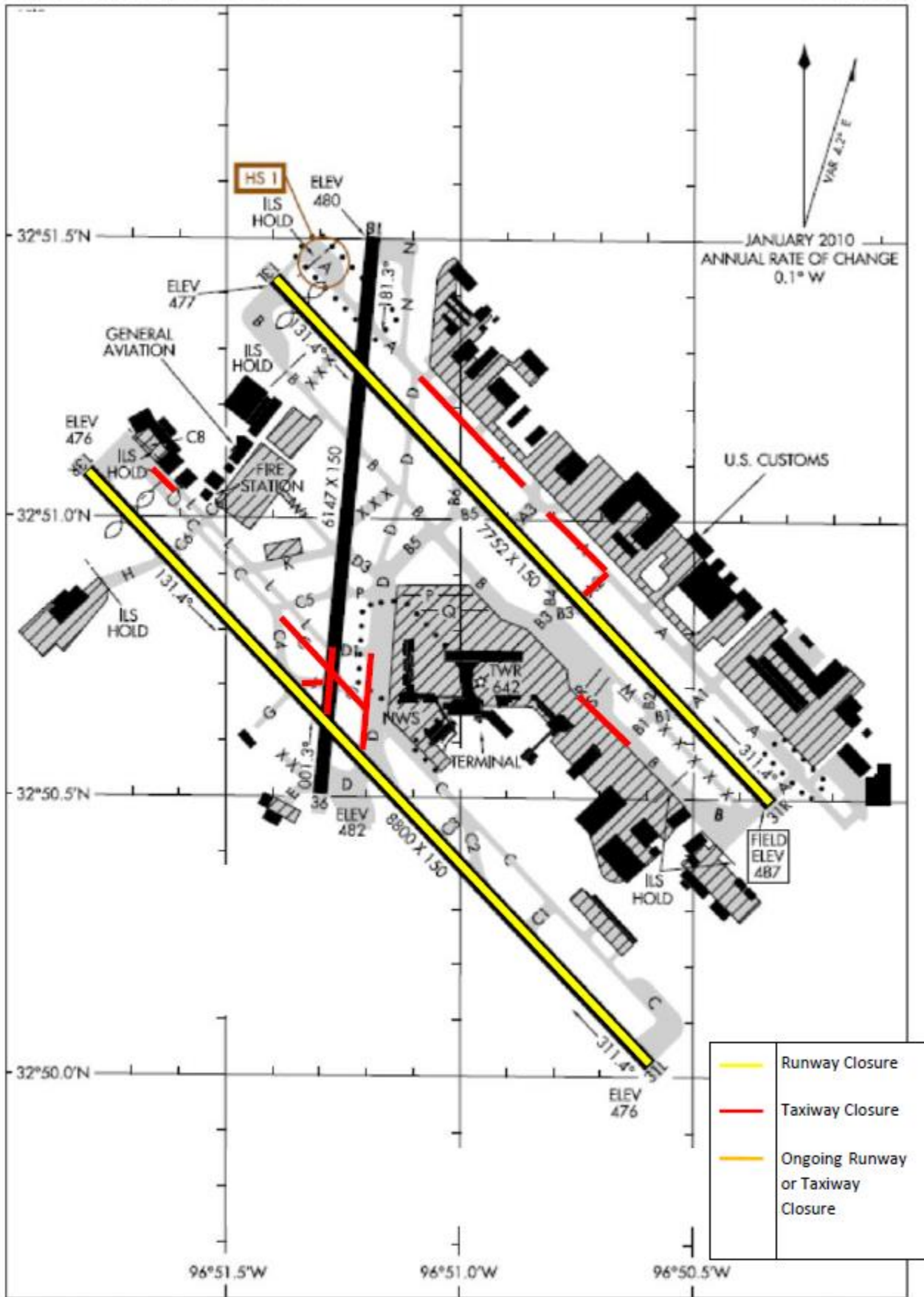
Ongoing Airfield Closures

The following taxiways will remain closed until further notice:

- ❖ Taxiway D closed lighted and barricaded between TWY D1 and RWY 13R/31L

* Please see the airport diagram on the next page for locations of runways and taxiways.

14093 **AIRPORT DIAGRAM** DALLAS-LOVE FIELD (DAL) DALLAS, TEXAS



AIRPORT DIAGRAM
14093

DALLAS, TEXAS
DALLAS-LOVE FIELD (DAL)

Airport Operations Report

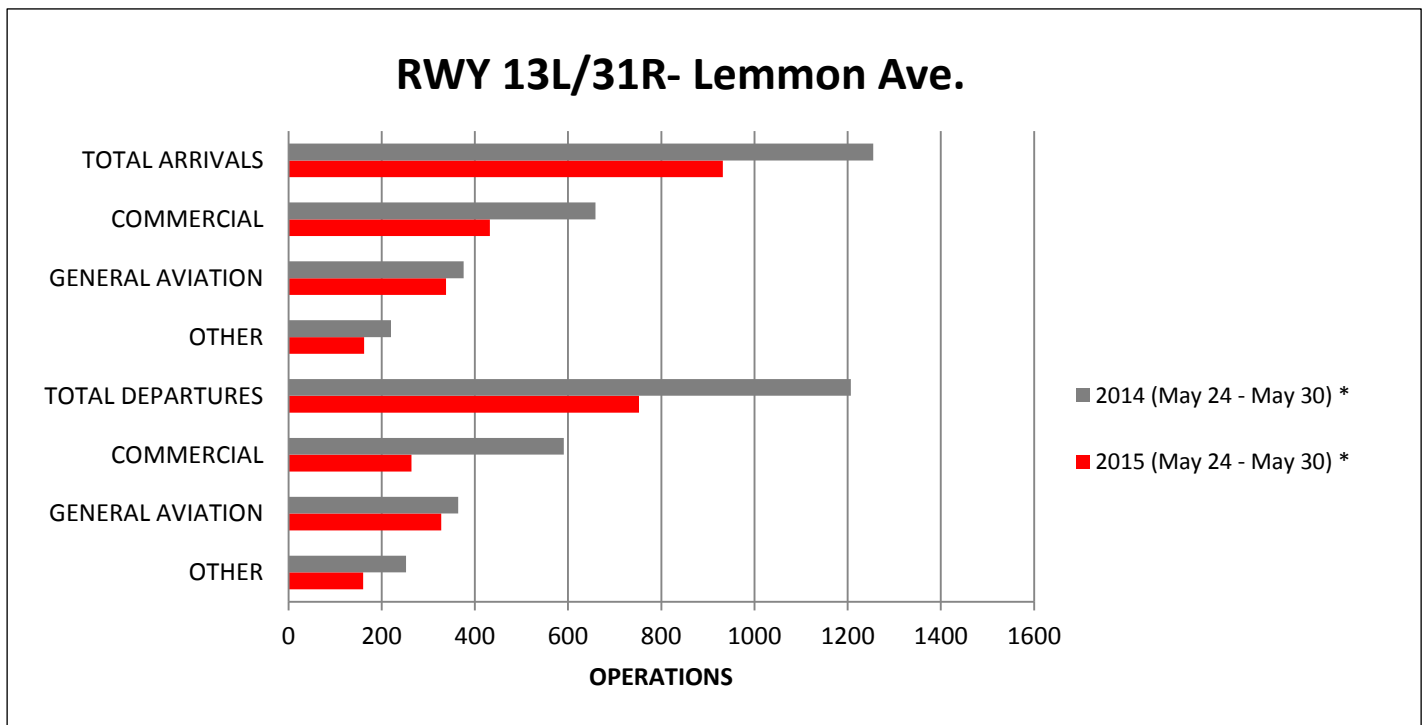
Total Operations for the Week of May 24, 2015– May 30, 2015

| | 13L/31R (Lemmon) | | | 13R/31L (Denton) | |
|-------------------|------------------|-----|-------------------|------------------|-----|
| May 24– May 30 | | | | | |
| Arrivals | 932 | 133 | Arrivals | 915 | 131 |
| Commerical | 432 | 62 | Commerical | 751 | 107 |
| GA | 338 | 48 | GA | 118 | 17 |
| Other | 162 | 23 | Other | 44 | 6 |
| Departures | 752 | 107 | Departures | 1094 | 156 |
| Commerical | 264 | 38 | Commerical | 914 | 131 |
| GA | 328 | 47 | GA | 113 | 16 |
| Other | 160 | 23 | Other | 66 | 9 |

Total Arrivals for the week of May 24, 2015– May 30, 2015: 1863*
 Total Departures for the week of May 24, 2015– May 30, 2015: 1872*

*Total arrival and departure counts include operations that are listed as “unknown” in the system due to radar coverage that doesn't correlate them with a runway in the Noise and Operations Monitoring System.

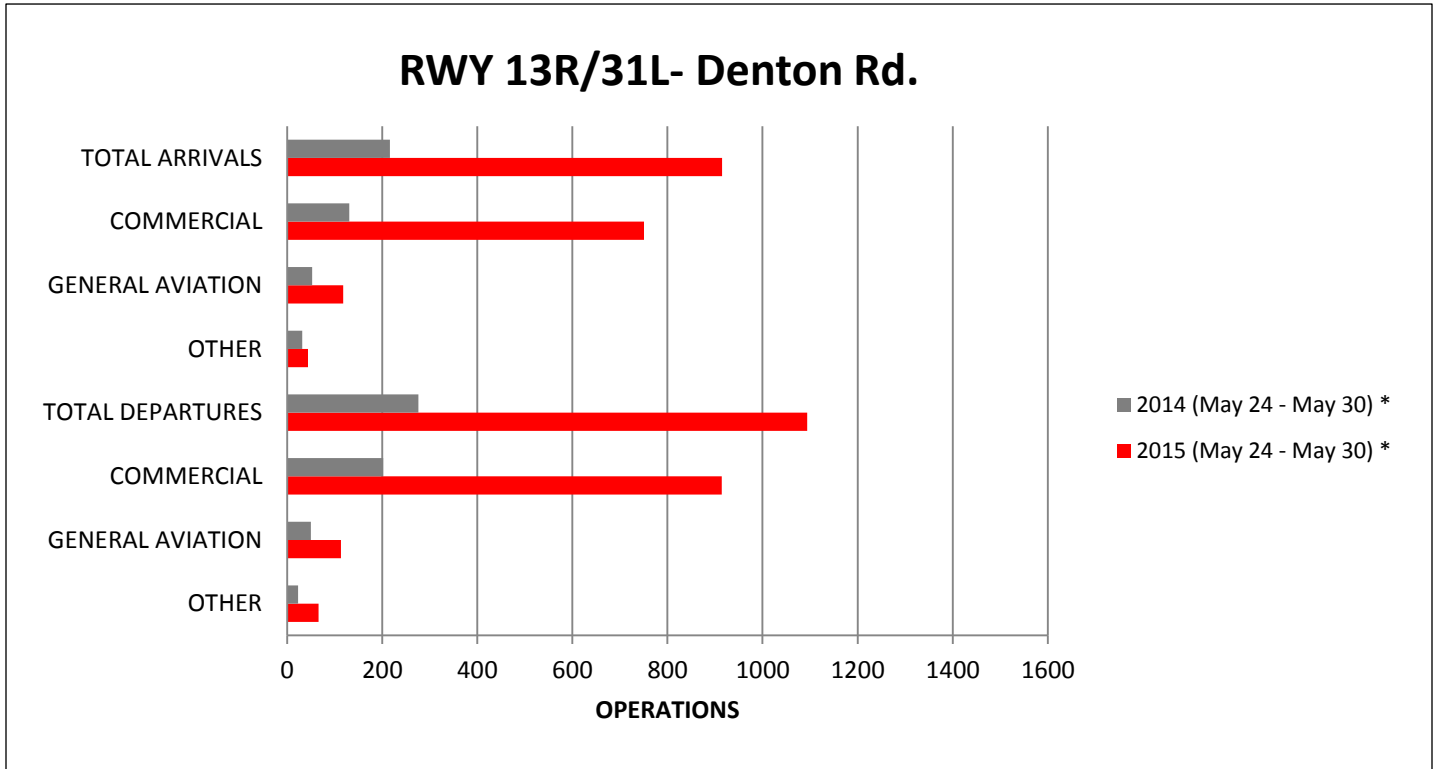
**Aircraft classified as other include military operations, non-scheduled commercial operations such as charter flights/air taxi, and helicopter operations.



- RWY 13L/31R closed Monday May 26, 2014 at 11:00pm until Tuesday May 27, 2014 at 5:30am.
- RWY 13L/31R closed Wednesday May 27, 2015 at 11:00pm until Thursday May 28, 2015 at 5:30am.

Airport Operations Report

Total Operations for the Week of May 24, 2015– May 30, 2015



- RWY 13R/31L closed Tuesday May 27, 2014 at 7:00am until July 9, 2014.
- RWY 13R/31L closed Monday May 25, 2015 at 11:00pm until Tuesday May 26, 2015 at 5:30am.
- RWY 13R/31L closed Sunday May 31, 2015 at 11:30pm until Monday June 1, 2015 at 5:30am.

Dallas Love Field

8008 Cedar Springs Rd. LB 16

Dallas, Texas 75235

For questions or concerns please contact:

Courtenay Shorter

Aircraft Noise Coordinator

214-670-6673

courtenay.shorter@dallascityhall.com



DALLAS LOVE FIELD
AIRPORT
COMMUNICATION
CENTER

ANSWERING ALL YOUR
QUESTIONS AT LOVE FIELD

EMAIL 214670LOVE@DALLASCITYHALL.COM
PHONE 214-670-LOVE (5683)

In an effort to serve you better, Dallas Love Field has opened the Airport Communications Center (ACC) for your use. The ACC is staffed 24 hours a day to direct your airport related concerns. If you are submitting an aircraft noise complaint please call the ACC at 214-670-LOVE (5683). Complaints may also be submitted through the airport's aircraft noise and operations portal, PublicVue. To submit complaints through the PublicVue module, please visit www.dallas-lovefield.com and click on "Aircraft Noise Complaints".