



**Community Weekly Update for November 16- November 22, 2013**

**A Love Note from Me to You...**

Dear Neighbors,

The Dallas Mavericks will have three home games this week on Monday November 18th, Wednesday November 20th and Friday November 22nd. The Dallas Stars will also have one home game this week on Thursday November 21st. Please be advised that there could be an increase in general aviation traffic due to these games.

In an effort to serve you better, Dallas Love Field has opened a new Airport Communication Center (ACC) for your use. The ACC is currently staffed from 5am to 11pm to answer and direct your airport related concerns. Between the hours of 11pm and 5am, all calls will be transferred to the Airport Operations Communication Center. As many of you know, in addition to submitting noise concerns online or directly to me, we also have a noise hotline number. The current noise hotline number will eventually be replaced with the ACC number, 214-670-**LOVE** (5683) so please spread the information to your neighbors and friends!

We are excited about the progress and changes that are taking place here at Dallas Love Field and we want you to be excited as well! If you are interested in some area that we are currently monitoring for our quarterly meetings of the LFEAC or if you have some particular interest in a time frame to be monitored, please let me know and I will try to accommodate that suggestion.

-Ms. Courtenay Shorter

<b>Contents</b>	
Construction Updates	Pg.2
Runway Closures	Pg.2
Airport Diagram	Pg.3
Airport Operations Report	Pg.4 & 5

**Want to get involved?**

*The Love Field Environmental Advisory Committee (LFEAC) meets once every quarter. Please join us for round-table discussion and updates!!!*

**Upcoming LFEAC Meetings:**

- ◆ January 9, 2014
- ◆ April 10, 2014
- ◆ July 10, 2014



*"Spirit of Flight" by artist Charles Umlaf.*

*The art piece pictured above is a part of the permanent artwork of the Love Field Art Program. The piece is located in Howard Megrady Circle in front of the parking garage.*

*For more information and updates about the Love Field Modernization Project (LFMP) please visit:*

## Construction Activities

### Runway Safety Area (RSA)

The Runway Safety Area (RSA) project has now been completed.

Work continues on taxiways A, B, and D. As work continues along these taxiways, there will be some limitations on the access to the approach ends of RWY 13L/31R (Lemmon).

Taxiway D between Taxiway C and Taxiway P was closed Tuesday May 28, 2013 as work continues for the next phase of the Love Field Modernization Project (LFMP).

This phase of the project is expected to be completed in Spring of 2014 and it includes the demolition of Gates 4 through 15 of the west concourse and the baggage claim wing.

If you would like to learn more about the LFMP please visit:



[http://www.dallas-lovefield.com/pdf/LFMP\\_Newsletter\\_0412.pdf](http://www.dallas-lovefield.com/pdf/LFMP_Newsletter_0412.pdf)

## Runway Closures

### Scheduled Runway Closures for Routine Maintenance

RWY 13L/31R (Lemmon) will be closed Saturday November 16, 2013 from 7:00am until 5:00pm.



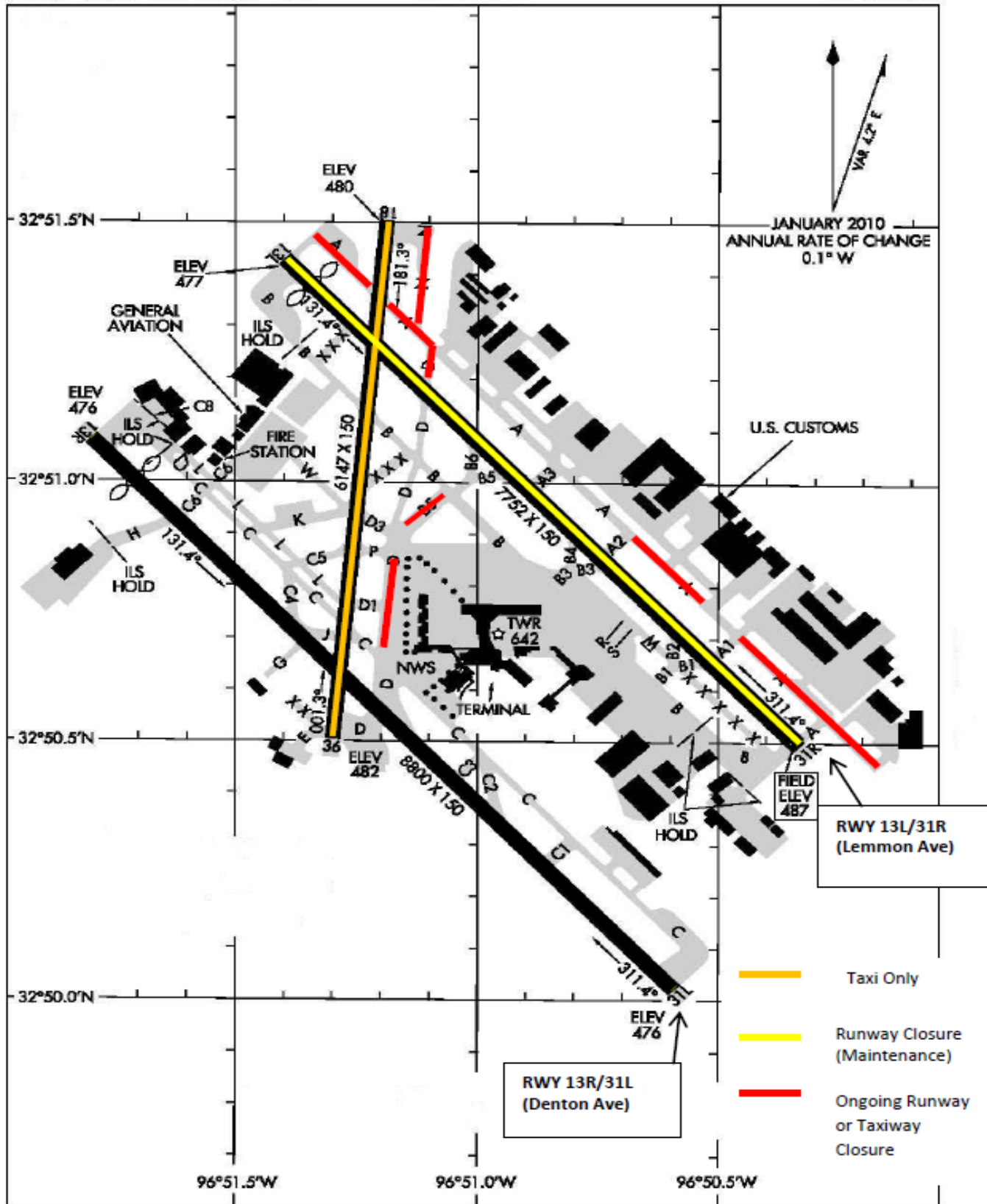
### Ongoing Airfield Closures

- ◆ TWY A3 and B2 will be closed Saturday November 16, 2013 from 7:00am until 5:00pm
- ◆ TWY B will be closed from Taxiway P to TWY B5 nightly Sunday November 17, 2013 through Wednesday November 20, 2013 from 10:00pm to 5:00am.
- ◆ TWY B5 to be closed between TWY B and D nightly Monday November 18, 2013 through Thursday November 21, 2013 from 10:00pm to 5:00am
- ◆ RWY 18/36 closed, available for taxiing.
- ◆ TWY A closed between 460ft west of TWY A1 and 260ft west of TWY A2.
- ◆ TWY D closed from TWY P to TWY C until March 2014.
- ◆ TWY A closed between TWY A1 and the approach end of 31R for 4 months
- ◆ **The following taxiways will remain closed until further notice:**
  - TWY A closed from TWY D to the approach end of RWY 13L.
  - TWY A closed 150ft SE at approach end of RWY 31R.
  - TWY C between C2 and D closed to aircraft with wingspan more than 118ft.
  - TWY D closed between RWY 13L/31R to TWY A.
  - TWY N closed.

*\*Please see the airport diagram on the next page for the locations of runways and taxiways.*

# AIRPORT DIAGRAM

DALLAS-LOVE FIELD (DAL)  
DALLAS, TEXAS



# AIRPORT DIAGRAM

DALLAS, TEXAS  
DALLAS-LOVE FIELD (DAL)

# Airport Operations Report

Total Operations for the Week of November 3– November 9, 2013

13L / 31R (Lemmon)

13R / 31L (Denton)

November 3–November 9	Total	Avg per Day		Total	Avg per Day
<b>Arrivals</b>	770	110		<b>Arrivals</b>	70
Commercial	349	50		Commercial	42
GA	264	38		GA	19
Other**	157	22		Other**	9
<b>Departures</b>	390	56		<b>Departures</b>	53
Commercial	127	18		Commercial	37
GA	146	21		GA	10
Other**	117	17		Other**	6

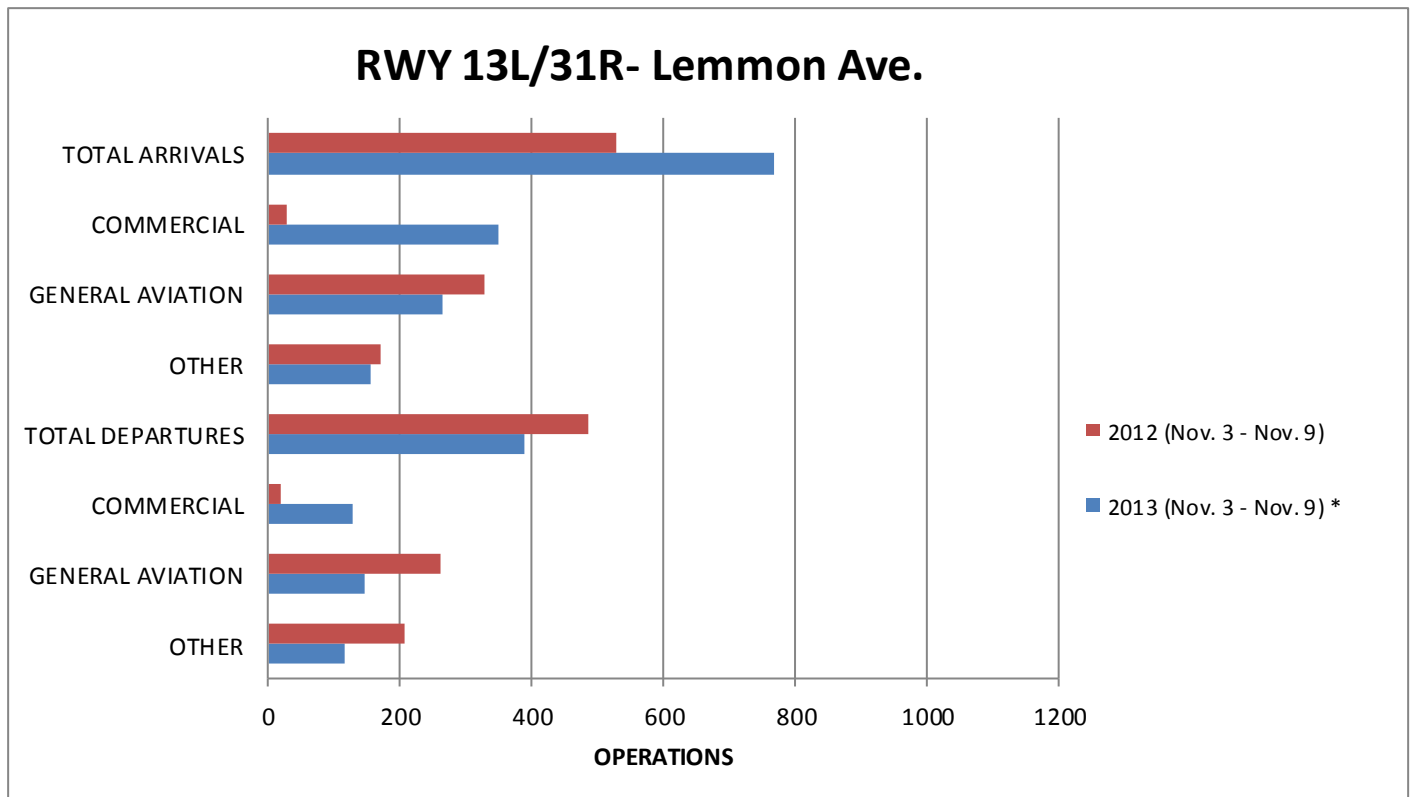
**Total Arrivals for the week of November 3– November 9, 2013: 1293\***

**Total Departures for the week of November 3– November 9, 2013: 1333\***

*\*Total arrival and departure counts include operations that are listed as "unknown" in the system due to radar coverage that doesn't correlate them with a runway in the Noise and Operations Monitoring System.*

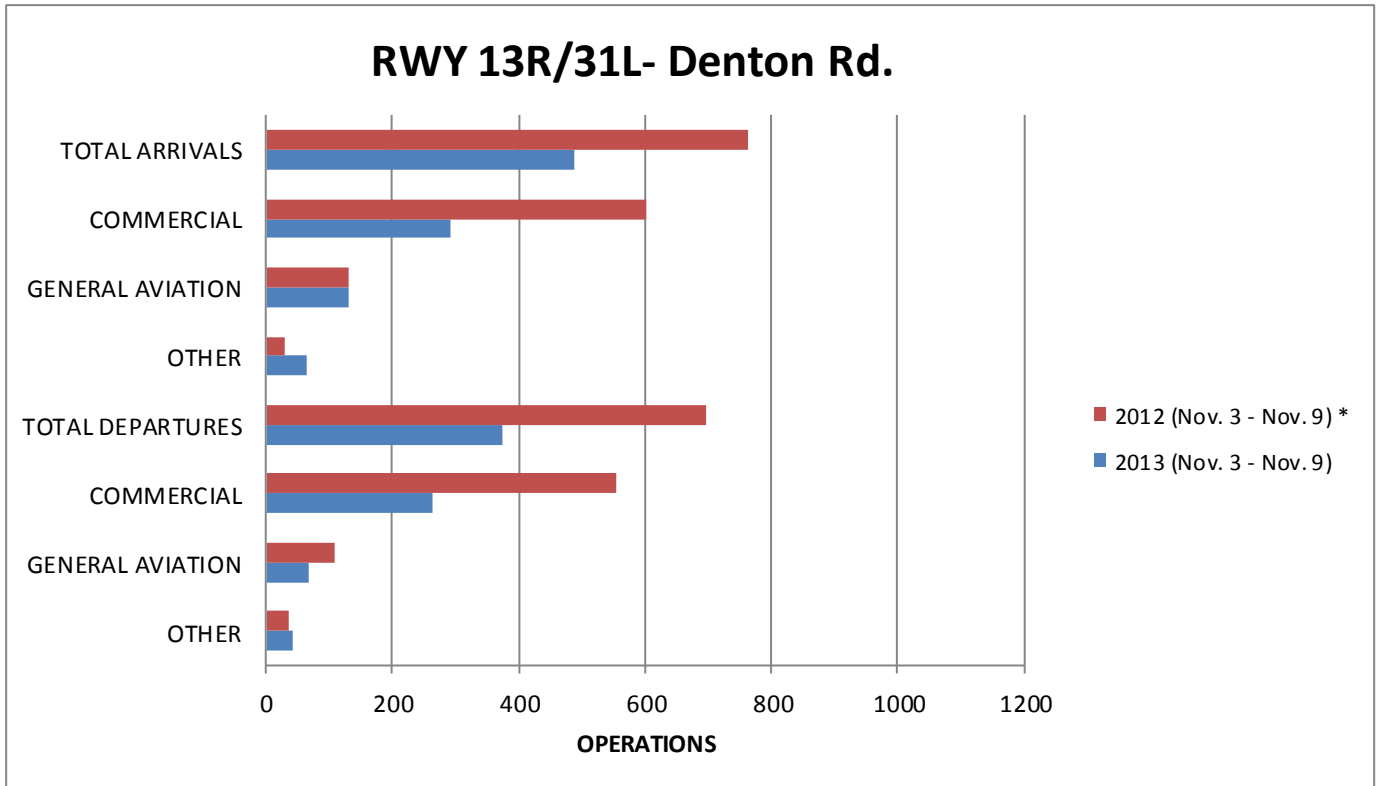
*\*\*Aircraft classified as other include military operations, non-scheduled commercial operations such as charter flights/air taxi, and helicopter operations.*

## Annual Comparison



\* RWY 13L/31R (Lemmon) was closed Saturday November 9, 2013 from 7:00am until 5:00pm.

# Airport Operations Report (Continued)



\* RWY 13R/31L (Denton) was closed Thursday November 8, 2012 at 10:00pm until Friday November 9, 2012 at 5:00am.

**Community Weekly Update**  
**November 16- November 22, 2013**

Visit us at  
[www.dallas-lovefield.com/](http://www.dallas-lovefield.com/)



DALLAS LOVE FIELD  
**AIRPORT  
 COMMUNICATION  
 CENTER**

ANSWERING ALL YOUR  
 QUESTIONS AT LOVE FIELD

EMAIL 214670LOVE@DALLASCITYHALL.COM  
 PHONE 214-670-LOVE (5683)

For questions or concerns please  
 contact:

Courtenay Shorter  
 Aircraft Noise Coordinator  
 City of Dallas-Department of  
 Aviation  
 Phone: 214-670-6673

