



**Community
Weekly Update
for
November 9-
November 15,
2013**

A Love Note from Me to You...

Dear Neighbors,

The Dallas Mavericks will have one home game this week on Tuesday November 12th. Please be advised that there could be an increase in general aviation traffic due to this game.

In order to satisfy the Federal Aviation Administration (FAA) exercise requirements, Dallas Love Field (DAL) will be hosting and participating in a Full Scale Exercise on Saturday, November 9th from 10 am until approximately 3 pm. The exercise will evaluate the airport's ability to respond to an airplane down and the resulting Mass Casualty Incident.

The exercise will include a trainer that is designed to simulate a burning aircraft which will allow our Aircraft Rescue Firefighters (ARFF) to continue to enhance their life-saving skills. We will have approximately 100 emergency responders participating from various agencies. During the exercise, RWY 13L/31R (Lemmon) will be closed.

Please do not be alarmed if you should see emergency equipment on this date and time. The exercise location is at the south end of the airport and our responders will be entering the exercise site from multiple locations. If you have questions about the exercise, you may contact me or the Emergency Management Coordinator Mrs. Lanita Magee at 214-670-6454.

In an effort to serve you better, Dallas Love Field has opened a new Airport Communication Center (ACC) for your use. The ACC is currently staffed from 5am to 11pm to answer and direct your airport related concerns. Between the hours of 11pm and 5am, all calls will be transferred to the Airport Operations Communication Center. As many of you know, in addition to submitting noise concerns online or directly to me, we also have a noise hotline number. The current noise hotline number will eventually be replaced with the ACC number, 214-670-**LOVE** (5683) so please spread the information to your neighbors and friends!

We are excited about the progress and changes that are taking place here at Dallas Love Field and we want you to be excited as well! If you are interested in some area that we are currently monitoring for our quarterly meetings of the LFEAC or if you have some particular interest in a time frame to be monitored, please let me know and I will try to accommodate that suggestion.

-Ms. Courtenay Shorter

Contents

Construction Updates	Pg.2
Runway Closures	Pg.2
Airport Diagram	Pg.3
Airport Operations Report	Pg.4 & 5

Want to get involved?

The Love Field Environmental Advisory Committee (LFEAC) meets once every quarter. Please join us for round-table discussion and updates!!!

Upcoming LFEAC Meetings:

- ♦ January 9, 2014
- ♦ April 10, 2014
- ♦ June 12, 2014

Environmental Tip

The Texas Recycle Day for the city of Dallas will be Friday November 15th. If you have items to shred or used cooking oil for disposal, please visit Southwest Center Mall located at 3663 W. Camp Wisdom Rd or Gecko Hardware located at 10233 East N.W. Highway on November 15th between the hours of 10:00am and 2:00pm to drop off items. You may also bring gently used coats and blankets for donation to locations above. Please visit www.dontwastetoday.com for more information and details.



Construction Activities

Runway Safety Area (RSA)

The Runway Safety Area (RSA) project has now been completed.

Work continues on taxiways A, B, and D. As work continues along these taxiways, there will be some limitations on the access to the approach ends of RWY 13L/31R (Lemmon).

Taxiway D between Taxiway C and Taxiway P was closed Tuesday May 28, 2013 as work continues for the next phase of the Love Field Modernization Project (LFMP).

This phase of the project is expected to be completed in Spring of 2014 and it includes the demolition of Gates 4 through 15 of the west concourse and the baggage claim wing.

If you would like to learn more about the LFMP please visit:

http://www.dallas-lovefield.com/pdf/LFMP_Newsletter_0412.pdf



Runway Closures

Scheduled Runway Closures for Routine Maintenance

RWY 13L/31R (Lemmon) will be closed Saturday November 9, 2013 from 7:00am until 5:00pm for airport emergency exercise.



Ongoing Airfield Closures

- ◆ RWY 18/36 closed, available for taxiing.
- ◆ TWY A closed between 460ft west of TWY A1 and 260ft west of TWY A2.
- ◆ TWY D closed from TWY P to TWY C until March 2014.
- ◆ TWY A closed between TWY A1 and the approach end of 31R for 4 months
- ◆ ***The following taxiways will remain closed until further notice:***
 - TWY A closed from TWY D to the approach end of RWY 13L.

-TWY A closed 150ft SE at approach end of RWY 31R.

-TWY C between C2 and D closed to aircraft with wingspan more than 118ft.

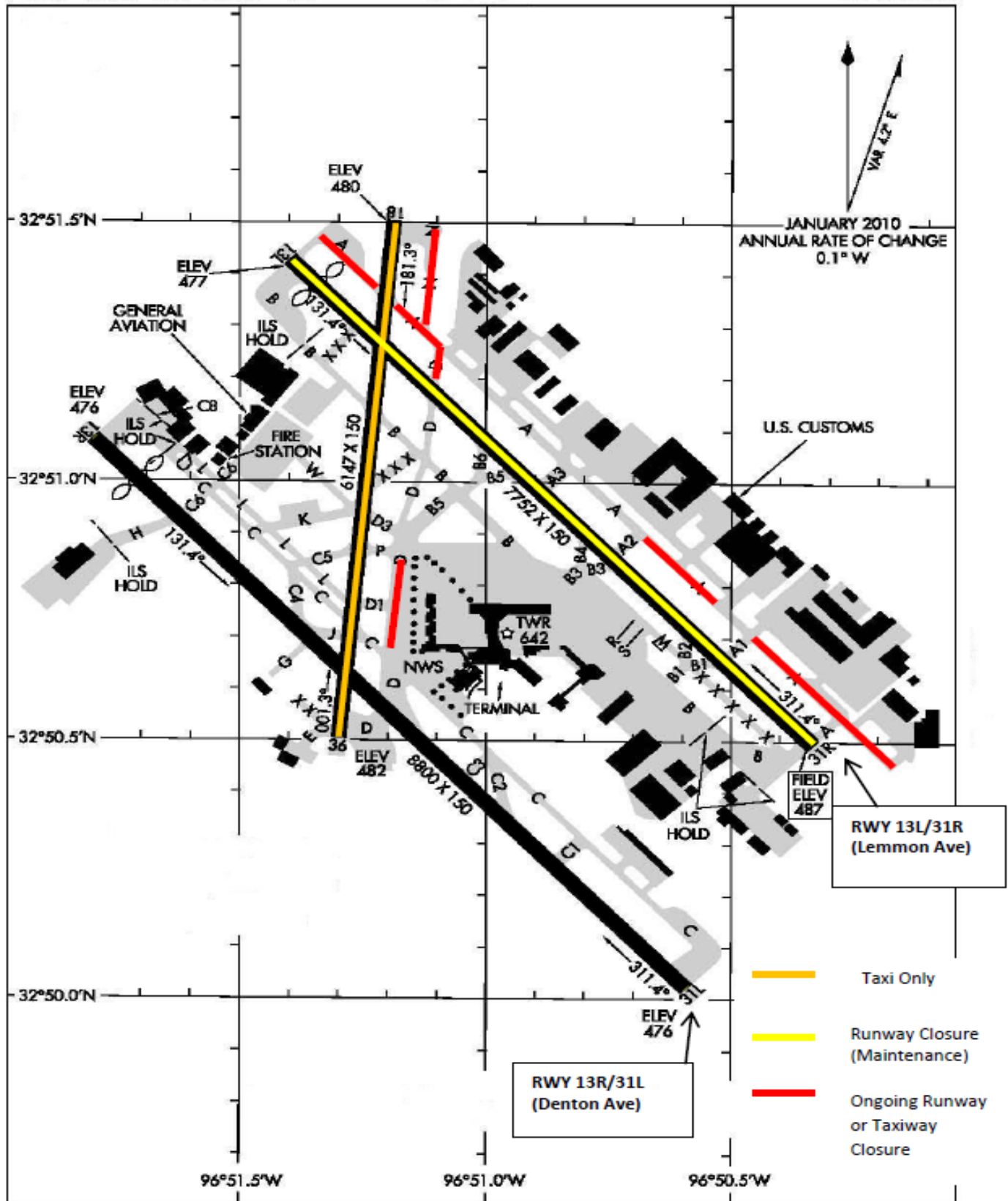
-TWY D closed between RWY 13L/31R to TWY A.

-TWY N closed.

**Please see the airport diagram on the next page for the locations of runways and taxiways.*

AIRPORT DIAGRAM

DALLAS-LOVE FIELD (DAL)
DALLAS, TEXAS



AIRPORT DIAGRAM

DALLAS, TEXAS
DALLAS-LOVE FIELD (DAL)

Airport Operations Report

Total Operations for the Week of **October 27– November 2, 2013**

13L / 31R (Lemmon)

13R / 31L (Denton)

October 27–November 2	Total	Avg per Day		Total	Avg per Day
Arrivals	996	142		Arrivals	70
Commercial	467	67		Commercial	42
GA	328	47		GA	21
Other**	201	29		Other**	6
Departures	545	78		Departures	59
Commercial	199	28		Commercial	39
GA	198	28		GA	13
Other**	148	21		Other**	6

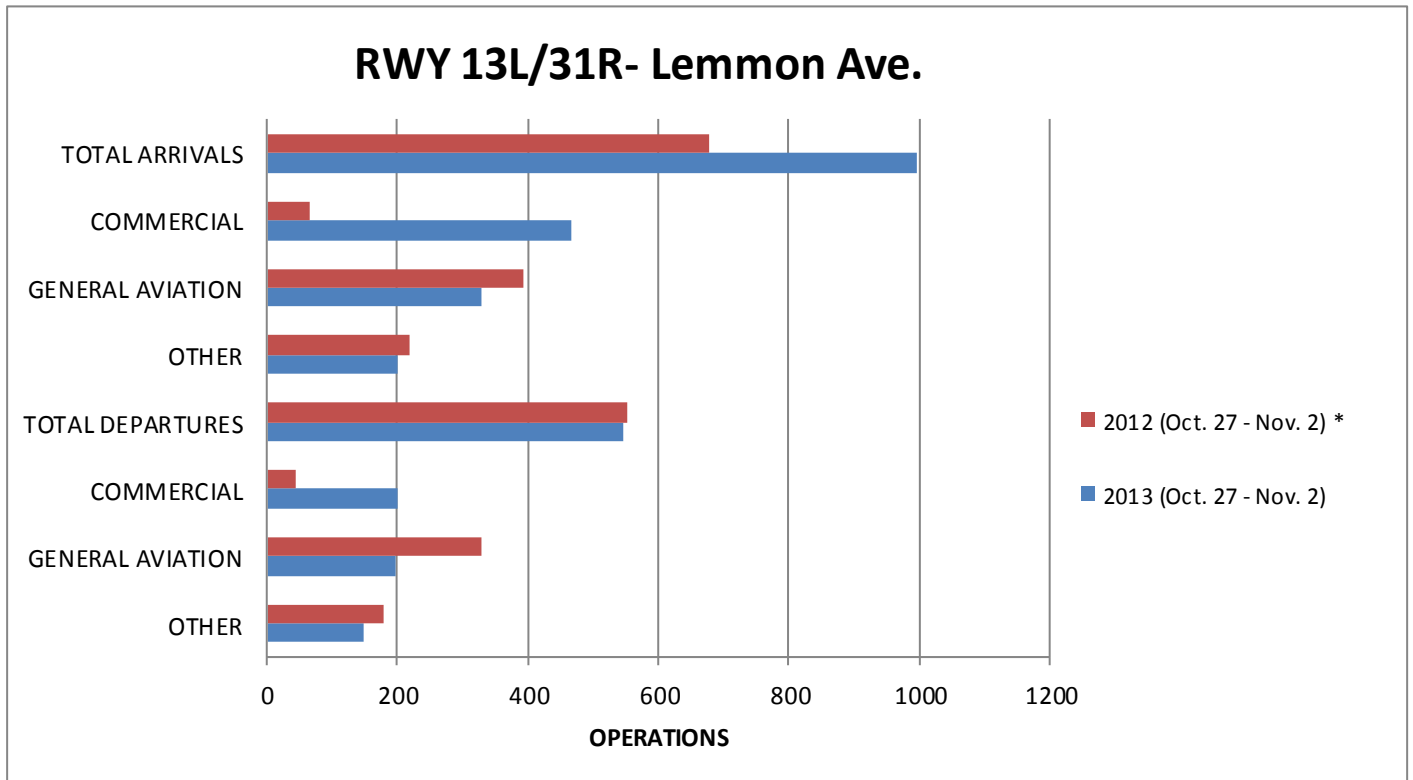
Total Arrivals for the week of October 27– November 2, 2013: 1508*

Total Departures for the week of October 27– November 2, 2013: 1559*

**Total arrival and departure counts include operations that are listed as “unknown” in the system due to radar coverage that doesn't correlate them with a runway in the Noise and Operations Monitoring System.*

***Aircraft classified as other include military operations, non-scheduled commercial operations such as charter flights/air taxi, and helicopter operations.*

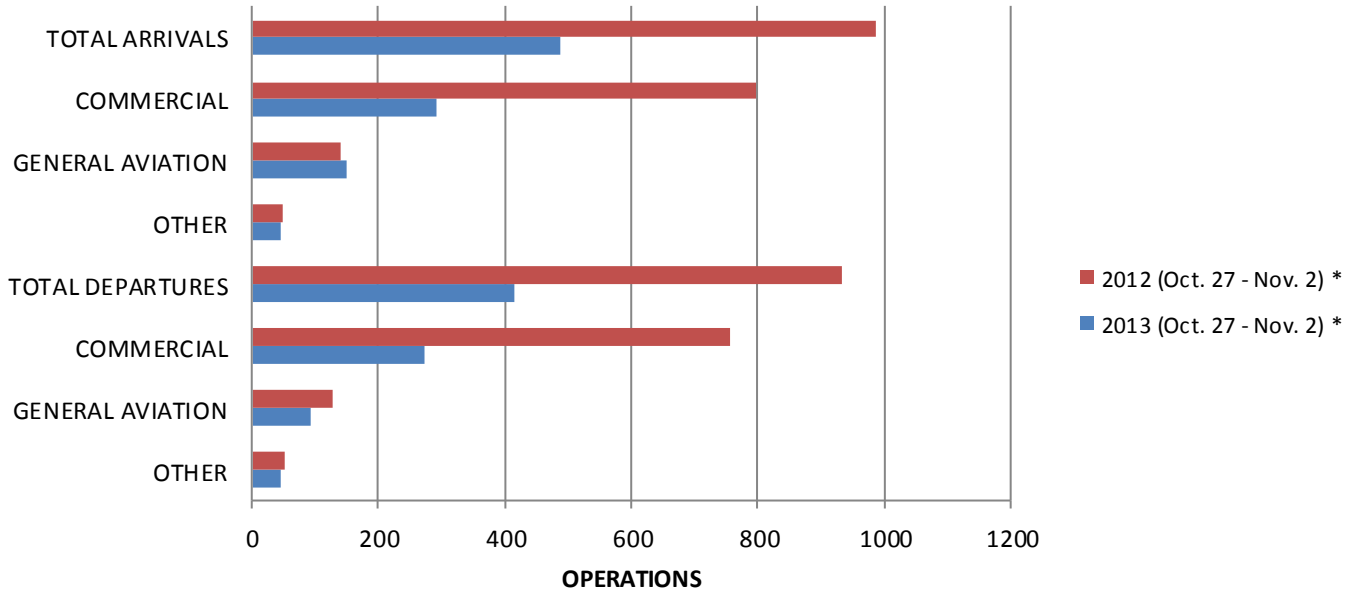
Annual Comparison



*** RWY 13L/31R (Lemmon) was closed Saturday October 27, 2012 from 8:00am until 2:00pm.**

Airport Operations Report (Continued)

RWY 13R/31L- Denton Rd.



* RWY 13R/31L (Denton) was closed Thursday November 1, 2012 at 10:00pm until Friday November 2, 2012 at 5:00am.

* RWY 13R/31L (Denton) was closed between the hours of 11:00pm to 5:00am nightly from Sunday October 27, 2013 through Thursday October 31, 2013.

Community Weekly Update
November 9– November 15, 2013

Visit us at
www.dallas-lovefield.com/



DALLAS LOVE FIELD
**AIRPORT
 COMMUNICATION
 CENTER**

ANSWERING ALL YOUR
 QUESTIONS AT LOVE FIELD

EMAIL 214670LOVE@DALLASCITYHALL.COM
 PHONE 214-670-LOVE (5683)

For questions or concerns please
 contact:

Courtenay Shorter
 Aircraft Noise Coordinator
 City of Dallas-Department of
 Aviation
 Phone: 214-670-6673

