



Community Weekly Update for October 5-October 11, 2013

A Love Note from Me to You...

Dear Neighbors,

Please save the date for the next LFEAC meeting on October 10, 2013 at 6pm in the Department of Aviation Administration building in Conference Room B. The physical address is 7610 Aviation Place Dallas, Texas 75235.

The Dallas Stars will have one home game this week on Saturday October 5, 2013. The Dallas Mavericks will also have their first preseason home game on Monday October 7, 2013. Please be advised that there could be an increase in general aviation traffic due to these games.



"Luminaria" by artists Diana Goldberg and Julie Cohn . The art piece shown above is located in the garden area of the main terminal entrance.

In an effort to serve you better, Dallas Love Field has opened a new Airport Communication Center (ACC) for your use. The ACC is currently staffed from 5am to 11pm to answer and direct your airport related concerns. Between the hours of 11pm and 5am, all calls will be transferred to the Airport Operations Communication Center. As many of you know, in addition to submitting noise concerns online or directly to me, we also have a noise hotline number. The current noise hotline number will eventually be replaced with the ACC number, 214-670-**LOVE** (5683) so please spread the information to your neighbors and friends!

We are excited about the progress and changes that are taking place here at Dallas Love Field and we want you to be excited as well! If you are interested in some area that we are currently monitoring for our quarterly meetings of the LFEAC or if you have some particular interest in a time frame to be monitored, please let me know and I will try to accommodate that suggestion.

-Ms. Courtenay Shorter

Contents

Construction Updates	Pg.2
Runway Closures	Pg.2
Airport Diagram	Pg.3
Airport Operations Report	Pg.4 & 5

Want to get involved?

The Love Field Environmental Advisory Committee (LFEAC) meets once every quarter. Please join us for round-table discussion and updates!!!

Upcoming LFEAC Meetings:

- ◆ **October 10, 2013**
- ◆ January 9, 2014
- ◆ April 10, 2014

Construction Activities

Runway Safety Area (RSA)

The Runway Safety Area (RSA) project has now been completed.

Work continues on taxiways A, B, and D. As work continues along these taxiways, there will be some limitations on the access to the approach ends of RWY 13L/31R (Lemmon).

Taxiway D between Taxiway C and Taxiway P was closed Tuesday May 28, 2013 as work continues for the next phase of the Love Field Modernization Project (LFMP).

This phase of the project is expected to be completed in Spring of 2014 and it includes the demolition of Gates 4 through 15 of the west concourse and the baggage claim wing.

If you would like to learn more about the LFMP please visit:



http://www.dallas-lovefield.com/pdf/LFMP_Newsletter_0412.pdf

Weather Alerts

There is a chance for thunderstorms in the area this weekend. Please be advised that this could cause later than normal or increased air traffic in the area due to delays or diversions.

Runway Closures

Scheduled Runway Closures for Routine Maintenance

- ◆ RWY 13L/31R (Lemmon) expected to be closed Friday, October 4, 2013 at 9:30pm for at least three hours.
- ◆ RWY 13R/31L (Denton) expected to be closed Saturday October 5, 2013 from 1:00pm to 3:00pm.
- ◆ RWY 13L/31R (Lemmon) expected to be closed Sunday October 6, 2013 from 7:00am to 10:00am.

Ongoing Airfield Closures

- ◆ Taxiway B1 will be closed Friday, October 4, 2013 at 9:30pm for at least three hours.
- ◆ Taxiway B3 will be closed Friday, October 4, 2013 at 9:30pm for at least three hours.
- ◆ RWY 18/36 closed, available for taxiing.
- ◆ TWY A closed between 460ft west of TWY A1 and 260ft west of TWY A2.
- ◆ TWY D closed from TWY P to TWY C until March 2014.
- ◆ TWY A closed between TWY A1 and the approach end of 31R for 4 months
- ◆ **The following taxiways will remain closed until further notice:**

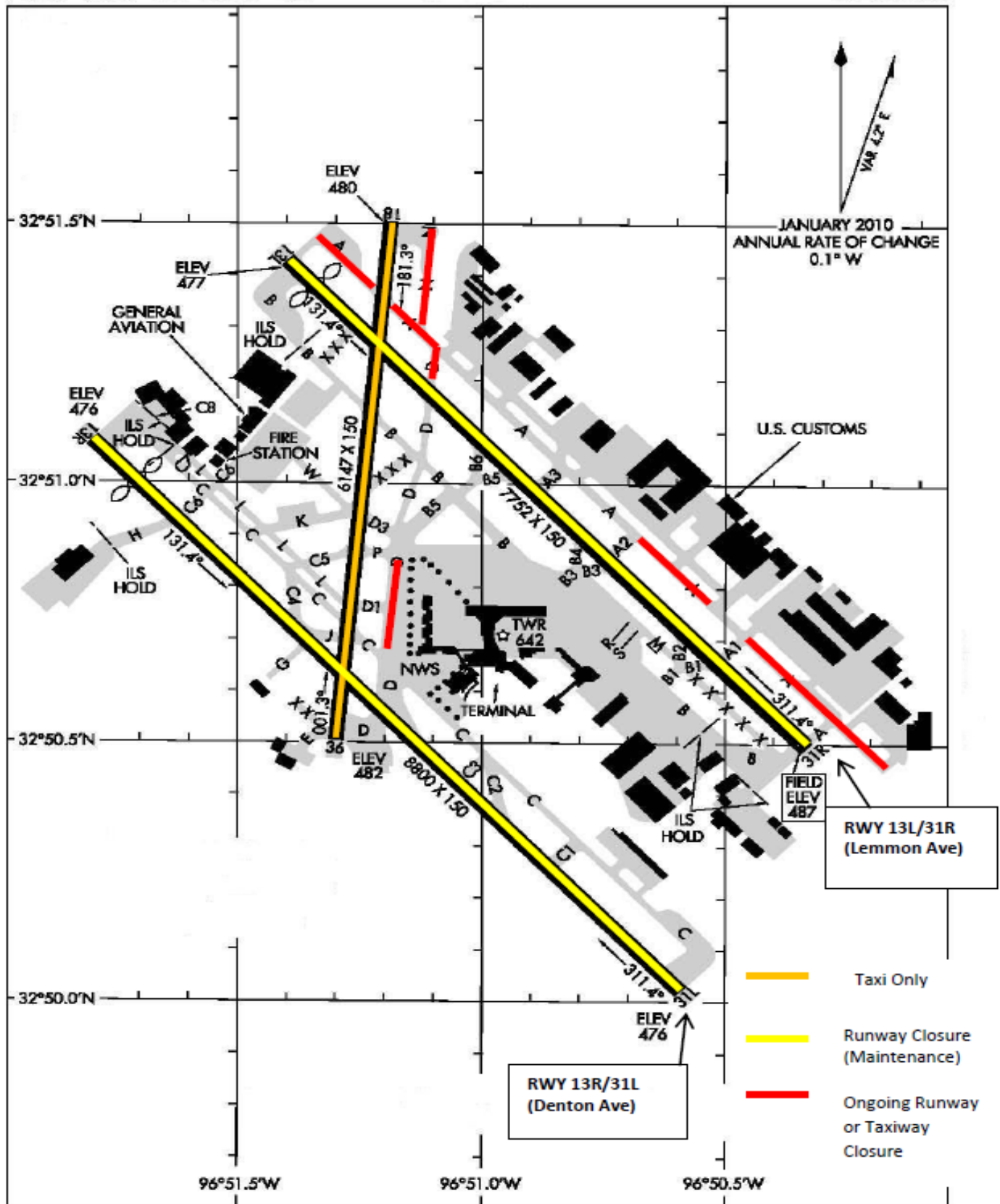


- TWY A closed from TWY D to the approach end of RWY 13L.
- TWY A closed 150ft SE at approach end of RWY 31R.
- TWY C between C2 and D closed to aircraft with wingspan more than 118ft.
- TWY D closed between RWY 13L/31R to TWY A.
- TWY D1 closed.
- TWY N closed.

**Please see the airport diagram on the next page for the locations of runways and taxiways.*

AIRPORT DIAGRAM

DALLAS-LOVE FIELD (DAL)
DALLAS, TEXAS



AIRPORT DIAGRAM

DALLAS, TEXAS
DALLAS-LOVE FIELD (DAL)

Airport Operations Report

Total Operations for the Week of September 22– September 28, 2013

13L / 31R (Lemmon)

13R / 31L (Denton)

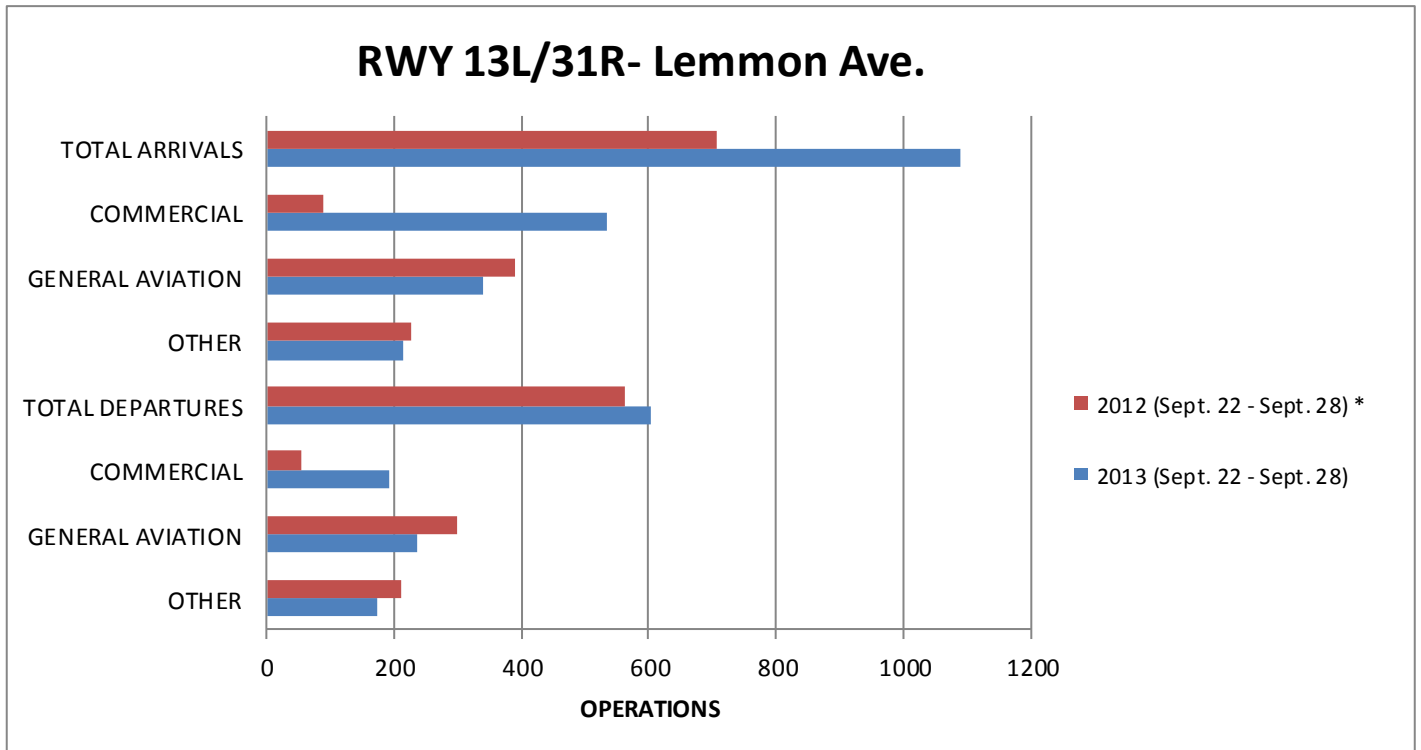
September 22– September 28	Total	Avg per Day		Total	Avg per Day
Arrivals	1089	156		Arrivals	526
Commercial	533	76		Commercial	309
GA	341	49		GA	150
Other	215	31		Other	66
Departures	604	86		Departures	480
Commercial	193	28		Commercial	339
GA	236	34		GA	99
Other	175	25		Other	42

Total Arrivals for the week of September 22– September 28, 2013: 1773*

Total Departures for the week of September 22– September 28, 2013: 1861*

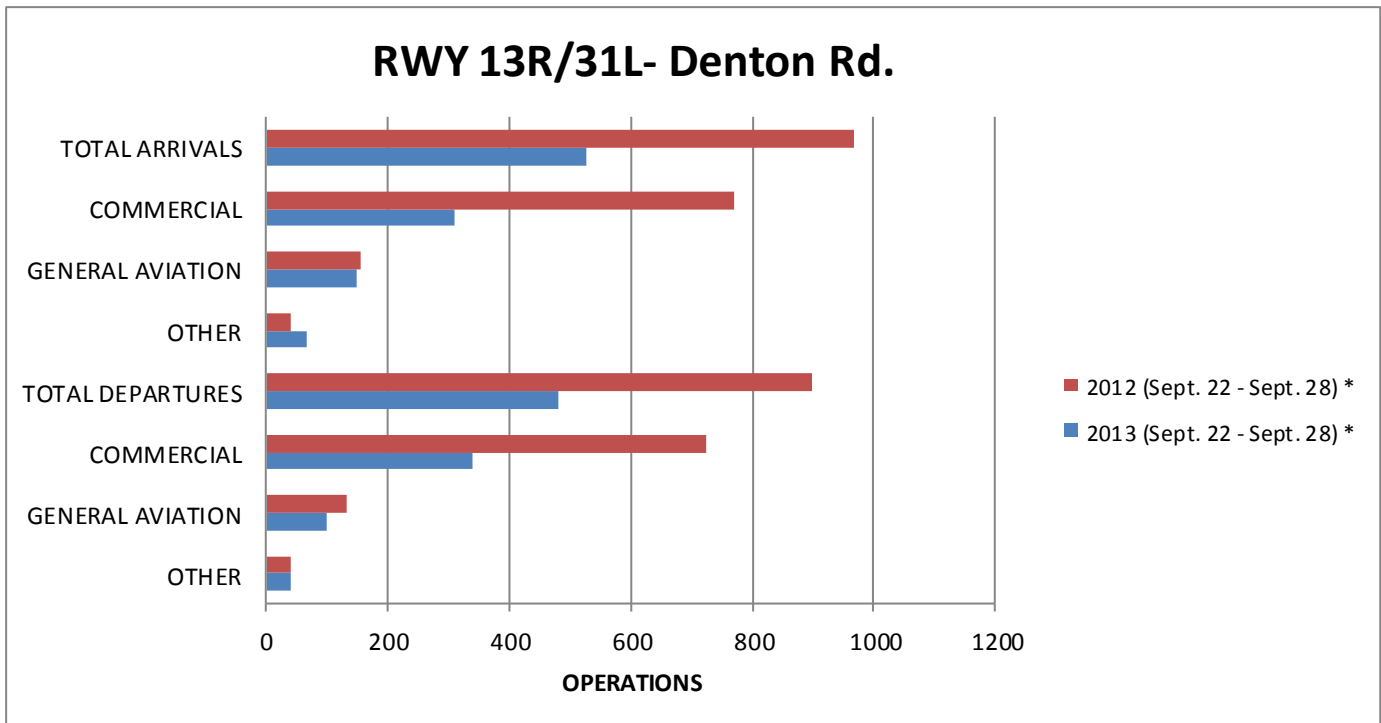
**Total arrival and departure counts include operations that are listed as “unknown” in the system due to radar coverage that doesn't correlate them with a runway in the Noise and Operations Monitoring System.*

Annual Comparison



*** Runway 13L/31R (Lemmon) was closed Thursday September 27, 2012 at 10pm until Friday September 28, 2012 at 1am**

Airport Operations Report (Continued)



* Runway 13R/31L (Denton) was closed Friday September 28, 2012 from 1am to 4am

* Runway 13R/31L (Denton) was closed Sunday September 22, 2013 at 11pm until Monday September 23, 2013 at 5:30am

Community Weekly Update
October 5- October 11, 2013

Visit us at
www.dallas-lovefield.com/



DALLAS LOVE FIELD
**AIRPORT
 COMMUNICATION
 CENTER**

ANSWERING ALL YOUR
 QUESTIONS AT LOVE FIELD

EMAIL 214670LOVE@DALLASCITYHALL.COM
 PHONE 214-670-LOVE (5683)

For questions or concerns please
 contact:

Courtenay Shorter
 Aircraft Noise Coordinator
 City of Dallas-Department of
 Aviation
 Phone: 214-670-6673

