



**Community
Weekly Update
for
August 31-
September 6,
2013**

A Love Note from Me to You...

Dear Neighbors,

In an effort to serve you better, Dallas Love Field has opened a new Airport Communication Center (ACC) for your use. The ACC is currently staffed from 5am to 11pm to answer and direct your airport related concerns. Between the hours of 11pm and 5am, all calls will be transferred to the Airport Operations Communication Center. As many of you know, in addition to submitting noise concerns online or directly to me, we also have a noise hotline number. The current noise hotline number will eventually be replaced with the ACC number, 214-670-**LOVE** (5683) so please spread the information to your neighbors and friends!

We are excited about the progress and changes that are taking place here at Dallas Love Field and we want you to be excited as well! If you are interested in some area that we are currently monitoring for our quarterly meetings of the LFEAC or if you have some particular interest in a time frame to be monitored, please let me know and I will try to accommodate that suggestion.

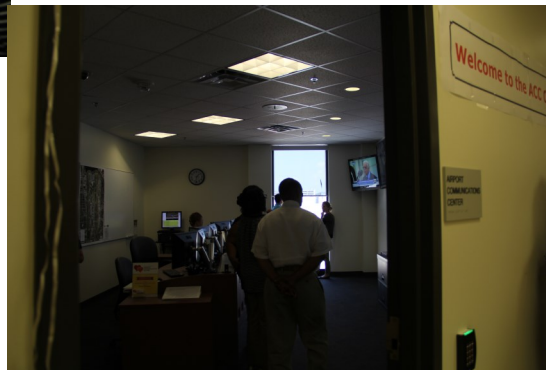
-Ms. Courtenay Shorter

Contents

Construction Updates	Pg.2
Runway Closures	Pg.2
Airport Diagram	Pg.3
Airport Operations Report	Pg.4 & 5

Want to get involved?

The Love Field Environmental Advisory Committee (LFEAC) meets once every quarter. Please join us for round-table discussion and updates!!!



Dallas Love Field's new Airport Communications Center (ACC). Open daily from 5am to 11pm.

For airport related questions or concerns please speak to one of the friendly customer service representatives at 214-670-LOVE(5683)

Upcoming LFEAC Meetings:

- ◆ October 10, 2013
- ◆ January 9, 2014
- ◆ April 10, 2014

Construction Activities

Runway Safety Area (RSA)

The Runway Safety Area (RSA) project has now been completed.

Work continues on taxiways A, B, and D. As work continues along these taxiways, there will be some limitations on the access to the approach ends of RWY 13L/31R (Lemmon).

Taxiway D between Taxiway C and Taxiway P was closed Tuesday May 28, 2013 as work continues for the next phase of the Love Field Modernization Project (LFMP).

This phase of the project is expected to be completed in Spring of 2014 and it includes the demolition of Gates 4 through 15 of the west concourse and the baggage claim wing.

If you would like to learn more about the LFMP please visit:



http://www.dallas-lovefield.com/pdf/LFMP_Newsletter_0412.pdf

Runway Closures

Scheduled Runway Closures for Routine Maintenance

Runway 13R/31L (Denton) will be closed Saturday September 7, 2013 from 7:00am until 3:00pm

Ongoing Airfield Closures

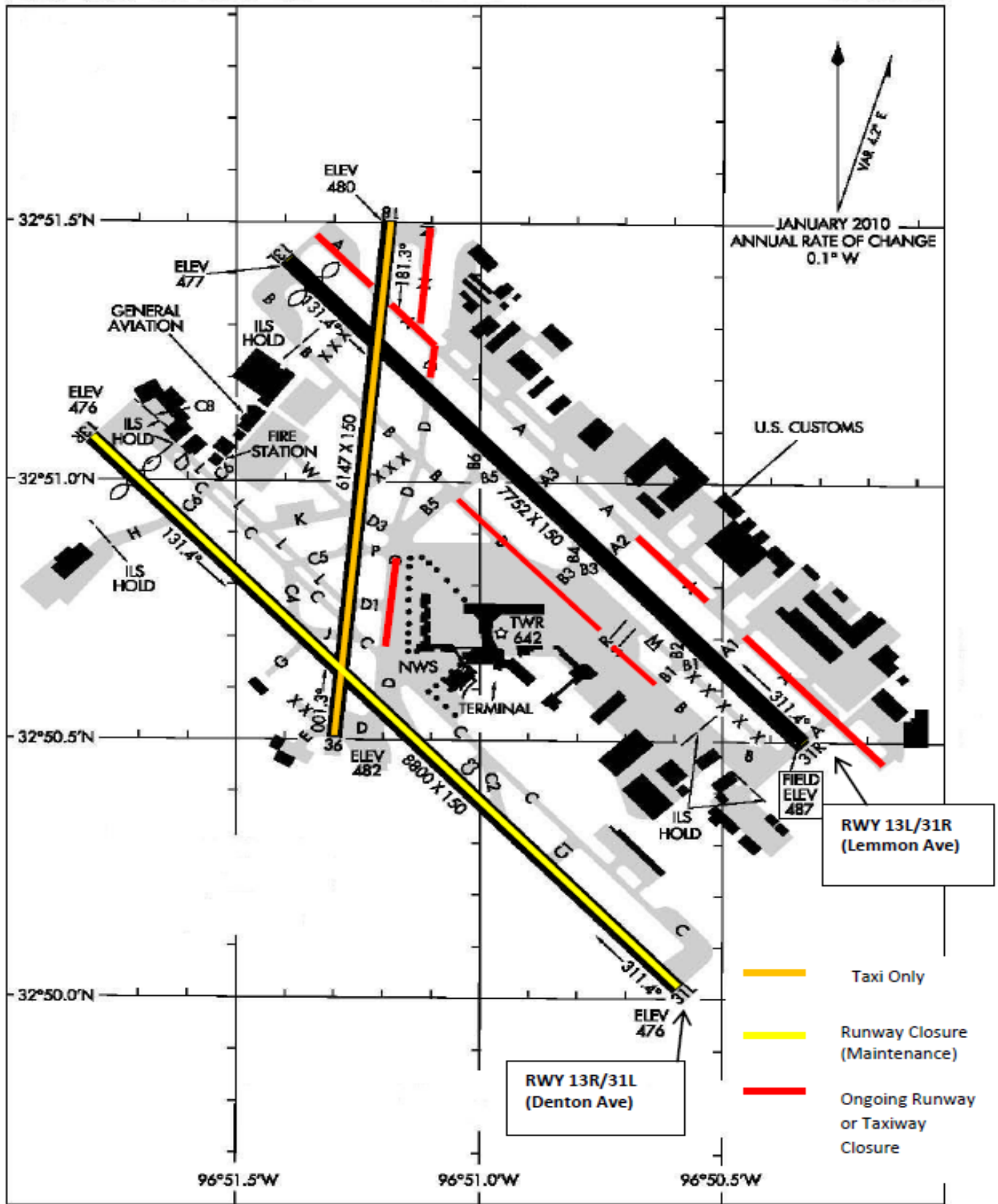
- ◆ RWY 18/36 closed, available for taxiing.
- ◆ TWY A closed between 460ft west of TWY A1 and 260ft west of TWY A2.
- ◆ TWY D closed from TWY P to TWY C until March 2014.
- ◆ TWY A closed between TWY A1 and the approach end of 31R for 4 months
- ◆ **The following taxiways will remain closed until further notice:**
 - TWY A closed from TWY D to the approach end of RWY 13L.
 - TWY A closed 150ft SE at approach end of RWY 31R.
 - TWY C between C2 and D closed to aircraft with wingspan more than 118ft.
 - TWY D closed between RWY 13L/31R to TWY A.
 - TWY D1 closed.
 - TWY N closed.



****Please see the airport diagram on the next page for the locations of runways and taxiways.***

AIRPORT DIAGRAM

DALLAS-LOVE FIELD (DAL)
DALLAS, TEXAS



AIRPORT DIAGRAM

DALLAS, TEXAS
DALLAS-LOVE FIELD (DAL)

Airport Operations Report

Total Operations for the Week of August 25– August 31, 2013

13L / 31R (Lemmon)

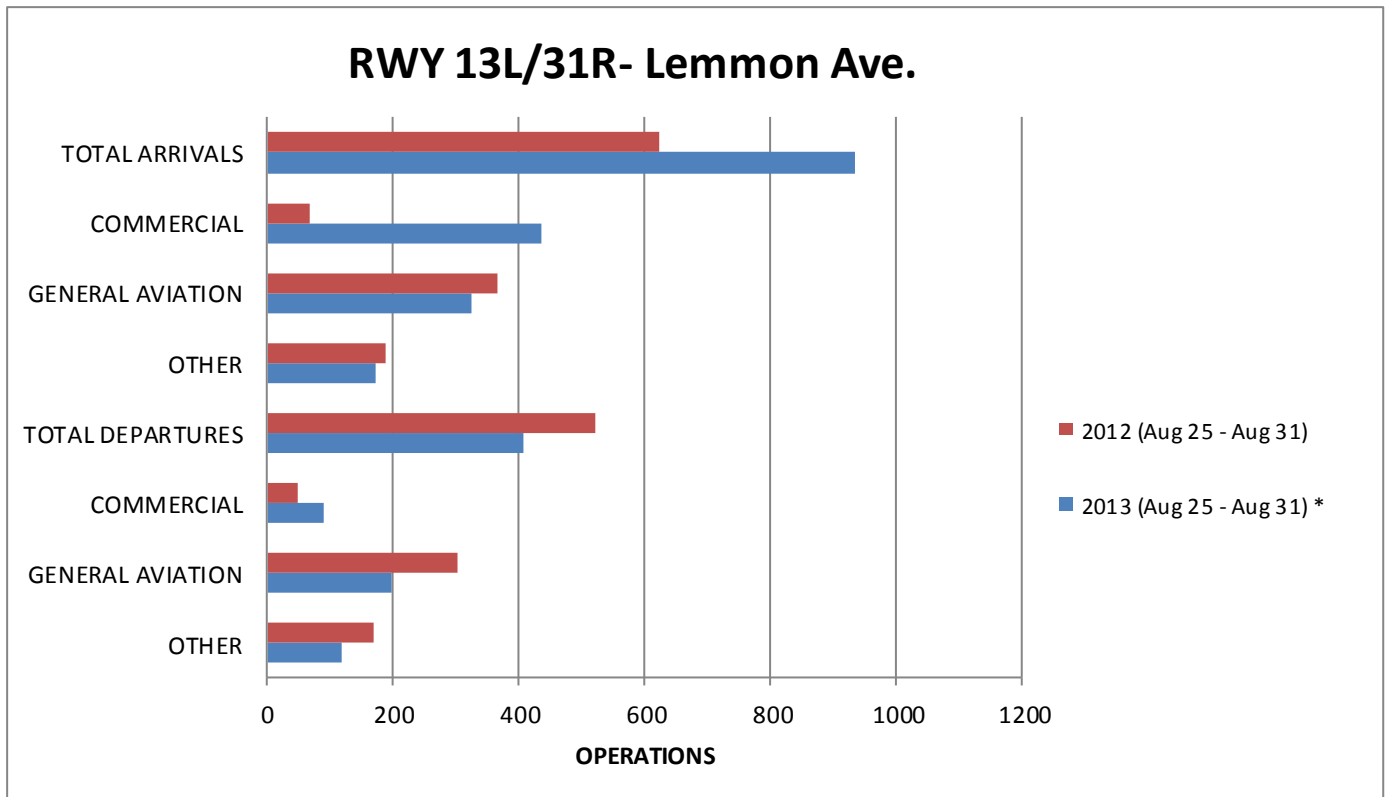
13R / 31L (Denton)

August 25–August 31	Total	Avg per Day		Total	Avg per Day	
Arrivals	932	133		Arrivals	546	78
Commercial	435	62		Commercial	328	47
GA	326	47		GA	153	22
Other	171	24		Other	65	9
Departures	407	58		Departures	504	72
Commercial	90	13		Commercial	348	50
GA	199	28		GA	94	13
Other	118	17		Other	61	9

Total Arrivals for the week of August 25– August 31, 2013: 1620* Total Departures for the week of August 25- August 31, 2013: 1696*

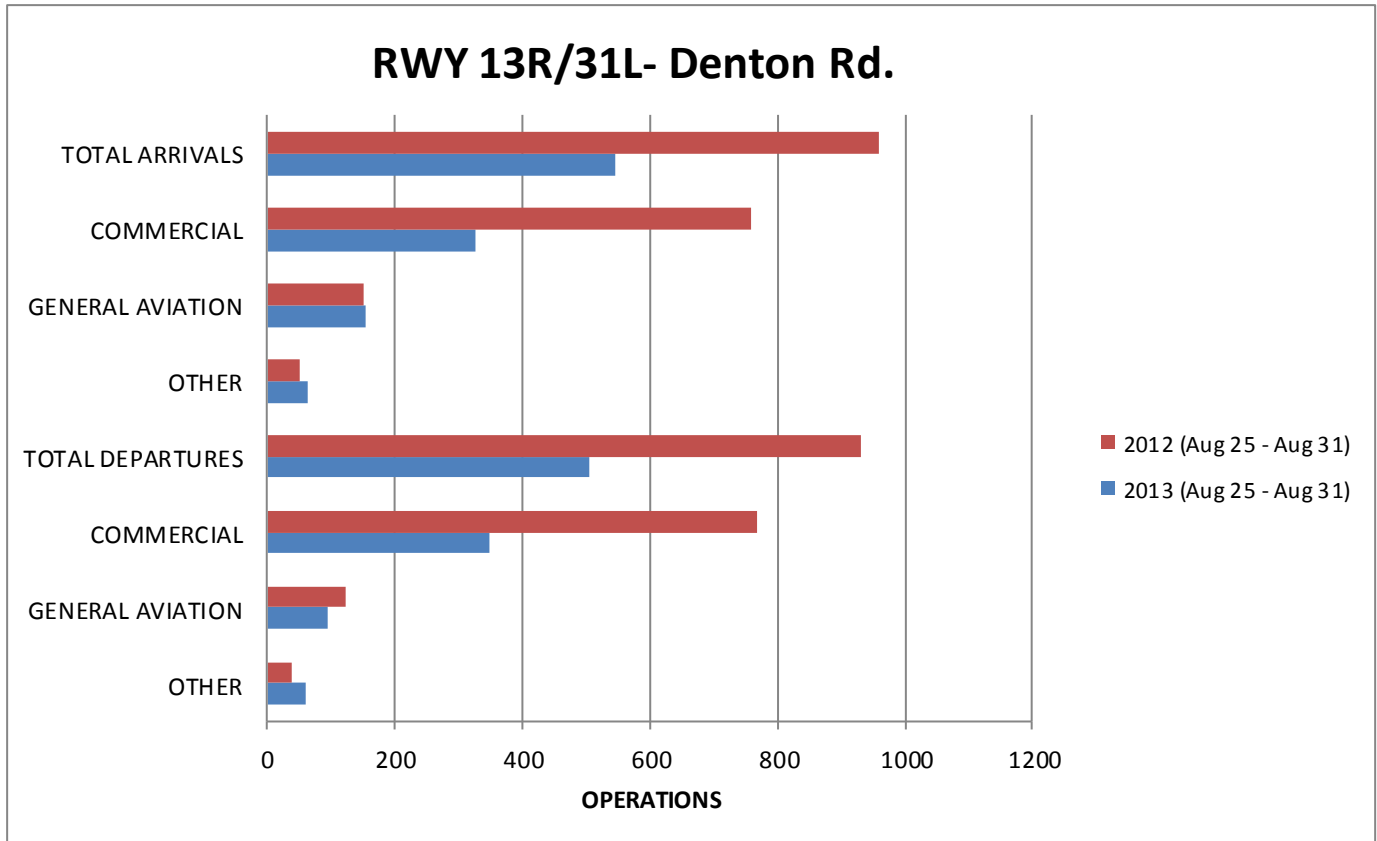
*Total arrival and departure counts include operations that are listed as “unknown” in the system due to radar coverage that doesn't correlate them with a runway in the Noise and Operations Monitoring System.

Annual Comparison



* Runway 13L/31R (Lemmon) was closed Saturday August 31, 2013 from 7:00 AM to 3:00 PM

Airport Operations Report (Continued)



Community Weekly Update
September 7- September 13, 2013

Visit us at
www.dallas-lovefield.com/



DALLAS LOVE FIELD
**AIRPORT
 COMMUNICATION
 CENTER**

ANSWERING ALL YOUR
 QUESTIONS AT LOVE FIELD

EMAIL 214670LOVE@DALLASCITYHALL.COM
 PHONE 214-670-LOVE (5683)

For questions or concerns please
 contact:

Courtenay Shorter
 Aircraft Noise Coordinator
 City of Dallas-Department of
 Aviation
 Phone: 214-670-6673

